

March • April • May

Quarter Notes

WCPE Radio, The Classical Station • Spring 2020



Cinema Classics

Spring Membership Drive

In the Gardens of Spain

Back to the Baroque

Primarily Piano

table of contents

WCPE Daily Schedule

Weekdays	
12:00 midnight	<i>Sleepers, Awake!</i> with Sherman Wallace
5:30 a.m.	<i>Rise and Shine</i> with Phil Davis Campbell
10:00 a.m.	<i>Classical Café</i> with Charles Holloway
9:00 a.m.–10:00 p.m.	Final Friday of each month: All-Request Friday
1:00 p.m.	<i>As You Like It</i> with Nick Robinson
4:00 p.m.	<i>Allegro</i> with Dick Storck
5:30 p.m.	5:30 waltz
7:00 p.m.	Mondays through Wednesdays and Fridays: WCPE Concert Hall with Andy Huber, Charles Holloway, Warner Hall, Larry Hedlund, Bruce Matheny, Christopher Scoville, Mark Schreiner, and a variety of volunteer hosts Thursdays: WCPE Opera House with Bob Chapman
8:00 p.m.	Mondays: Monday Night at the Symphony with Andy Huber, Charles Holloway, and a variety of hosts
10:00 p.m.	Music in the Night with Bob Chapman, Mike Huber, Bo Degnan, Claire Huene, Dave Stackowicz, Tony Waller, and a variety of hosts
Saturdays	
12:00 midnight	<i>Sleepers, Awake!</i> with Haydn Jones
6:00 a.m.	Weekend Classics with Lyle Adley-Warrick, Helen Halva, Peggy Powell, Joyce Kidd, and a variety of volunteer hosts
6:00 p.m.	Saturday Evening Request Program with Haydn Jones
Sundays	
12:00 midnight	<i>Sleepers, Awake!</i> with Michael Hugo
6:00 a.m.	Weekend Classics with Chuck Till and a variety of hosts
7:30 a.m.	Sing for Joy with Bruce Benson
8:00 a.m.	Great Sacred Music with Rob Kennedy
11:00 a.m.	Weekend Classics with Greysolynne Hyman, Helen Bowman, Claire Huene, Dan Poirier, Naomi Lambert, Bruce Huffine, and a variety of volunteer hosts
6:00 p.m.	Preview! with Steve Thebes, David Jeffrey Smith, and a variety of hosts
9:00 p.m.	Wavelengths with Ed Amend
10:00 p.m.	Peaceful Reflections with Ed Amend

Quarter Notes®

WCPE's member magazine
Vol. 42, no. 1

WCPE's mission is to expand the community of Classical music lovers by sharing Classical music with everyone, everywhere, at any time. We entertain, educate, and engage our audience with informative announcers, programs, and publications. We strive to make it easy to appreciate and enjoy Great Classical Music.

Editor: Christina Strobl Romano

Designer: Deborah Cruz

Printer: Chamblee Graphics

WCPE Staff

Deborah S. Proctor General Manager
& Chief Engineer

Phil Davis Campbell Network Broadcasting Director*

Bob Chapman *Opera House* Host

Gregg Cockroft Facilities Engineer

Adrienne DiFranco Accounting/Member Services

John Graham Director of Engineering

Charles Holloway Announcer and Producer

Michael Hugo Announcer

Haydn Jones Announcer

Rob Kennedy Social Media Director*;
Great Sacred Music host

Dan McHugh Director of Member Services*

Mary Moonen Business Support
and Traffic Manager

Susan Nunn Member Services;
Web Team Coordinator

Jane O'Connor Acting Volunteer Coordinator

Stu Pattison Data Services

Nan Pincus Music Library Assistant

Nick Robinson Announcer

Christina Strobl Romano Publications Editor

Dick Storck Network Operations Director*

Sherman Wallace Announcer

William Woltz Music Director*

*This staff member is also an announcer.

©Copyright 1978–2020, WCPE Radio, Raleigh, NC.

All rights reserved. All material disseminated by WCPE,

including compilations, is copyrighted or used under

application regulations.

Allegro; As You Like It; Classical Cafe; Quarter Notes; Rise

and Shine; Sleepers, Awake!; The Classical Station and *The*

Classical Station; and *WCPE* are registered or pending

trademarks or service marks of WCPE.

WCPE

P.O. Box 828

Wake Forest, NC 27588

800.556.5178

Membership: membership@theclassicalstation.org

Editor: christina_romano@theclassicalstation.org

Website: theclassicalstation.org



Meet Your Host: Phil Davis Campbell

How long have you been an announcer at WCPE? I bet you've seen lots of changes over the years. When I arrived at The Classical Station in 1992, we broadcast only in our local area in central North Carolina. We are now at 100,000 watts and broadcasting around the world via the web, satellite, and mobile app. It seems changes take place almost every day.

How did you get involved in broadcasting? While at college, I was a host at our small radio station. At only 5 watts, it was the start of the fire inside to pursue a broadcasting life. I went on to study radio and television at broadcasting school in Boston.

Do you have a background in music performance? By 6, I began to learn the piano and by 11 switched to the trumpet. I took part in many high school concerts and play productions; Classical Music was the main part of spring and winter concerts. Thanks to so many hours of practice, I was also in the Baltimore Colts Marching Band before the team left Baltimore.

Have you seen any concerts by different musicians around the world? Which ones stand out in your memory? I was able to travel to Italy and throughout Europe and was excited to see *Aida* at the Castel Sant'Angelo in Rome, Italy.

Is there anything else your listeners might enjoy knowing about you? Being the host of *Rise and Shine* at The Classical Station and our Classical Conundrum is such a joy and honor each day!

Meet Your Host	1
From the Editor	2
March Calendar	3
April Calendar	4
May Calendar	5
Spring Highlights.....	6
Mondays This Quarter	
<i>My Life in Music, Renaissance Fare</i>	8
<i>Monday Night at the Symphony</i>	9
Opera House	10
Sundays This Quarter	
<i>Great Sacred Music</i>	11
<i>Preview</i>	12
<i>Wavelengths, and</i>	
<i>Peaceful Reflections</i>	13
Program Listings	14
Thank-you Gifts.....	16
Lately We've Read	
<i>Mozart in Paris</i>	
<i>By Frantz Duchazeau</i>	28
WCPE Education	
Fund News	29
Primarily Piano Weekend	29
Classical Community.....	30
Classical Events and	
Promotional Partners	31
What You're Saying	32

On the cover:

Join us for Primarily Piano from May 9 to 10.

Photo of Lars Vogt copyright Neda Navaee.

Our founder and general manager, Deborah Proctor, likes to say that every member makes a difference in community radio—every single member is important. This spring, we ask our community of Great Classical Music lovers to remember what sets WCPE, The Classical Station, apart from other radio stations.

We don't just play Great Classical Music 24 hours a day, 7 days a week. You listen to us for the special programs that are unique to WCPE—Monday Night at the Symphony, Renaissance Fare, Opera House, and Great Sacred Music, to name a few. Every quarter we feature programming events and theme weekends, and we know how much you love our all-request programs on Fridays and Saturdays.

Every issue of *Quarter Notes* brings you programming highlights starting with pages 6 and 7. This spring, you'll enjoy a bonanza of events including Cinema Classics, In the Gardens of Spain, Back to the Baroque, and Primarily Piano! And, of course, keep an eye on the listings starting on page 14 for your favorite pieces.

Keep your subscription going by continuing to be a member of the Great Classical Music family! From March 20 through 29, we ask for your continued financial support during our Spring Membership Drive. We provide membership benefits like your subscription to *Quarter Notes* and a specially chosen selection of thank-you gifts, including logo gear as well as CDs and DVDs. See what we're offering this spring on pages 16 and 17.



You can decline a thank-you gift if you would rather divert 10 percent of your donation to the WCPE Education Fund, which awards grants to nonprofit organizations committed to music education in North Carolina. Read about what's new with this wonderful program on page 29.

Have you been to our website lately at TheClassicalStation.org? We stream online at the "Listen Now" link, and you can find exciting new content in Preview, Podcasts, and Conversations under *Features*. You can find us on the FM dial at 89.7 in central North Carolina, and because there is always a live host here, you can call us any time at 919.556.5178.

Christina

Christina Strobl Romano
Editor of *Quarter Notes*



Help The Classical Station get the Membership Drive off to a great start by encouraging others to match your donation of \$300 or more. For more information, please call **Member Services at 919.556.5178.**

1	Sunday	Frédéric Chopin 1810 Lorraine Hunt Lieberson 1954
2	Monday	Bedřich Smetana 1824 Celedonio Romero 1913
3	Tuesday	
4	Wednesday	Antonio Vivaldi 1678 Bernard Haitink 1929
5	Thursday	Arthur Foote 1853 Heitor Villa-Lobos 1887 Barry Tuckwell 1931 Richard Hickox 1948
6	Friday	<i>All-Request Friday</i> Lorin Maazel 1930 (90th anniversary of birth)
7	Saturday	Maurice Ravel 1875
8	Sunday	<i>Daylight Saving Time begins</i> CPE Bach 1714 Alan Hovhaness 1911 Pepe Romero 1944
9	Monday	Samuel Barber 1910 Thomas Schippers 1930
10	Tuesday	Pablo de Sarasate 1844 Charles Groves 1915
11	Wednesday	
12	Thursday	Thomas Arne 1710
13	Friday	<i>All-Request Friday</i>
14	Saturday	Georg Philipp Telemann 1681 Johann Strauss I 1804
15	Sunday	Eduard Strauss 1835
16	Monday	Roger Norrington 1934 Teresa Berganza 1935 (85th anniversary of birth) Claus Peter Flor 1953

cinema classics weekend

17	Tuesday	<i>St. Patrick's Day</i>
18	Wednesday	Nikolai Rimsky-Korsakov 1844 Nobuko Imai 1943 James Conlon 1950 (70th birthday)
19	Thursday	<i>Spring begins</i> Myung-Wha Chung 1944
20	Friday	<i>Spring Membership Drive</i> Sviatoslav Richter 1915
21	Saturday	J.S. Bach 1685 (335th anniversary of birth) Modest Mussorgsky 1839 Artur Grumiaux 1921 Erich Kunzel 1935 (85th anniversary of birth)
22	Sunday	Hamish MacCunn 1868
23	Monday	Franz Schreker 1878
24	Tuesday	Byron Janis 1928
25	Wednesday	Arturo Toscanini 1867 Béla Bartók 1881 Zdeněk Košler 1928
26	Thursday	Pierre Boulez 1925 (95th anniversary of birth) Kyung-Wha Chung 1948
27	Friday	Vincent d'Indy 1851 Ferde Grofé 1892 Mstislav Rostropovich 1927
28	Saturday	Rudolf Serkin 1903
29	Sunday	William Walton 1902 E. Power Biggs 1906
30	Monday	
31	Tuesday	Franz Josef Haydn 1732

april calendar

in the gardens of spain weekend	1	Wednesday <i>April Fools' Day</i>	Ferruccio Busoni 1866 Sergei Rachmaninoff 1873
	2	Thursday	Franz Lachner 1803
	3	Friday <i>All-Request Friday</i>	Mario Castelnuovo-Tedesco 1895 (125th anniversary of birth) Garrick Ohlsson 1948
	4	Saturday	Vladimir Jurowski 1972
	5	Sunday <i>Palm Sunday</i>	Louis Spohr 1784 Herbert von Karajan 1908
	6	Monday	André Previn 1929 Pascal Rogé 1951
	7	Tuesday	Robert Casadesus 1899 Leif Ove Andsnes 1970 (50th birthday)
	8	Wednesday <i>Passover begins at sunset</i>	Giuseppe Tartini 1692 Adrian Boult 1889
	9	Thursday	Antal Doráti 1906 Jerzy Maksymiuk 1936
	10	Friday <i>Good Friday/All-Request Friday</i>	Yefim Bronfman 1958
	11	Saturday	Jean-Joseph Mouret 1682 Alberto Ginastera 1916
	12	Sunday <i>Easter</i>	Josef Lanner 1801 Jean-François Paillard 1928 Montserrat Caballé 1933
	13	Monday	William Sterndale Bennett 1816 John & Richard Contiguglia 1937
	14	Tuesday	Paavo Berglund 1929 Julian Lloyd Webber 1951 Mikhail Pletnev 1957 Alisa Weilerstein 1982
	15	Wednesday	Neville Marriner 1924

back to the baroque weekend	16	Thursday	Federico Mompou 1893 Dennis Russell Davies 1944
	17	Friday <i>All-Request Friday</i>	Artur Schnabel 1882 Gregor Piatigorsky 1903 Adolphus Hailstork 1941 Cristina Ortiz 1950 (70th birthday)
	18	Saturday	Franz von Suppé 1819 Leopold Stokowski 1882 Jean Guillou 1930 (90th anniversary of birth)
	19	Sunday	Murray Perahia 1947 Yan Pascal Tortelier 1947
	20	Monday	John Eliot Gardiner 1943
	21	Tuesday	Randall Thompson 1899 Stanley Ritchie 1935 (85th birthday)
	22	Wednesday <i>Earth Day</i>	Giuseppe Torelli 1658 Ethel Smyth 1858 Yehudi Menuhin 1916 Jukka-Pekka Saraste 1956 Franz Welser-Möst 1960 (60th birthday)
	23	Thursday	Ruggiero Leoncavallo 1857
	24	Friday <i>All-Request Friday</i>	John Williams (guitarist) 1941
	25	Saturday	
	26	Sunday	
	27	Monday	Friedrich von Flotow 1812 Sergei Prokofiev 1891
	28	Tuesday	Yoav Talmi 1943
	29	Wednesday	Thomas Beecham 1879 Malcolm Sargent 1895 (125th anniversary of birth) Zubin Mehta 1936
	30	Thursday	Franz Lehár 1870 Robert Shaw 1916

primarily piano weekend	1	Friday <i>All-Request Friday</i>	Hugo Alfvén 1872 Walter Susskind 1913
	2	Saturday	Alessandro Scarlatti 1660 Hans Christian Lumbye 1810 Valery Gergiev 1953
	3	Sunday	Virgil Fox 1912
	4	Monday	Emil von Řežníček 1860 Gennadi Rozhdestvensky 1931 Enrique Bátiz 1942
	5	Tuesday <i>Cinco de Mayo</i>	Hans Pfitzner 1869 Agustín Barrios 1885 Cyprien Katsaris 1951
	6	Wednesday	
	7	Thursday	Johannes Brahms 1833 Peter Tchaikovsky 1840
	8	Friday <i>All-Request Friday</i>	Karl Stamitz 1745 (275th anniversary of birth) Louis Moreau Gottschalk 1829
	9	Saturday	Carlo Maria Giulini 1914
	10	Sunday <i>Mother's Day</i>	Jean-Marie Leclair 1697 Ani Kavafian 1948
	11	Monday	Anatol Liadov 1855 William Grant Still 1895 (125th anniversary of birth)
	12	Tuesday	Jules Massenet 1842 Gabriel Fauré 1845
	13	Wednesday	Arthur Sullivan 1842 Jane Glover 1949
	14	Thursday	Otto Klemperer 1885 Alan Marks 1949
	15	Friday <i>All-Request Friday</i>	Claudio Monteverdi 1567 Michael William Balfe 1808 Lars-Erik Larsson 1908 Anne Akiko Meyers 1970 (50th birthday)

memorial day weekend	16	Saturday <i>Armed Forces Day</i>	Andrew Litton 1959
	17	Sunday	Erik Satie 1866 Sándor Végh 1912 Dennis Brain 1921 Paul Crossley 1944
	18	Monday <i>Victoria Day, Canada</i>	Karl Goldmark 1830 Clifford Curzon 1907
	19	Tuesday	
	20	Wednesday	
	21	Thursday	Maurice André 1933 Heinz Holliger 1939
	22	Friday <i>All-Request Friday</i>	Richard Wagner 1813
	23	Saturday	Alicia de Larrocha 1923 John Browning 1933
	24	Sunday	Paul Paray 1886 Hans-Martin Linde 1930 (90th birthday)
	25	Monday <i>Memorial Day observed</i>	
	26	Tuesday	Vlado Perlemuter 1904
	27	Wednesday	Jacques Halévy 1799 Joachim Raff 1822
	28	Thursday	Dietrich Fischer-Dieskau 1925 (95th anniversary of birth)
	29	Friday <i>All-Request Friday</i>	Isaac Albéniz 1860 Erich Korngold 1897 Karl Münchinger 1915
	30	Saturday	Gustav Leonhardt 1928 Zoltán Kocsis 1952
31	Sunday	Marin Marais 1656 Louise Farrenc 1804	

By Nan Pincus

The Metropolitan Opera Saturdays through May 9

The Met continues with weekly live broadcasts from Lincoln Center, including a new production of Wagner's *The Flying Dutchman* (March 14) and Puccini's *Tosca* (April 11). The Met's Mary Jo Heath is your host.

Women's History Month March

From Hildegard von Bingen (born 1098) to Florence Price (born 1887) to María Huld Markan Sigfúsdóttir (born 1980) and her contemporaries, this March we will celebrate female composers of Classical music as well as ground-breaking performers. We'll have a special focus on today's composers during WCPE's Wavelengths, Sundays at 9:00 p.m. ET.



photo: Lijia Birgisdóttir

María Huld Markan Sigfúsdóttir featured during Women's History Month

Cinema Classics March 14–15

Filmmakers know that audiences respond to what they hear as well as what they see. The rich tradition of music in film comprises both Classical works included in beloved movies and music written specifically for films. With composers such as Max Steiner, Elmer Bernstein, Hans Zimmer, and John Williams, we've got the makings for a great weekend celebrating the music of the silver screen!

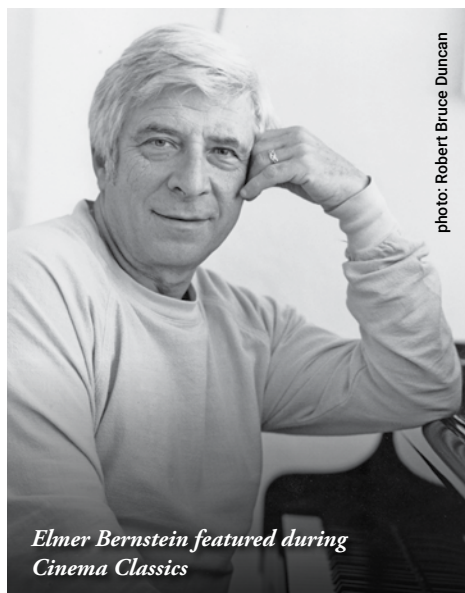


photo: Robert Bruce Duncan

Elmer Bernstein featured during Cinema Classics

Spring Membership Drive March 20–29

Your financial support helps WCPE share Great Classical Music with listeners everywhere. Make your gift at TheClassicalStation.org, or mail your silent pledge to WCPE Radio, PO Box 828, Wake Forest, NC 27588.

In the Gardens of Spain April 4–5

Spanish music invites us to enjoy the beauty of the Iberian landscape. Sunshine and bright colors, Moorish castles, passionate folk dances, and Classical guitar make a unique and memorable experience. With music of Tárrega, Rodrigo, de Falla, Albéniz, Granados, and more—we'll bring you a great weekend celebrating the music of Spain!

Passover April 8

WCPE airs a special program of music at 6:00 p.m. ET to mark the beginning of Passover at sunset this day.

Easter April 12

Celebrate with Rob Kennedy, host of Great Sacred Music, beginning at 8:00 a.m. ET.

Back to the Baroque April 18–19

During the time of the musical Baroque, from 1600–1750, Western music reached levels of harmonic complexity and instrumental virtuosity never known before. We'll explore this fascinating period through some of the best-known works by Bach, Handel, and Vivaldi, plus enchanting lesser-known pieces by Telemann, Albinoni, Purcell, Buxtehude, the Scarlatti family, and more.

Primarily Piano May 9–10

This weekend we'll feature the instrument so often described as an interlocutor, a lover, and a friend. We'll hear some of today's brightest and best players, including Igor Levitt, Víkingur Ólafsson, Lars Vogt, and Xiayin Wang, plus the established masters of the 20th century including Mitsuko Uchida, Maurizio Pollini, and Byron Janis.

Featured during Primarily Piano



photo: Gregor Hohenberg & Sony Classical

Leif Ove Andsnes



photo: Felix Broede

Igor Levitt



photo: Decca & Justin Pumfrey

Mitsuko Uchida



photo: Ari Magg

Víkingur Ólafsson

Memorial Day Weekend May 23–25

An extended weekend celebrating American composers and performers, with lots of patriotic music on Monday to honor the men and women who have given so much for our country.

All-Request Fridays and Saturday Evening Request Program

The Classical Station now gives you two weekly opportunities to ask for your Classical music favorites. Every Friday is now All-Request Friday, from 9:00 a.m. until 10:00 p.m., and the Saturday Evening Request Program continues every Saturday from 6:00 p.m. until midnight. Submit your advance requests at TheClassicalStation.org, or call WCPE at 919.556.0123.

mondays this quarter

My Life in music

First Mondays at 7:00 p.m.
Second Sundays at 5:00 p.m.
(All times Eastern)
With host Rob Kennedy

My Life in Music showcases professional musicians who share stories about their careers and their work. Interwoven with the conversations are musical selections which illustrate their talking points. Join us on the first Monday of each month at 7:00 p.m. Eastern and again the following Sunday at 5:00 p.m. This quarter our guests are artist manager Andrew Ousley, conductor Philip Cave, and baritone Sherrill Milnes.

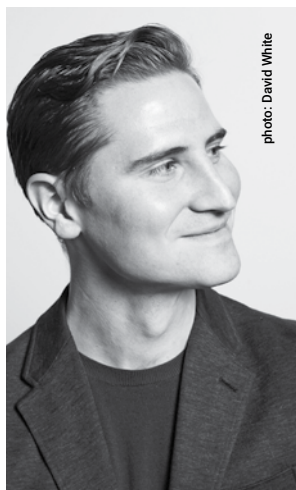


photo: David White

Andrew Ousley
Artist manager
March 2

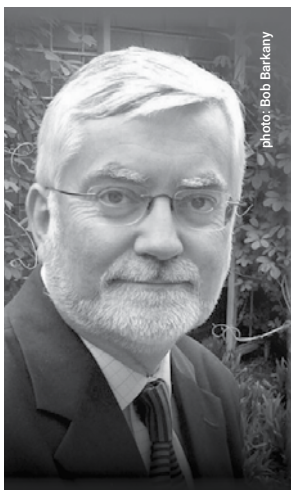


photo: Bob Barkany

Philip Cave
Conductor
April 6

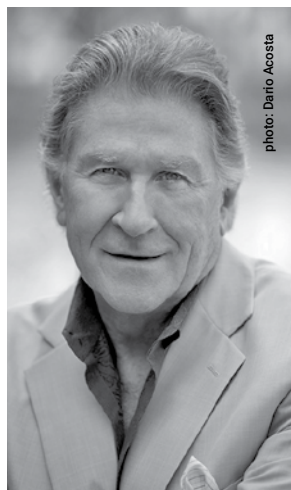


photo: Dario Acosta

Sherrill Milnes
Composer
May 4

mondays this quarter

Monday Night at the symphony

By William Woltz
Mondays at 8:00 p.m. (Eastern)

Every Monday on The Classical Station, we spend a couple of hours featuring a great orchestra in classic performances from our music library.

In the coming weeks, we'll hear from some of Europe's finest orchestras along with American favorites including the Atlanta Symphony Orchestra, Pittsburgh Symphony, Los Angeles Philharmonic, and, on Memorial Day, the St. Louis Symphony Orchestra.

Be sure to listen each week as we spotlight the world's best orchestras on Monday Night at the Symphony.

March

- 2 Bavarian Radio Symphony Orchestra
- 9 Royal Scottish National Orchestra
- 16 Stuttgart Radio Symphony Orchestra
- 23 Show your support during WCPE's Spring Membership Drive
- 30 Royal Concertgebouw Orchestra

April

- 6 Los Angeles Philharmonic
- 13 London Symphony Orchestra
- 20 Vienna Philharmonic Orchestra
- 27 Pittsburgh Symphony Orchestra

May

- 4 Atlanta Symphony Orchestra
- 11 Bamberg Symphony Orchestra
- 18 French National Orchestra
- 25 St. Louis Symphony Orchestra



photo: Dilip Vishwanat

St. Louis Symphony Orchestra

Renaissance Fare

Second Mondays at 7:00 p.m.
Third Sundays at 5:00 p.m.
(All times Eastern)
With host George Douglas

Renaissance Fare in March will concentrate on the music of the great kings! We'll hear recordings by Early Music New York, the Folger Consort, the Baltimore Consort, and

other popular groups playing music of the Renaissance period. Tune in Monday, March 9, at 7:00 p.m. for music of the royal courts of Europe. Listen for the repeat broadcast Sunday, May 15, at 5:00 p.m.

Renaissance Fare in April celebrates the beauty and hope of Easter time and spring. Join us for our April edition on Monday, April 13, at 7:00 p.m. Listen for the repeat broadcast on Sunday, April 19, at 5:00 p.m.

During Renaissance Fare in May we will surely be thinking, "Summer is a-coming." It's amazing how many great Renaissance

tunes there are about this most popular season of the year. We will play music that accompanies the traditional dancing around the May pole. Be sure to tune in on Monday, May 11, at 7:00 p.m. Also listen for the repeat broadcast on Sunday, May 17, at 5:00 p.m.

Listen to Renaissance Fare on the second Monday of each month at 7:00 p.m. on WCPE, TheClassicalStation.org, with a repeat broadcast on the following Sunday at 5:00 p.m.



photo: Teresa Wood

Folger Consort

W · C · P · E
OPERA HOUSE

Thursdays at 7:00 p.m. (Eastern)
 With host Bob Chapman

March 5 Massenet's *Don Quichotte* & Leigh's *Man of La Mancha*

Aging knight Quichotte (Ghiaurov) and his squire Sancho (Bacquier) woo the lovely Dulcinée (Crespin) in Massenet's 1895 opera. The 1965 Broadway version of Cervantes's classic novel features Domingo, Patinkin, and Migenes.

March 12 Blitzstein's *Regina*

A bleak picture of upper-class American life at the turn of the last century in a small Southern town, *Regina* exposes how greed can destroy a family. Ciesinski, Ramey, Rieux, and Greenawald sing principal roles.

March 19 Gounod's *Faust*

Faust (Domingo) sells his soul to the devilish Méphistophélès (Ghiaurov) in return for a love affair with Marguerite (Freni). (From the Ruocchio Archives.)

March 26 Spring Membership Drive

Bob Chapman and Rob Kennedy play arias, ensembles, and choruses as you pledge your support for the WCPE Opera House.



Renata Scotto

April 2 Delibes's *Lakmé*

Indian Brahmin priest Nilakantha (Van Dam) kills British officer G erald (Kunde), who's been having an affair with the priest's daughter Lakm e (Dessay).

April 9 Wagner's *Parsifal*

A foolish young man, Parsifal (Hofmann), gains wisdom through compassion and brings healing to Amfortas (Van Dam), leader of the Grail Knights.

April 16 Rossini's *Semiramide*

Assur (Rouleau), who helps Semiramide (Sutherland) murder her husband, wants to marry the queen, but she's attracted to Arsace (Horne)—who turns out to be her own son. (From the Ruocchio Archives.)

April 23 Poulenc's *Dialogues des Carm lites*

An emotionally unstable Blanche de la Force (Dubosc) enters a Carmelite convent seeking peace. Against the background of the French Revolution, she and other nuns willingly go to the guillotine.

April 30 Mozart's *Die Entf hrung aus dem Serail*

Belmonte (Schreier) rescues Konstanze (Auger), Blondchen (Grist), and Pedrillo (Neukirch) from a Turkish harem despite roadblocks of Osmin (Moll).

May 7 Giordano's *Andrea Ch nier*

During the French Revolution, the poet Ch nier (Del Monaco) rebukes Maddalena (Tebaldi) for scorning love. Later, they fall in love, but her former boyfriend G rard (Bastianini) denounces Ch nier.

May 14 Puccini's *Il Trittico*

Scotto, Domingo, and Wixell star in *Il Tabarro*; Scotto is Suor Angelica; and Gobbi, Cotrubas, and Domingo head the cast in *Gianni Schicchi*.

May 21 Donizetti's *Don Pasquale*

Pasquale (Bruscantini) wants to marry to prevent nephew Ernesto (Winbergh) from inheriting his estate. Malatesta (Nucci) suggests his sister Norina (Freni), who's in love with Ernesto. (From the Ruocchio Archives.)

May 28 Weill's *Street Scene*

A story of everyday life in a New York City tenement, culminating in murder and the decision of the heroine (Barstow) to seek a better life elsewhere.

March 1

Bach: Motet BWV 227
 Sowerby: *The Throne of God*

March 8

Bach: *St. Luke Passion* BWV 246
 Poulenc: *Stabat Mater*

March 15

Bach: Cantata BWV 54
 Haydn: *The Seven Last Words of Christ*

March 22

Spring Membership Drive

March 29

Spring Membership Drive

April 5

Bach: Cantata BWV 182
 Boccherini: *Stabat Mater*

April 12

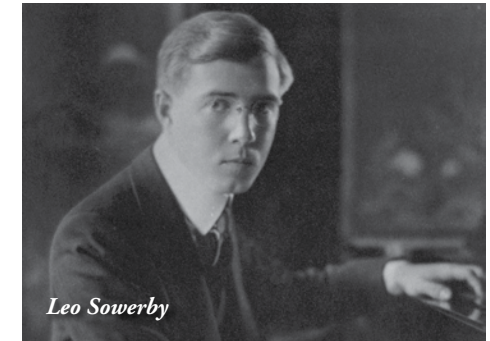
Bach: Cantata BWV 4
 MacMillan: *Edinburgh Te Deum*

April 19

Bach: Cantata BWV 42
 Handel: *La Resurrezione*



Andr  Caplet



Leo Sowerby

Great Sacred Music

Sundays at 8:00 a.m. (Eastern)
 With host Rob Kennedy

April 26

Bach: Cantata BWV 112
 Caplet: *Le Miroir de Jesus*

May 3

Bach: Cantata BWV 12
 Haydn: *Paukenmesse*

May 10

Bach: Cantata BWV 166
 Gawthrop: *How Beautiful Upon the Mountains*

May 17

Bach: Cantata BWV 86
 Lloyd Webber: *Requiem*

May 24

Bach: Cantata BWV 11
 Tyberg: *Mass in G*

May 31

Bach: Cantata BWV 218
 Brahms: *A German Requiem*

Sponsors of Great Sacred Music

Great Sacred Music is made possible by our listeners and the following people and organizations:

All Saints Anglican Church
 Raleigh, NC

The Chapel of the Cross
 Chapel Hill, NC

University Presbyterian Church
 Chapel Hill, NC

Dr. Alfred Goshaw
 Chapel Hill, NC

Dr. and Mrs. Harold Chapman
 Macon, GA

James H. Lazenby
 Fearington Village, NC

Dr. Jerry Grise
 Cary, NC

William Marley
 Raleigh, NC

Thomas Nutt-Powell
 Boston, MA

William Raper of Trinity Concepts
 Raleigh, NC

Claude and Sarah Snow
 Chapel Hill, NC

Fred Walters
 Raleigh, NC

David Crabtree
 Raleigh, NC

Preview!

Sundays at 6:00 p.m. ET
With hosts Steve Thebes and David Jeffrey Smith

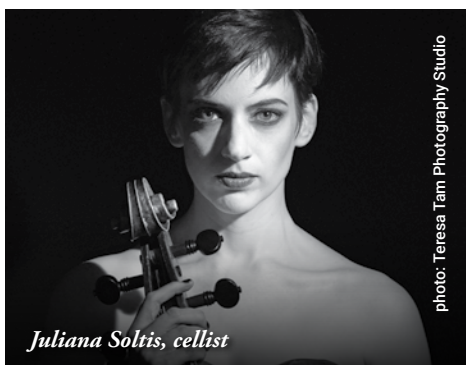
By Rob Kennedy

Every Sunday evening from 6:00 to 9:00 p.m. Eastern, The Classical Station presents Preview, a program featuring new Classical recording releases. From symphonies to vocal music, from ballet to chamber music, we sample new interpretations of familiar music, as well as newer music. A regular feature of Preview is an interview at approximately 7:00 p.m. We speak with performing musicians and composers from around the world. If you miss the interview on a Sunday evening, remember that you will find many of our interviews on the Conversations page on our website, accessible in the Features section at theclassicalstation.org. This spring our guests will include conductor Zebulon Highben, cellist Juliana Soltis, and violinist Rachel Barton Pine.

We also offer a look at upcoming events here in our local area. Central North Carolina is home to dozens of orchestras, bands, choral societies, and instrumental ensembles of all kinds. Contact our Production team at wcpe@theclassicalstation.org to have your organization's event added to our Classical Arts Calendar.



Zebulon Highben, conductor



Juliana Soltis, cellist



Rachel Barton Pine, violinist



Want to listen to Classical music on your smart phone? The free WCPE Radio app plays nothing but Great Classical Music, 24 hours a day. You can hear the music you love on The Classical Station everywhere you go!

wavelengths

Sundays at 9:00 p.m. (Eastern)
With host Ed Amend

Born in Bulgaria and raised in London, Dobrinka Tabakova writes music that draws upon both eastern and western European traditions. Her works have been commissioned by numerous organizations, including the Royal Philharmonic Society and BBC Radio 3, and her 2013 album *String Paths* was nominated for a Grammy Award.

Join The Classical Station on Sunday, March 8, as we celebrate the music of Dobrinka Tabakova on Wavelengths. It's part of our larger feature of contemporary female composers during Women's History Month.



Dobrinka Tabakova

Wavelengths brings you the best in contemporary Classical music, featuring works from the mid-20th century through today.

peaceful reflections

Sundays at 10:00 p.m. ET
With host Ed Amend

Following Wavelengths, WCPE brings you two hours of music intended to help you unwind from the week that's ending and prepare for the one ahead. Peaceful Reflections is a thoughtful, relaxing mix of orchestral, chamber, choral, and organ works, a perfect way to end a Sunday evening.



Don't forget to like our Facebook pages!
Look for Quarter Notes as well as WCPE The Classical Station.



program listings (march)

March Featured Works

All programming is subject to change. For a complete list of a specific day's music, go to TheClassicalStation.org.

1 Sunday

7:00 a.m.	Chopin: Barcarolle in F-sharp
9:00 a.m.	Bach: Motet no. 3 (<i>Jesu, Meine Freude</i>)
10:00 a.m.	Sowerby: <i>The Throne of God</i>
12:00 p.m.	Chopin: Piano Sonata no. 3 in B Minor
1:00 p.m.	Brahms: Violin Concerto in D
2:00 p.m.	Farrenc: Clarinet Trio in E-flat
3:00 p.m.	Chopin: Piano Concerto no. 1 in E Minor
4:00 p.m.	Smyth: Serenade in D
5:00 p.m.	Chopin: Ballade no. 1 in G Minor
9:00 p.m.	Lieberson: "Love, Love, the Clouds Went up the Tower of the Sky" from <i>Neruda Songs</i>

2 Monday

9:00 a.m.	Mozart: Clarinet Concerto in A
10:00 a.m.	Smetana: Overture and Dances from <i>The Bartered Bride</i>
12:00 p.m.	Sanz: <i>Suite Española</i>
2:00 p.m.	Chaminade: "Fairy Tales"
3:00 p.m.	Smetana: String Quartet no. 1 in E Minor (<i>From My Life</i>) (orchestrated)
5:00 p.m.	Paradis: "Sicilienne"
7:00 p.m.	My Life in Music
8:00 p.m.	Smetana: <i>Má Vlast</i>
9:00 p.m.	Tchaikovsky: <i>Capriccio Italian</i>



Anne Akiko Meyers b. 1970
(50th birthday)

10:00 p.m.	Mendelssohn-Hensel: "March" from <i>The Year</i>
------------	--

3 Tuesday

9:00 a.m.	C. Schumann: Piano Concerto in A Minor
10:00 a.m.	Haydn: Symphony no. 94 in G (<i>Surprise</i>)
12:00 p.m.	Bach: Orchestral Suite no. 3 in D
2:00 p.m.	Price: "Dances in the Canebrakes"
3:00 p.m.	Telemann: Overture in B-flat
7:00 p.m.	Alfvén: <i>Swedish Rhapsody</i> no. 1 (<i>Midsummer Vigil</i>)
8:00 p.m.	Beethoven: Piano Concerto no. 1 in C
9:00 p.m.	Brahms: Horn Trio in E-flat
10:00 p.m.	Higdon: "Amazing Grace"

4 Wednesday

9:00 a.m.	Vivaldi: Lute Concerto in D
10:00 a.m.	Mozart: Symphony no. 38 in D (<i>Prague</i>)
12:00 p.m.	Harbach: <i>Jubilee Symphony</i>
2:00 p.m.	Vivaldi: <i>Four Seasons</i>
3:00 p.m.	Wagner: <i>Siegfried Idyll</i>
7:00 p.m.	Beach: Piano Trio in A Minor
8:00 p.m.	Rachmaninoff: Piano Concerto no. 2 in C Minor
9:00 p.m.	Tchaikovsky: Violin Concerto in D

5 Thursday

9:00 a.m.	Roellig: Horn Concerto in D
10:00 a.m.	Sullivan: <i>Incidental Music from Shakespeare's The Tempest</i>
12:00 p.m.	Villa-Lobos: "Gavota-Choro" from <i>Brazilian Popular Suite</i>
1:00 p.m.	Respighi: Suite no. 3 from <i>Ancient Airs and Dances</i>
2:00 p.m.	Delius: <i>In a Summer Garden</i> , a Rhapsody
3:00 p.m.	Farrenc: Piano Trio no. 1 in E-flat
6:00 p.m.	Mozart: Horn Concerto no. 3 in E-flat
7:00 p.m.	Opera House
10:00 p.m.	Footo: Suite in E for Strings

6 Friday

8:00 a.m.	Strauss II: <i>Artists' Life</i>
9:00 a.m.	All-Request Friday
10:00 p.m.	Tchaikovsky: <i>Melancholy Serenade</i> , op. 26

7 Saturday

7:00 a.m.	Haydn: Symphony no. 6 in D (<i>Morning</i>)
8:00 a.m.	Ravel: <i>Noble and Sentimental Waltzes</i>
9:00 a.m.	Farrenc: Piano Quintet no. 1 in A Minor

program listings (march)

11 Wednesday

9:00 a.m.	Ponchielli: "Dance of the Hours" from <i>La Gioconda</i>
10:00 a.m.	Mendelssohn: Symphony no. 5 (<i>Reformation</i>)
12:00 p.m.	Debussy: "Clair de Lune"
2:00 p.m.	Medtner: Piano Concerto no. 2 in C Minor
3:00 p.m.	Prokofiev: <i>Lieutenant Kijé</i> Suite
7:00 p.m.	Mozart: Oboe Concerto in C
8:00 p.m.	Schumann: Symphony no. 2 in C
9:00 p.m.	Beethoven: Symphony no. 6 in F (<i>Pastoral</i>)
10:00 p.m.	Beach: Violin Sonata in A Minor

12 Thursday

9:00 a.m.	Arne: Symphony no. 3 in E-flat
10:00 a.m.	Mussorgsky: <i>Pictures at an Exhibition</i>
12:00 p.m.	Lili Boulanger: Prelude in D-flat
2:00 p.m.	Mozart: Symphony no. 35 in D (<i>Haffner</i>)
3:00 p.m.	Falla: Four Dances from <i>The Three-Cornered Hat</i>
5:00 p.m.	Wagner: "Entry of the Guests at Wartburg" from <i>Tannhäuser</i>
7:00 p.m.	Opera House
10:00 p.m.	Mendelssohn-Hensel: String Quartet in E-flat

13 Friday

8:00 a.m.	Suppé: "Light Cavalry" Overture
9:00 a.m.	All-Request Friday
10:00 p.m.	Farrenc: Nonetto in E-flat

14 Saturday

8:00 a.m.	E. Bernstein: Suite from <i>To Kill a Mockingbird</i>
9:00 a.m.	Dukas: <i>Sorcerer's Apprentice</i>
10:00 a.m.	Gershwin: <i>Rhapsody in Blue</i>
11:00 a.m.	Rodgers: Five Selections from <i>Victory at Sea</i>
12:00 p.m.	Jóhannsson: <i>The Theory of Everything</i> Suite
1:00 p.m.	Metropolitan Opera
4:00 p.m.	Williams: "Marion's Theme" from <i>Raiders of the Lost Ark</i>
5:00 p.m.	John Powell: <i>How to Train Your Dragon</i> , Selections

15 Sunday

7:00 a.m.	Barry: Suite from <i>The Lion in Winter</i>
-----------	---

10:00 a.m.	Ravel: <i>Mother Goose</i> Ballet
11:00 a.m.	Rossini: Overture to <i>William Tell</i>
12:00 p.m.	Ravel: "Pavane for a Dead Princess"
1:00 p.m.	Metropolitan Opera
5:00 p.m.	Ravel: <i>Le Tombeau de Couperin</i>

8 Sunday

7:00 a.m.	C.P.E. Bach: String Symphony in C
9:00 a.m.	Bach: <i>St. Luke Passion</i>
10:00 a.m.	Poulenc: <i>Stabat Mater</i>
12:00 p.m.	Rodrigo: <i>Concierto de Aranjuez</i>
1:00 p.m.	Hovhanness: "Prayer of St. Gregory" for Trumpet and Strings
2:00 p.m.	E. Mayer: Piano Trio in B Minor
3:00 p.m.	C.P.E. Bach: Cello Concerto in A Minor
4:00 p.m.	Boccherini: Guitar Quintet no. 4 in D (<i>Fandango</i>)
5:00 p.m.	My Life in Music

9 Monday

9:00 a.m.	Chopin: Piano Concerto no. 2 in F Minor
10:00 a.m.	Barber: "Adagio for Strings"
12:00 p.m.	Chaminade: "Carnival Waltz"
2:00 p.m.	Mendelssohn: Symphony no. 4 in A (<i>Italian</i>)
3:00 p.m.	C. Schumann: <i>Three Romances for Piano</i>
5:00 p.m.	Barber: Overture to <i>The School For Scandal</i>
7:00 p.m.	Renaissance Fare
8:00 p.m.	Barber: Symphony no. 1
9:00 p.m.	Dvořák: Violin Concerto in A Minor
10:00 p.m.	Hildegard von Bingen: "O Felix Anima"

10 Tuesday

9:00 a.m.	Bach: Brandenburg Concerto no. 6 in B-flat
10:00 a.m.	Saint-Saëns: <i>Carnival of the Animals</i>
12:00 p.m.	Debussy: <i>Prelude to the Afternoon of a Faun</i>
2:00 p.m.	Sarasate: <i>Carmen Fantasy</i>
3:00 p.m.	Elgar: <i>Nursery Suite</i>
6:00 p.m.	Mendelssohn-Hensel: <i>Capriccio in A-flat</i>
7:00 p.m.	Kabalevsky: <i>The Comedians</i> , Suite for Orchestra
8:00 p.m.	Mozart: Symphony no. 25 in G Minor
9:00 p.m.	Weber: <i>Grand Duo Concertante</i> for Clarinet and Piano

Spring Membership Drive 2020

WCPE is pleased to offer the following selection of thank-you gifts when you make a donation to support Great Classical Music on WCPE. All members also receive a subscription to *Quarter Notes*. Learn more about the benefits of membership at TheClassicalStation.org.

For a \$50 donation

- Maroon writing pen with stylus

For a \$60 donation (or \$5/mo. sustainer)

- Car magnet, blue with white logo
- Stainless-steel bottle opener

For a \$100 donation

- WCPE insulated grocery tote, cobalt blue



t-shirt

For a \$120 donation (or \$10/mo. sustainer)

- Maroon baseball cap
- WCPE T-shirt, maroon (sizes M, L, XL, XXL)
- Tomahawk 5-inch flashlight
- Choose one of the following CDs:
 - CD #1: *Coffee and Classical*
 - CD #2: Baltimore Consort: *The Food of Love*
 - CD #3: Sheku Kanneh-Mason: *Elgar*
 - CD #4: *Respighi: Roman Trilogy*
 - CD #5: Holst: *The Planets*

For a \$150 donation

- CD #6: *Bach: The Six Partitas*
- CD #7: *Duruflé: Complete Choral Works*



baseball cap

For a \$180 donation (or \$15/mo. sustainer)

- 16-oz. stainless insulated bottle, blue
- CD #8: *Berlioz: La Damnation de Faust*
- DVD #1: *Puccini: Madama Butterfly*

For a \$200 donation

- Day dedication, four times on the day you choose

For a \$240 donation (or \$20/mo. sustainer)

- CD #9: *L'Archibudelli Play Beethoven*

For a \$300 donation (or \$25/mo. sustainer)

- Sport Challenger umbrella



umbrella

For a \$500 donation

- Monthly on-air acknowledgment

For a \$1200 donation (or \$100/mo. sustainer)

- Weekly on-air acknowledgment

CD #1: *Coffee and Classical*

Take some time for yourself and enjoy this great collection of relaxing classics by Bach, Mozart, Saint-Saëns, Chopin, and more.

CD #2: Baltimore Consort: *The Food of Love*

Subtitled "Songs, Dances, and Fancies for Shakespeare," this esteemed early music ensemble perform delightful musical gems dating from 16th to 17th century England.

CD #3: Sheku Kanneh-Mason: *Elgar*

Award-winning cellist Kanneh-Mason masters Elgar's monumental Cello Concerto in E Minor and brings his lyrical touch to an endearing set of miniatures as well. Sir Simon Rattle leads the London Symphony Orchestra.

CD #4: *Respighi: Roman Trilogy*

JoAnn Falletta leads the Buffalo Philharmonic Orchestra in Respighi's orchestral masterpieces: *The Pines of Rome*, *Fountains of Rome*, and *Roman Festivals*. Exuberantly played and sonically stunning.

CD #5: *Holst: The Planets*

Michael Stern leads the Kansas City Symphony in this best loved suite by Gustav Holst, along with the composer's ballet music from *The Perfect Fool*.

CD #6: *Bach: The Six Partitas*

Pianist Angela Hewett's performance of these old musical friends is inspired by her lifelong love of Bach and is a joy to hear.

CD #7: *Duruflé: Complete Choral Works*

The Houston Chamber Choir performs a glorious program of music by Maurice Duruflé, reflecting both his meticulous craftsmanship and his love for the choral heritage of his French homeland.

CD #8: *Berlioz: La Damnation de Faust*

Tenor Michael Spyres and mezzo-soprano Joyce DiDonato lead a stellar cast in Berlioz's dramatic masterpiece. John Nelson conducts the Strasbourg Philharmonic and Gulbenkian Choir. (Three discs.)

CD #9: *L'Archibudelli Play Beethoven*

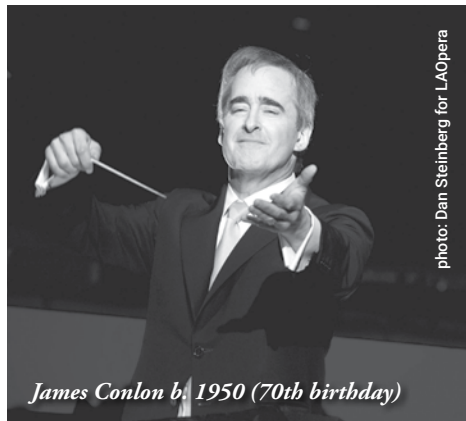
As we gear up for the 250th anniversary of Beethoven's birth, consider this compilation of chamber works performed by one of the 20th century's premier string trios and its guests. (Five discs.)

DVD #1: *Puccini: Madama Butterfly*

Albanian soprano Ermonela Jaho is Cio-Cio-San in this stunning Royal Opera House production, with Music Director Antonio Pappano demonstrating his special affinity for the music of Puccini.



program listings (march)



James Conlon b. 1950 (70th birthday)

- 10:00 a.m. Haydn: *The Seven Last Words of our Savior on the Cross* (Choral Version)
- 12:00 p.m. Gershwin: *An American in Paris*
- 1:00 p.m. Bach: Toccata and Fugue in D Minor
- 2:00 p.m. Williams: Three Pieces from *Schindler's List*
- 3:00 p.m. Berlioz: *Symphonie Fantastique*
- 4:00 p.m. Williams: Suite from *Star Wars, Episode VII: The Force Awakens*
- 5:00 p.m. Renaissance Fare

16 Monday

- 9:00 a.m. Mendelssohn: Symphony no. 3 in A Minor (*Scottish*)
- 10:00 a.m. Dvořák: Symphony no. 8 in G, op. 88
- 12:00 p.m. Rusby: "Underneath the Stars"
- 2:00 p.m. Prokofiev: Symphony no. 1 in D (*Classical*)
- 3:00 p.m. Beethoven: Symphony no. 2 in D
- 6:00 p.m. Mozart: "Voi Che Sapete" from *Le Nozze de Figaro*
- 7:00 p.m. Schubert: Sonatina in D
- 8:00 p.m. Haydn: Symphony no. 104 in D (*London*)
- 9:00 p.m. Schumann: Symphony no. 3 in E-flat (*Rhenish*)
- 10:00 p.m. Higdon: "Legacy"

17 Tuesday

- 8:00 a.m. Black: "Reeling" from *Laments and Dances from the Irish*
- 9:00 a.m. Stanford: Symphony no. 3 in F Minor (*Irish*)
- 10:00 a.m. Field: Piano Concerto no. 1 in E-flat
- 12:00 p.m. Traditional: "Irish Tune from County Derry"
- 2:00 p.m. Sullivan: Symphony in E (*Irish*)

- 3:00 p.m. Arnold: *Four Irish Dances*
- 7:00 p.m. Stanford: *Irish Rhapsody* no. 1
- 8:00 p.m. Beethoven: Piano Concerto no. 5 in E-flat, op. 73 (*Emperor*)
- 9:00 p.m. Duff: *Echoes of Georgian Dublin*
- 10:00 p.m. Balfe: "Marble Halls" from *The Bohemian Girl*

18 Wednesday

- 9:00 a.m. Rimsky-Korsakov: *Capriccio Espagnol*
- 10:00 a.m. Liszt: *Les Préludes*
- 11:00 a.m. Mozart: Sinfonia Concertante in E-flat
- 12:00 p.m. Chaminade: "Spanish Serenade"
- 2:00 p.m. Zemlinsky: Symphony no. 1 in D Minor
- 3:00 p.m. Rimsky-Korsakov: *Scheherazade*
- 7:00 p.m. Debussy: *Games*
- 8:00 p.m. Rimsky-Korsakov: Suite from *The Golden Cockerel*
- 9:00 p.m. Tchaikovsky: Symphony no. 2 in C Minor (*Little Russian*)

19 Thursday

- 8:00 a.m. Strauss II: "Emperor Waltz"
- 9:00 a.m. Beethoven: Triple Concerto in C
- 10:00 a.m. Harbach: *Frontier Fancies* for Violin and Orchestra
- 12:00 p.m. Bach: *Brandenburg Concerto* no. 4 in G
- 2:00 p.m. Mozart: Symphony no. 39 in E-flat
- 3:00 p.m. C. Schumann: Piano Trio in G Minor
- 5:00 p.m. Ravel: "The Fairy Garden"
- 7:00 p.m. Opera House
- 10:00 p.m. I.B. Smith: Sonata for Violin and Piano

March 20-29

Spring 2020 Membership Drive
Call 800.556.5178

WCPE is listener-supported Classical radio. Please do your part to help continue this vital service.

30 Monday

- 8:00 a.m. Smetana: "Dance of the Comedians" from *The Bartered Bride*
- 9:00 a.m. Grieg: Suite no. 2 from *Peer Gynt*
- 10:00 a.m. Beethoven: Symphony no. 7 in A
- 12:00 p.m. Chaminade: "Valse-Caprice"
- 2:00 p.m. Bizet: Symphony in C
- 3:00 p.m. Mozart: Serenade no. 13 in G (*Eine Kleine Nachtmusik*)
- 7:00 p.m. Telemann: *Don Quixote* Suite

program listings (march/april)

- 8:00 p.m. Brahms: Piano Concerto no. 1 in D Minor
- 9:00 p.m. Ravel: *Daphnis et Chloé*, Suite no. 2
- 10:00 p.m. Hildegard von Bingen: "Ave Generosa"

31 Tuesday

- 9:00 a.m. Tchaikovsky: Symphony no. 3 in D (*Polish*)
- 10:00 a.m. Haydn: Cello Concerto no. 2 in D
- 12:00 p.m. Handel: Concerto Grosso in G
- 2:00 p.m. Price: *Concerto in One Movement*
- 3:00 p.m. Haydn: Symphony no. 101 in D (*Clock*)
- 5:00 p.m. Beach: "From Blackbird Hills"
- 7:00 p.m. Grieg: *Holberg Suite*
- 8:00 p.m. Haydn: Symphony no. 92 in G (*Oxford*)
- 9:00 p.m. Tchaikovsky: *Variations on a Rococo Theme*
- 10:00 p.m. Haydn: String Quartet in C (*Emperor*)

April Featured Works

All programming is subject to change. For a complete list of a specific day's music, go to TheClassicalStation.org.

1 Wednesday

- 8:00 a.m. Strauss II: "Perpetual Motion (a Musical Joke)"
- 9:00 a.m. Rachmaninoff: Piano Concerto no. 3 in D Minor
- 10:00 a.m. Handel: *Water Music*
- 12:00 p.m. Holst: Ballet Music from *The Perfect Fool*
- 2:00 p.m. Rachmaninoff: *Rhapsody on a Theme of Paganini*
- 3:00 p.m. Weber: Clarinet Concerto no. 1 in F Minor
- 7:00 p.m. P.D.Q. Bach: *1712 Overture*
- 8:00 p.m. Rachmaninoff: *Symphonic Dances*
- 9:00 p.m. Mendelssohn: Violin Concerto in E Minor
- 10:00 p.m. Busoni: "Berceuse Élégiague"

2 Thursday

- 9:00 a.m. Dvořák: *Scherzo Capriccioso*
- 10:00 a.m. Mozart: Piano Concerto no. 21 in C
- 12:00 p.m. Rossini: Overture to *Cinderella*
- 1:00 p.m. D'Indy: *Symphony on a French Mountain Air*
- 2:00 p.m. Bach: Orchestral Suite no. 2 in B Minor
- 3:00 p.m. Lachner: Suite no. 7 in D Minor

- 6:00 p.m. Brahms: *Academic Festival Overture*
- 7:00 p.m. Opera House
- 10:00 p.m. Grandval: *Romance and Gavotte*

3 Friday

- 8:00 a.m. Chopin: Étude in A-flat (*The Shepherd Boy*)
- 9:00 a.m. All-Request Friday
- 10:00 p.m. Castelnuovo-Tedesco: *Three Mediterranean Preludes*

4 Saturday

- 7:00 a.m. Falla: *Seven Spanish Folksongs*
- 8:00 a.m. Rodrigo: *Fantasia for a Gentleman*
- 9:00 a.m. Glinka: "Memory of a Summer Night in Madrid"
- 10:00 a.m. Granados: *Romantic Scenes*
- 11:00 a.m. Moszkowski: *Spanish Dances*, Book 1
- 12:00 p.m. Malats: "Serenata Española"
- 1:00 p.m. Metropolitan Opera
- 3:00 p.m. Granados: *Allegro de Concierto*
- 4:00 p.m. Breton: *Salamanca (Symphonic Poem)*
- 5:00 p.m. Falla: *Nights in the Gardens of Spain*

5 Sunday

- 7:00 a.m. Victoria: "O vos Omnes"
- 9:00 a.m. Bach: Cantata 182 (*Himmelskornig, sei Willkommen*)
- 10:00 a.m. Boccherini: *Stabat Mater*, op. 61
- 12:00 p.m. Glinka: "Jota Aragonaise"
- 1:00 p.m. Turina: *Danzas Fantasticas*



Donate your used car or other vehicle to WCPE. All donations are tax-deductible. Find out more by calling **877.927.3872.**

program listings (april)

2:00 p.m. Albéniz: "Fête-Dieu à Seville"
 3:00 p.m. Falla: *Homenajes*
 4:00 p.m. Sarasate: *Gypsy Airs*
 5:00 p.m. Albéniz: *Suite Española*

6 Monday

9:00 a.m. Mozart: Quintet in E-flat for Piano and Winds
 10:00 a.m. Saint-Saëns: Piano Concerto no. 2 in G Minor
 12:00 p.m. Ireland: *A London Overture*
 2:00 p.m. Bach: Violin Concerto no. 1 in A Minor
 3:00 p.m. Brahms: Symphony no. 4 in E Minor
 7:00 p.m. My Life in Music
 8:00 p.m. Prokofiev: *Lieutenant Kijé* Suite
 9:00 p.m. Sibelius: *Lemminkäinen and the Maidens of Saari*
 10:00 p.m. Brahms: String Quartet no. 3 in B-flat

7 Tuesday

9:00 a.m. Beethoven: Piano Concerto no. 3 in C Minor
 10:00 a.m. Dvořák: Symphony no. 5 in F
 12:00 p.m. R. Strauss: Waltzes from *Der Rosenkavalier*
 2:00 p.m. Rachmaninoff: Piano Concerto no. 2 in C Minor
 3:00 p.m. Schumann: Symphony no. 3 in E-flat (*Rhenish*)
 7:00 p.m. Mozart: Piano Concerto no. 24 in C Minor
 8:00 p.m. Bach: Concerto in D Minor for Two Violins
 9:00 p.m. Chopin: Piano Sonata no. 2 in B-flat Minor
 10:00 p.m. Milano: *Three Fantasias for Lute*

8 Wednesday

9:00 a.m. Elgar: *The Wand of Youth*, Suite no. 1
 10:00 a.m. Tchaikovsky: Symphony no. 1 in G Minor (*Winter Dreams*)
 12:00 p.m. Tartini: Violin Concerto in A Minor
 2:00 p.m. Mozart: Symphony no. 29 in A
 3:00 p.m. Brahms: Serenade no. 1 in D

6:00 p.m. The Passover Story
 7:00 p.m. Tartini: Sonata in G Minor (*The Devil's Trill*)
 8:00 p.m. Beethoven: Violin Concerto in D
 9:00 p.m. Schubert: Piano Quintet in A (*Trout*)
 10:00 p.m. Brahms: Intermezzo in A, op. 118, no. 2

9 Thursday

9:00 a.m. Grieg: Three Orchestral Pieces from *Sigurd Jorsalfar*
 10:00 a.m. Dvořák: *Slavonic Dances*, op. 72
 12:00 p.m. Handel: Largo from *Xerxes*
 1:00 p.m. Medtner: Piano Concerto no. 3 in E Minor
 2:00 p.m. Copland: *Appalachian Spring*
 3:00 p.m. Brahms: *Variations on a Theme by Haydn*
 5:00 p.m. Bach: *Brandenburg Concerto* no. 2 in F
 7:00 p.m. Opera House
 10:00 p.m. Vaughan Williams: *Fantasia on a Theme of Thomas Tallis*

10 Friday

8:00 a.m. Mozart: Violin Sonata in C, K. 303
 9:00 a.m. All-Request Friday
 10:00 p.m. Tchaikovsky: "April (The Snowdrop)" from *The Seasons*

11 Saturday

7:00 a.m. Holst: *St. Paul's Suite*
 8:00 a.m. Handel: Concerto Grosso in B-flat
 9:00 a.m. Respighi: "Spring" from *Three Botticelli Pictures*
 10:00 a.m. W.F. Bach: Sinfonia in D Minor
 11:00 a.m. Beethoven: Piano Sonata no. 8 in C Minor (*Pathétique*)
 12:00 p.m. Mouret: *First Suite of Symphonies*
 1:00 p.m. Metropolitan Opera
 5:00 p.m. Ginastera: "Dance of the Delightful Young Girl"

12 Sunday

7:00 a.m. Billings: "Easter Anthem"
 9:00 a.m. Bach: Cantata 4 (*Christ Lag in Todesbanden*)

program listings (april)

10:00 a.m. MacMillan: *The Edinburgh Te Deum*
 12:00 p.m. Lanner: "The Suitors"
 1:00 p.m. Haydn: Symphony no. 100 in G (*Military*)
 2:00 p.m. Tchaikovsky: Suite from *Swan Lake*
 3:00 p.m. Telemann: Concerto in F for Three Violins from *Tafelmusik*
 4:00 p.m. Dvořák: *American Suite*
 5:00 p.m. My Life in Music

13 Monday

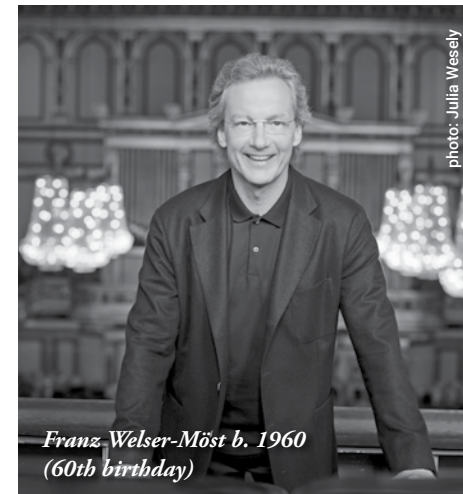
8:00 a.m. Albinoni: Trumpet Concerto in B-flat
 9:00 a.m. Bennett: Piano Concerto no. 4 in F Minor
 10:00 a.m. Beethoven: Clarinet Trio in B-flat
 12:00 p.m. Grainger: "Children's March: Over the Hills and Far Away"
 2:00 p.m. Schubert: Sonata in A Minor (*Arpeggione*)
 3:00 p.m. Mozart: Symphony no. 41 in (*Jupiter*)
 6:00 p.m. Grainger: *A Lincolnshire Posy*
 7:00 p.m. Renaissance Fare
 8:00 p.m. Mozart: Piano Concerto no. 27 in B-flat
 9:00 p.m. Brahms: Symphony no. 3 in F

14 Tuesday

8:00 a.m. Falla: "Ritual Fire Dance"
 9:00 a.m. Chopin: *Andante Spianato and Grand Polonaise in E-flat*
 10:00 a.m. Grieg: *Symphonic Dances*
 12:00 p.m. Tchaikovsky: "Pezzo Capriccioso"
 2:00 p.m. Nielsen: Symphony no. 2 (*The Four Temperaments*)
 3:00 p.m. Lalo: Cello Concerto in D Minor
 7:00 p.m. Mussorgsky: *Night on Bald Mountain*
 8:00 p.m. Dvořák: Cello Concerto in B Minor
 9:00 p.m. Tchaikovsky: Symphony no. 5 in E Minor

15 Wednesday

9:00 a.m. Bach: *Orchestral Suite* no. 3 in D
 10:00 a.m. Mendelssohn: Symphony no. 4 in A (*Italian*)
 12:00 p.m. Vaughan Williams: *English Folk Song Suite*
 2:00 p.m. Brahms: Serenade no. 2 in A
 3:00 p.m. Dvořák: Symphony no. 7 in D Minor
 7:00 p.m. Elgar: *Enigma Variations*
 8:00 p.m. Mozart: Symphony no. 40 in G Minor



Franz Welser-Möst b. 1960
(60th birthday)

photo: Julia Wesely

9:00 p.m. Brahms: Symphony no. 1 in C Minor

16 Thursday

8:00 a.m. Wagner: Prelude to Act 1 of *Die Meistersinger von Nürnberg*
 9:00 a.m. Bach: Concerto in D Minor for Violin and Oboe
 10:00 a.m. Mozart: Piano Concerto no. 23 in A
 12:00 p.m. Handel: "See, the Conquering Hero Comes"
 2:00 p.m. Dvořák: Serenade in D Minor for Winds
 3:00 p.m. Tchaikovsky: *Romeo and Juliet Fantasy Overture*
 4:00 p.m. Mozart: Overture to *The Magic Flute*
 7:00 p.m. Opera House
 10:00 p.m. Mompou: *Canción y Danza* no. 5

17 Friday

8:00 a.m. Addinsell: "Warsaw Concerto"
 9:00 a.m. All-Request Friday
 10:00 p.m. Hailstork: Two Romances for Viola and Chamber Ensemble

18 Saturday

7:00 a.m. Purcell: Suite from *Abdelazar*
 8:00 a.m. Couperin: *Concert Pieces*
 9:00 a.m. Buxtehude: Trio Sonata in D
 10:00 a.m. Bach: *Brandenburg Concerto* no. 3 in G
 11:00 a.m. Telemann: Concerto in E-flat for Two Horns from *Tafelmusik*
 12:00 p.m. Lalande: "First Caprice"
 12:30 p.m. Metropolitan Opera
 4:00 p.m. Handel: *Music for the Royal Fireworks*
 5:00 p.m. Bach: Violin Concerto no. 2 in E

Where can you hear specialty programming like Opera House, Great Sacred Music, and Renaissance Fare? Great Classical Music presented by knowledgeable announcers...here at The Classical Station.

program listings (april)

19 Sunday

7:00 a.m.	C.T. Pachelbel: <i>Magnificat</i>
9:00 a.m.	Bach: Cantata 42 (<i>Am Abend aber Desselbigen Sabbats</i>)
10:00 a.m.	Handel: <i>La Resurrezione</i>
12:00 p.m.	Bach: Italian Concerto in F
1:00 p.m.	Telemann: Overture in D from <i>Tafelmusik</i> , Part II
2:00 p.m.	Handel: Organ Concerto in B-flat
3:00 p.m.	Vivaldi: <i>Four Seasons</i>
4:00 p.m.	Albinoni: Oboe Concerto in D Minor
5:00 p.m.	Renaissance Fare

20 Monday

9:00 a.m.	Schumann: Symphony no. 4 in D Minor
10:00 a.m.	Weber: Clarinet Concerto no. 2 in E-flat
12:00 p.m.	Handel: Overture to <i>Berenice</i>
2:00 p.m.	Haydn: Trumpet Concerto in E-flat
3:00 p.m.	Beethoven: Symphony no. 3 in E-flat (<i>Eroica</i>)
7:00 p.m.	Sibelius: <i>Karelia</i> Suite
8:00 p.m.	Mendelssohn: Symphony no. 5 (<i>Reformation</i>)
9:00 p.m.	Mussorgsky: <i>Pictures at an Exhibition</i>
10:00 p.m.	Poulenc: Trio for Piano, Oboe, and Bassoon

21 Tuesday

9:00 a.m.	Vivaldi: Violin Concerto in E Minor (<i>Il Favorito</i>)
10:00 a.m.	Mozart: Piano Concerto no. 25 in C
12:00 p.m.	Praetorius: Dance Suite from <i>Terpsichore</i>

2:00 p.m.	Bach: Keyboard Concerto no. 1 in D Minor
3:00 p.m.	Schubert: Symphony no. 5 in B-flat
6:00 p.m.	Thompson: "Alleluia"
7:00 p.m.	Copland: <i>El Salón México</i>
8:00 p.m.	Schumann: <i>Concert Piece</i> in F for Four Horns and Orchestra
9:00 p.m.	Beethoven: Quintet in E-flat for Piano and Winds

22 Wednesday

8:00 a.m.	Torelli: Sinfonia in C
9:00 a.m.	Bruch: Violin Concerto no. 1 in G Minor
10:00 a.m.	Mozart: Symphony no. 32 in G
12:00 p.m.	Williams: "Adventures on Earth" from <i>E.T., the Extra-Terrestrial</i>
1:00 p.m.	Wagner: Overture to <i>Rienzi</i>
2:00 p.m.	Handel: <i>Faithful Shepherd</i> Ballet Suite
3:00 p.m.	Smyth: Overture to <i>The Wreckers</i>
7:00 p.m.	Mozart: Symphony no. 38 in D (<i>Prague</i>)
8:00 p.m.	Smyth: Concerto for Violin, Horn, and Orchestra
9:00 p.m.	Debussy: <i>La Mer (The Sea)</i>
10:00 p.m.	Wagner: Prelude to Act 1 and "Love-Death" from <i>Tristan and Isolde</i>

23 Thursday

8:00 a.m.	Bach: "Sheep May Safely Graze"
9:00 a.m.	Beethoven: Piano Concerto no. 4 in G
10:00 a.m.	Bizet: <i>Children's Games</i>
12:00 p.m.	Saint-Saëns: "Havanaise"
2:00 p.m.	Holst: <i>The Planets</i>
3:00 p.m.	Schubert: Selections from <i>Rosamunde</i>
6:00 p.m.	Leoncavallo: "Vesti la Giubba" from <i>Pagliacci</i>
7:00 p.m.	Opera House
10:00 p.m.	Telemann: Quartet in E Minor for Flute and Strings

24 Friday

8:00 a.m.	Bach: Prelude from Lute Suite in E
9:00 a.m.	All-Request Friday
10:00 p.m.	Albéniz: "Asturias"

25 Saturday

7:00 a.m.	Haydn: London Trio no. 3 in G
8:00 a.m.	Bach: Brandenburg Concerto no. 6 in B-flat
9:00 a.m.	Mendelssohn: Octet in E-flat
10:00 a.m.	Mozart: Piano Concerto no. 22 in E-flat

program listings (april/may)

11:00 a.m.	Strauss, R.: <i>Till Eulenspiegel's Merry Pranks</i>
12:00 p.m.	Bizet: <i>Carmen Suite</i> no. 1
1:00 p.m.	Metropolitan Opera
5:00 p.m.	Beethoven: Symphony no. 5 in C Minor

26 Sunday

7:00 a.m.	Higdon: "A Quiet Moment"
9:00 a.m.	Bach: Cantata 112 (<i>Der Herr ist Mein Getreuer Hirt</i>)
10:00 a.m.	Caplet: "The Mirror of Joy" from <i>The Mirror of Jesus</i>
12:00 p.m.	Strauss II: "Students' Joy" Waltz
1:00 p.m.	Dvořák: Symphony no. 9 in E Minor (<i>From the New World</i>)
2:00 p.m.	Brahms: Piano Concerto no. 2 in B-flat
3:00 p.m.	Sibelius: "Finlandia"
4:00 p.m.	Chopin: <i>Grand Fantasia on Polish Airs</i> in A
5:00 p.m.	Grieg: Suite no. 1 from <i>Peer Gynt</i>

27 Monday

8:00 a.m.	Flotow: Overture to <i>Martha</i>
9:00 a.m.	Prokofiev: Symphony no. 1 in D (<i>Classical</i>)
10:00 a.m.	Mendelssohn: Incidental Music from <i>A Midsummer Night's Dream</i>
12:00 p.m.	Fauré: Suite from <i>Masques et Bergamasques</i>
2:00 p.m.	Beethoven: Piano Sonata no. 15 in D (<i>Pastoral</i>)
3:00 p.m.	Prokofiev: Piano Concerto no. 3 in C
7:00 p.m.	Prokofiev: <i>Peter and the Wolf</i>
8:00 p.m.	Beethoven: Symphony no. 7 in A
9:00 p.m.	Respighi: <i>The Fountains of Rome</i>
10:00 p.m.	Prokofiev: "Autumnal Sketch"

28 Tuesday

9:00 a.m.	Berlioz: <i>Harold in Italy</i>
10:00 a.m.	Mendelssohn: <i>Hebrides</i> Overture
12:00 p.m.	Purcell: Trumpet Tune and Air
2:00 p.m.	Haydn: Symphony no. 45 in F-sharp Minor (<i>Farewell</i>)
3:00 p.m.	Barber: "Adagio for Strings"
7:00 p.m.	Strauss II: <i>Tales from the Vienna Woods</i>
8:00 p.m.	Saint-Saëns: Violin Concerto no. 3 in B Minor
9:00 p.m.	Brahms: Double Concerto for Violin and Cello in A Minor

10:00 p.m.	Ravel: <i>Sonate Posthume</i> for Violin and Piano
------------	--

29 Wednesday

8:00 a.m.	Sullivan: Overture to <i>The Mikado</i>
9:00 a.m.	Brahms: Violin Concerto in D
10:00 a.m.	Beethoven: Symphony no. 4 in B-flat
12:00 p.m.	Handel: "Arrival of the Queen of Sheba"
2:00 p.m.	Dvořák: Violin Concerto in A Minor
3:00 p.m.	Respighi: <i>The Birds</i>
5:00 p.m.	Rossini: Overture to <i>Semiramide</i>
7:00 p.m.	Grieg: <i>In Autumn</i>
8:00 p.m.	Mahler: Symphony no. 1 in D (<i>Titan</i>)
9:00 p.m.	Mozart: Piano Concerto no. 17 in G

30 Thursday

8:00 a.m.	Lehár: "Merry Widow Waltz"
9:00 a.m.	Mozart: Flute Concerto no. 1 in G
10:00 a.m.	Beethoven: Symphony no. 1 in C
12:00 p.m.	Verdi: "Va, Pensiero" from <i>Nabucco</i>
2:00 p.m.	Tchaikovsky: Symphony no. 4 in F Minor
3:00 p.m.	Copland: <i>Billy the Kid</i> Ballet Suite
5:30 p.m.	Lehár: "Gold and Silver Waltz"
7:00 p.m.	Opera House
10:00 p.m.	Brahms: "How Lovely is thy Dwelling Place"

May Featured Works

All programming is subject to change. For a complete list of a specific day's music, go to TheClassicalStation.org.

1 Friday

8:00 a.m.	Alfvén: Swedish Rhapsody no. 1 (<i>Midsummer Vigil</i>)
9:00 a.m.	All-Request Friday
10:00 p.m.	Debussy: Sonata for Flute, Viola, and Harp

2 Saturday

7:00 a.m.	A. Scarlatti: Sinfonia no. 2 in D
8:00 a.m.	Mozart: Horn Concerto no. 3 in E-flat
9:00 a.m.	Borodin: Symphony no. 2 in B Minor
10:00 a.m.	Telemann: <i>Whimsical</i> Symphony
11:00 a.m.	Berlioz: <i>Symphonie Fantastique</i>
12:00 p.m.	Weber: <i>Grand Duo Concertante</i> for Clarinet and Piano
1:00 p.m.	Metropolitan Opera

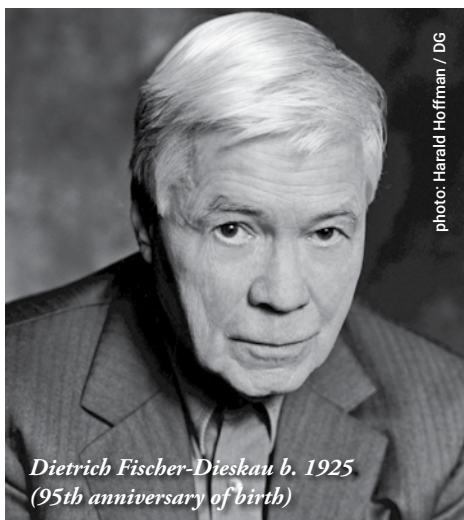


photo: Harald Hoffman / DG

Dietrich Fischer-Dieskau b. 1925
(95th anniversary of birth)

program listings (may)

4:00 p.m. Rachmaninoff: *Symphonic Dances*
5:00 p.m. Lumbye: "Carnival Joys"

3 Sunday

7:00 a.m. Dett: *Barcarolle (Morning)*
9:00 a.m. Bach: Cantata 12 (*Weinen, Klagen, Sorgen, Zagen*)
10:00 a.m. Haydn: *Missa in Tempore Belli*
12:00 p.m. Haydn: Symphony no. 96 in D (*Miracle*)
1:00 p.m. Dvořák: Piano Concerto in G Minor
2:00 p.m. Bach: *Orchestral Suite no. 4 in D*
3:00 p.m. Telemann: *Trumpet Concerto no. 2 in D*
4:00 p.m. Saint-Saëns: *Carnival of the Animals*
5:00 p.m. Widor: *Toccata from Symphony no. 5 in F Minor for Organ*

4 Monday

8:00 a.m. Řezníček: *Overture to Donna Diana*
9:00 a.m. Beethoven: Piano Concerto no. 1 in C
10:00 a.m. Glazunov: *Ballet Scenes*
12:00 p.m. Bizet: *Carmen Suite no. 2*
2:00 p.m. Řezníček: *Serenade for Strings*
3:00 p.m. Fauré: Suite from *Pelléas et Mélisande*
7:00 p.m. My Life in Music
8:00 p.m. Tchaikovsky: Piano Concerto no. 1 in B-flat Minor
9:00 p.m. R. Strauss: *Death and Transfiguration*
10:00 p.m. Finzi: *Five Bagatelles for Clarinet and Strings*

5 Tuesday

9:00 a.m. Copland: *El Salón México*
10:00 a.m. Elorduy: *Dos Acuarelas*
12:00 p.m. Barrios: "Julia Florida"
2:00 p.m. Moncayo: "Huapango"
3:00 p.m. Ponce: *Sonata Mexicana*
5:00 p.m. Márquez: "Danzón no. 2"
7:00 p.m. Chávez: "El Trópico"
8:00 p.m. Ponce: *Concierto del Sur*
9:00 p.m. Mendelssohn: Piano Concerto in A Minor

6 Wednesday

9:00 a.m. Mozart: Symphony no. 25 in G Minor
10:00 a.m. Beethoven: Violin Sonata no. 5 in F (*Spring*)
12:00 p.m. Walton: Suite from *Henry V*
2:00 p.m. Grieg: Piano Concerto in A Minor

3:00 p.m. Schubert: Symphony no. 8 in B Minor (*Unfinished*)
7:00 p.m. Bach: *Brandenburg Concerto no. 5 in D*
8:00 p.m. Saint-Saëns: Symphony no. 3 in C Minor (*Organ*)
9:00 p.m. Dvořák: *Serenade in E for Strings*

7 Thursday

8:00 a.m. Tchaikovsky: "Coronation March"
9:00 a.m. Brahms: Symphony no. 2 in D
10:00 a.m. Tchaikovsky: Suite from *Sleeping Beauty*
12:00 p.m. Brahms: *Academic Festival Overture*
2:00 p.m. Tchaikovsky: Symphony no. 6 in B Minor (*Pathétique*)
3:00 p.m. Brahms: Piano Concerto no. 1 in D Minor
6:00 p.m. Tchaikovsky: *1812 Overture*
10:00 p.m. Brahms: Clarinet Quintet in B Minor

8 Friday

8:00 a.m. K. Stamitz: Clarinet Concerto no. 3 in B-flat
9:00 a.m. All-Request Friday
10:00 p.m. Gottschalk: "Falling Leaves"

9 Saturday

7:00 a.m. Schumann: Theme and Variations in E-flat (*Ghost Variations*)
8:00 a.m. Mozart: Piano Concerto no. 20 in D Minor
9:00 a.m. Chopin: *Fantasia* in F Minor
10:00 a.m. Rachmaninoff: *Rhapsody on a Theme of Paganini*
11:00 a.m. Ravel: Piano Concerto in G
12:00 p.m. Weber: "Invitation to the Dance"
1:00 p.m. Metropolitan Opera
4:00 p.m. Beethoven: Piano Sonata no. 8 in C Minor (*Pathétique*)
5:00 p.m. Chopin: Piano Concerto no. 1 in E Minor

10 Sunday

7:00 a.m. Schumann: "Arabeske" in C
9:00 a.m. Bach: Cantata 166 (*Wo Gehest du Hin?*)
10:00 a.m. Gawthrop: *How Beautiful Upon the Mountains*
12:00 p.m. Bach: Partita no. 1 in B-flat
1:00 p.m. Schubert: *Fantasia in C (Wanderer Fantasy)*

2:00 p.m. Beethoven: Piano Sonata no. 14 in C-sharp Minor (*Moonlight*)
3:00 p.m. Rachmaninoff: Piano Concerto no. 3 in D Minor
4:00 p.m. Milhaud: *Scaramouche*, Suite for Two Pianos
5:00 p.m. My Life in Music

11 Monday

9:00 a.m. Liadov: *Polonaise in C*
10:00 a.m. Still: Symphony no. 1 (*Afro-American*)
12:00 p.m. Bach: "Sleepers, Awake!"
2:00 p.m. Liadov: *Eight Russian Folk Songs*
3:00 p.m. Still: *Miniatures* for Oboe, Flute, and Piano
7:00 p.m. Renaissance Fare
8:00 p.m. Dvořák: Symphony no. 8 in G
9:00 p.m. Schumann: Symphony no. 1 in B-flat (*Spring*)
10:00 p.m. Still: *Romance*

12 Tuesday

9:00 a.m. Fauré: *Dolly Suite*
10:00 a.m. Massenet: *Le Carillon*
12:00 p.m. Telemann: *Trumpet Concerto no. 1 in D*
2:00 p.m. Massenet: *Alsatian Scenes*
3:00 p.m. Fauré: Suite from *Masques et Bergamasques*
5:00 p.m. Fauré: "Pavane"
7:00 p.m. Liszt: Piano Concerto no. 1 in E-flat (*Triangle*)
8:00 p.m. Beethoven: Symphony no. 2 in D
9:00 p.m. Fauré: Piano Quartet no. 1 in C Minor

13 Wednesday

8:00 a.m. Sullivan: Overture to *H.M.S. Pinafore*
9:00 a.m. Mozart: Symphony no. 34 in C
10:00 a.m. Debussy: *Prelude to the Afternoon of a Faun*
12:00 p.m. Strauss II: "Accelerations"
2:00 p.m. Wagner: "Forest Murmurs"
3:00 p.m. Sullivan: Incidental Music from Shakespeare's *The Tempest*
7:00 p.m. Sullivan: Cello Concerto in D
8:00 p.m. Bach: Violin Concerto no. 2 in E
9:00 p.m. Mendelssohn: Symphony no. 3 in A Minor (*Scottish*)

14 Thursday

8:00 a.m. Beethoven: *Leonore Overture no. 2*

program listings (may)



Cristina Ortiz b. 1950 (70th birthday)

9:00 a.m. Hummel: Clarinet Quartet in E-flat
10:00 a.m. Schumann: Grand Sonata no. 3 in F Minor
12:00 p.m. Schubert: Impromptu in A-flat
2:00 p.m. Mozart: Symphony no. 31 in D (*Paris*)
3:00 p.m. Dvořák: *The Golden Spinning Wheel*
5:00 p.m. Gottschalk: "The Union"
10:00 p.m. Larsson: *A Winter's Tale*

15 Friday

8:00 a.m. Bach: "Ave Maria"
9:00 a.m. All-Request Friday
10:00 p.m. Corigliano: "Lullaby for Natalie"

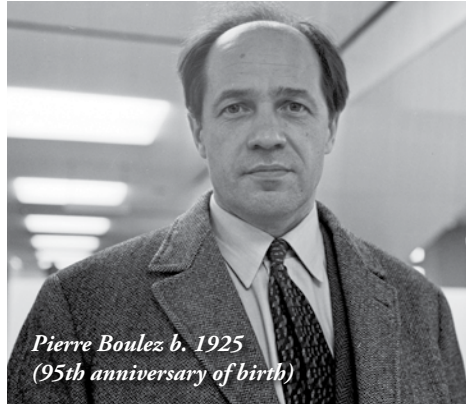
16 Saturday

9:00 a.m. Sousa: "Hail to the Spirit of Liberty"
10:00 a.m. Vaughan Williams: *The Lark Ascending*
11:00 a.m. Rachmaninoff: Piano Concerto no. 2 in C Minor
12:00 p.m. Hayman: "Servicemen on Parade"
2:00 p.m. Schumann: Symphony no. 2 in C
3:00 p.m. Wagner: "Wotan's Farewell" and "Magic Fire Music" from *Die Walküre*
4:00 p.m. Bruch: Violin Concerto no. 1 in G Minor
5:00 p.m. Sousa: "The Stars and Stripes Forever"

17 Sunday

7:00 a.m. Satie: *Gymnopédies* no. 1
9:00 a.m. Bach: Cantata 86 (*Wahrlich, Wahrlich, Ich Sage Euch*)
10:00 a.m. Lloyd Webber: *Requiem*
12:00 p.m. Haydn: *Sinfonia Concertante* in B-flat
1:00 p.m. Mozart: Horn Concerto no. 2 in E-flat

program listings (may)



Pierre Boulez b. 1925
(95th anniversary of birth)

- 2:00 p.m. Debussy: *Suite Bergamasque*
- 3:00 p.m. Satie: "The Dreamy Fish"
- 4:00 p.m. Franck: *Symphonic Variations*
- 5:00 p.m. Renaissance Fare

18 Monday

- 9:00 a.m. Mozart: Piano Concerto no. 27 in B-flat
- 10:00 a.m. Bizet: *Symphony in C*
- 11:00 a.m. Schumann: *Concert Piece in F for Four Horns and Orchestra*
- 12:00 p.m. Offenbach: *Overture to Orpheus in the Underworld*
- 2:00 p.m. Chopin: Piano Concerto no. 2 in F Minor
- 3:00 p.m. Goldmark: *Rustic Wedding Symphony*
- 7:00 p.m. Holst: *Second Suite in F*
- 8:00 p.m. Saint-Saëns: Piano Concerto no. 2 in G Minor
- 9:00 p.m. Debussy: *Images for Orchestra*

19 Tuesday

- 9:00 a.m. Hummel: Trumpet Concerto
- 10:00 a.m. Bizet: *L'Arlésienne Suite no. 1*
- 12:00 p.m. Schubert: *Impromptu in E-flat*
- 2:00 p.m. Haydn: Cello Concerto no. 1 in C
- 3:00 p.m. Tchaikovsky: *Symphony no. 1 in G Minor (Winter Dreams)*
- 7:00 p.m. Wagner: *Overture and "Venusberg Bacchanale" from Tannhäuser*
- 8:00 p.m. Dvořák: *Slavonic Dances, op. 46*
- 9:00 p.m. Beethoven: *Symphony no. 8 in F*
- 10:00 p.m. Debussy: "Isle of Joy"

20 Wednesday

- 9:00 a.m. Rodrigo: *Concierto de Aranjuez*
- 10:00 a.m. Weber: *Overture to Oberon*
- 12:00 p.m. Smetana: *The Moldau*

- 2:00 p.m. Handel: *Suite in F from Water Music*
- 3:00 p.m. Balakirev: *Chopin Suite*
- 7:00 p.m. Schumann: *Scenes from Childhood*
- 8:00 p.m. Brahms: *Violin Concerto in D*
- 9:00 p.m. Wagner: *Siegfried Idyll*
- 10:00 p.m. Mozart: *Rondo in A Minor*

21 Thursday

- 9:00 a.m. Haydn: *Trumpet Concerto in E-flat*
- 10:00 a.m. C.P.E. Bach: *Oboe Concerto in B-flat*
- 12:00 p.m. Dvořák: "Carnival Overture"
- 1:00 p.m. Liszt: *Fantasy on Hungarian Folk Themes*
- 2:00 p.m. Tchaikovsky: *Variations on a Rococo Theme*
- 3:00 p.m. R. Strauss: *Concerto in D for Oboe and Small Orchestra*
- 5:00 p.m. Copland: "An Outdoor Overture"
- 10:00 p.m. Chopin: *Nocturnes, op. 62*

22 Friday

- 8:00 a.m. Wagner: *Prelude to Act 3 of Lohengrin*
- 9:00 a.m. All-Request Friday
- 10:00 p.m. Wagner: *Prelude to Act 1 of Parsifal*

23 Saturday

- 8:00 a.m. Mozart: *Piano Sonata no. 12 in F*
- 9:00 a.m. Chadwick: *Rip Van Winkle Overture*
- 10:00 a.m. Dett: *Magnolia Suite*
- 12:00 p.m. Dvořák: *American Suite*
- 1:00 p.m. Schumann: *Humoreske*
- 2:00 p.m. Grofé: *Grand Canyon Suite*
- 3:00 p.m. O'Connor: *Americana Symphony, Variations on Appalachia Waltz*
- 4:00 p.m. Amram: *Theme and Variations on Red River Valley for Flute and Strings*
- 5:00 p.m. Copland: *Music for Movies*

24 Sunday

- 7:00 a.m. Paulus: "Hymn for America"
- 9:00 a.m. Bach: *Cantata 111 (Was Mein Gott will, das G'scheh Allzeit)*
- 10:00 a.m. Tyberg: *Mass no. 1 in G*
- 12:00 p.m. Chadwick: *Symphonic Sketches*
- 1:00 p.m. Still: *Symphony no. 1 (Afro-American)*
- 2:00 p.m. Gershwin: *Rhapsody in Blue*
- 3:00 p.m. Dvořák: *String Quartet no. 12 in F (American)*
- 4:00 p.m. Copland: *Rodeo*

- 5:00 p.m. Bernstein, arr. Penaforte: *West Side Story Suite for Piano Trio*

25 Monday

- 8:00 a.m. Sousa: "The Stars and Stripes Forever"
- 9:00 a.m. Copland: *Appalachian Spring*
- 10:00 a.m. Dvořák: *Symphony no. 9 in E Minor (From the New World)*
- 11:00 a.m. Williams: "Hymn to the Fallen" from *Saving Private Ryan*
- 12:00 p.m. Sousa: "Semper Fidelis"
- 2:00 p.m. Paine: *Symphony no. 1 in C Minor*
- 3:00 p.m. "Taps" and "America the Beautiful"
- 4:00 p.m. Williams: "Summon the Heroes"
- 7:00 p.m. Gershwin: *An American in Paris*
- 8:00 p.m. Hanson: *Symphony no. 2 (Romantic)*
- 9:00 p.m. Hayman: "Servicemen on Parade"
- 10:00 p.m. Keller: "Hymn of Peace"

26 Tuesday

- 9:00 a.m. Brahms: *Serenade no. 1 in D*
- 10:00 a.m. Chopin: *Piano Sonata no. 3 in B Minor*
- 12:00 p.m. Bach: "Jesu, Joy of Man's Desiring"
- 2:00 p.m. Haydn: *Symphony no. 85 in B-flat (The Queen)*
- 3:00 p.m. Ravel: *Noble and Sentimental Waltzes*
- 7:00 p.m. Bach: *Orchestral Suite no. 2 in B Minor*
- 8:00 p.m. Mendelssohn: *Symphony no. 4 in A (Italian)*
- 9:00 p.m. Beethoven: *Piano Sonata no. 23 in F Minor (Appassionata)*

27 Wednesday

- 9:00 a.m. Handel: *Suite from Il Pastor Fido*
- 10:00 a.m. Bruch: *Scottish Fantasy for Violin and Orchestra*
- 12:00 p.m. Vivaldi: *Trumpet Concerto in B-flat*
- 2:00 p.m. Grieg: *Holberg Suite*
- 3:00 p.m. Raff: *From Thuringia*
- 7:00 p.m. Dvořák: *Othello*
- 8:00 p.m. Rimsky-Korsakov: *Suite from The Tale of Tsar Saltan*
- 9:00 p.m. Mozart: *Symphony no. 36 in C (Linz)*

28 Thursday

- 9:00 a.m. Rossini: *Overture to Semiramide*
- 10:00 a.m. Balakirev: *Symphony no. 1 in C*
- 12:00 p.m. Schubert: "The Erl-King"
- 1:00 p.m. J. Stamitz: *Trumpet Concerto in D*
- 2:00 p.m. Mozart: *Clarinet Quintet in A*
- 3:00 p.m. Beethoven: *Symphony no. 6 in F (Pastoral)*
- 5:00 p.m. Mendelssohn: *Overture to A Midsummer Night's Dream*
- 10:00 p.m. Schubert: "The Passing Bell"

29 Friday

- 8:00 a.m. Mussorgsky: "Dance of the Persian Slaves" from *Khovanshchina*
- 9:00 a.m. All-Request Friday
- 10:00 p.m. Albéniz: *Three Selections from Suite Española*

30 Saturday

- 9:00 a.m. C.P.E. Bach: *Cello Concerto in B-flat*
- 10:00 a.m. Schumann: *Symphony no. 3 in E-flat, op. 97 (Rhenish)*
- 12:00 p.m. Gershwin: *Lullaby for Strings*
- 1:00 p.m. Dvořák: *In Nature's Realm*
- 2:00 p.m. Rachmaninoff: *Piano Concerto no. 4 in G Minor*
- 3:00 p.m. Rimsky-Korsakov: "Procession of the Nobles" from *Mlada*
- 4:00 p.m. Brahms: *Symphony no. 2 in D*
- 5:00 p.m. Mozart: *Violin Concerto no. 3 in G*

31 Sunday

- 7:00 a.m. Thompson: "Alleluia"
- 9:00 a.m. Bach: *Cantata 74 (Wer Mich Liebet, der Wird Mein Wort Halten)*
- 10:00 a.m. Brahms: *A German Requiem*
- 12:00 p.m. Farrenc: *Clarinet Trio in E-flat*
- 1:00 p.m. Haydn: *Symphony no. 94 in G (Surprise)*
- 2:00 p.m. Brahms: *Symphony no. 3 in F*
- 3:00 p.m. Grieg: *Lyric Suite*
- 4:00 p.m. Farrenc: *Piano Quintet no. 2 in E*
- 5:00 p.m. Marais: "The Bells of St. Genevieve"

Were you a first-time donor in the spring of 2019? Don't forget to renew your donation in 2020! Or, why not become a sustainer and have the same amount automatically debited every month?

Mozart in Paris

By Frantz Duchazeau

SelfMadeHero, 94 pages

A review by R.C. Speck

Historical graphic novels can be evocative conduits to the past. Comic artist and writer Frantz Duchazeau gives us just this with his wonderful graphic novel *Mozart in Paris*. Translated to English in 2019, *Mozart in Paris* tells the story of the six months Mozart spent in the French capital with his mother when he was twenty-two.

Disillusioned with his employment in Salzburg, young Mozart had high hopes in Paris, which he hadn't visited since his days as a child prodigy. Baron von Grimm introduces him to high society in Paris, but Mozart quickly learns that his music does not suit Parisian tastes very well. He also finds that his lack of social refinement has become an impediment to his success. He becomes caught up in the political strife of the French music world—making perhaps more enemies than friends—all the while eking out a living on small commissions and lessons. Duchazeau also chronicles how Mozart had to deal with his mother's failing health as well as his crush on Aloisia Weber in far-away Munich.

Duchazeau compiled much of his narrative through Mozart's correspondences with his family, giving the graphic novel an epistolary feel as the narration often quotes directly from letters and covers the bitter disagreements the young composer had with his father Leopold back in Salzburg. Duchazeau includes all the love and longing as well, and through Mozart's letters, reveals exactly how unstable and treacherous the life of a young musical genius could be back then.

Duchazeau also makes his story a period piece in every sense of the word. From the fashions to the furniture to the architecture,



he puts late-eighteenth century Paris on display on every page. He treats us to exquisitely drawn views of its busy streets, its gardens, its estates, its waterways. He renders lighting and shadow impeccably as well. This visual depiction is one of the advantages of graphic novels over literature, and Duchazeau makes the most of it in *Mozart in Paris*.

Most strikingly, Duchazeau gives us a glimpse of what was going through Mozart's mind with what I would call psychological license. Along with flashbacks to Mozart as a young prodigy, Duchazeau often invites that same prodigy to the present to reflect on the life of Mozart the man. Duchazeau presents images of Leopold towering over the city to emphasize his gigantic influence over his son. Mozart's genius is also depicted graphically. When composing or playing music, his boundless creativity often finds representation in flashes of geometric forms in peculiar coloring.

Mozart in Paris is unique in that it seems to be as much about Paris as it is about Mozart. And through the medium of the graphic novel, Duchazeau makes both equally fascinating. ♪

Listen to Great Classical Music 24-7 by streaming at TheClassicalStation.org!

By Dan McHugh

Instrument Donation Program

The Classical Station is excited to announce that we are expanding the Education Fund to include an instrument donation program! The purpose is to make donated instruments available to students in music education programs and nonprofit organizations in North Carolina.

Over the last ten years, the Education Fund has awarded more than \$80,000 in grants to numerous music education nonprofits in North Carolina. In addition to grants that support music lessons, concerts, and scholarships, we hope that the instrument donation program will help even more students to

realize their dreams of studying music. You can help to make their dreams come true, and receive a tax receipt.

Gently used instruments in working condition, or with minor repairs needed, are being accepted. We are especially interested in trumpets, flutes, clarinets, French horns, trombones, violins, violas, cellos, and saxophones and accept other Classical instruments for band or orchestra.

For more information about the Education Fund, or to inquire about donating your instrument, please contact Dan McHugh, Membership Director, at 919.556.5178 or by e-mail at dan@theclassicalstation.org. Arrangements for pickup will be made on a case-by-case basis. ♪

Primarily Piano Weekend

By Nan Pincus

Lara Downes, best known as a master interpreter of American melodies, is also a European-trained pianist with expressive enunciation of Classical masterpieces. Her 2019 album *For Love of You: Clara and Robert Schumann* was a standout of the year, illuminating a creative and romantic partnership that has fascinated listeners of Classical music for generations through nuanced performances of Clara Schumann's *Three Romances* and Robert Schumann's Piano Concerto in A Minor and *Fantasiestücke*.

During this year's Primarily Piano Weekend, we will feature Lara Downes's *For Love of You* and her 2020 series *Florence Price: Piano Discoveries*, which follows from her celebrated 2016 recording of Price's "Fantasie Nègre" no. 1. The weekend will also include other contemporary pianists and their new releases such as Angela Hewitt's *Bach: The Six Partitas* and George Li's *Tchaikovsky: Piano Concerto no. 1 and Liszt: Works for Solo Piano*.

We will also hear the virtuosic playing of some of history's greatest pianists, such as Glenn Gould, Sviatoslav Richter, Martha Argerich, Van Cliburn, and Alicia de Larrocha, whose work inspired today's musicians. ♪



Lara Downes



Angela Hewitt

WCPE salutes its business partners! These public-spirited companies, organizations, and individuals have joined the friends of WCPE in supporting Great Classical Music.

Alamance Artisans Guild
alamanceartisans.com

**American Guild of Organists
Central NC Chapter**
P.O. Box 2512
Raleigh, NC 27602
cnccago.org

Carolina Ballet
3401-131 Atlantic Ave.
Raleigh, NC 27604
919.719.0800
carolinaballet.com

Carolina Performing Arts
Fulfilling UNC-Chapel Hill's commitment to the arts since 2005
Box office: 919.843.3333
carolinaperformingarts.org

Cary Skin Center
Offering comprehensive services through its Skin Cancer Center and Aesthetic Surgery and Laser Center
At the corner of NC 55 and High House Rd.
Cary, NC 27519
919.363.7546
caryskincenter.com

**CenterFest Arts Festival/
Durham Arts Council**
centerfest.durhamarts.org

Chamber Music of Raleigh
P.O. Box 2059
Raleigh, NC 27602
chambermusicraleigh.org

**Chamber Orchestra of
the Triangle**
309 W. Morgan St.
Durham, NC 27701
chamberorchestraofthetriangle.org

Chamblee Graphics
Printer of WCPE's Quarter Notes
1300 Hodges St.
Raleigh, NC 27604
919.833.7561

Chapel Hill Piano Salon
chapelhillpianosalon.com

Choral Society of Durham
120 Morris St.
Durham, NC 27701
919.560.2733
choral-society.org

**Christ Episcopal Church
Concert Series**
102 Edenton St.
Raleigh, NC 27601

Christ the King Lutheran Church
600 Walnut St.
Cary, NC 27511
919.467.8989
christthekingcary.org

Clayton Piano Festiva
claytonpianofestival.org

Cumberland Choral Society
cumberlandchoralsociety.org

Duke Performances
2010 Campus Dr., Box 90757
Durham, NC 27708
919.660.3356
dukeperformances.duke.edu

Duke University, Chapel Music
P.O. 90883
Durham, NC 27708
919.684.3855
www.chapel.duke.edu/music.html

Duke University, Dept. of Music
Box 90665
Durham, NC 27708
919.660.3300
music.duke.edu

Durham Medical Orchestra
dmomusic.org

Durham Savoyards
120 Morris St.
Durham NC 27701
durhamsavoyards.org

Eastern Music Festival
200 N. Davie Street Suite 11
Greensboro, NC 27401
336.333.7450
easternmusicfestival.org

**Episcopal Church of the
Good Shepherd**
121 Hillsborough St.
Raleigh, NC 27603
919.831.2000
cgs-raleigh.org

First Presbyterian Church
305 E. Main St.
Durham, NC 27701
919.682.5511
firstpres-durham.org

Forgotten Clefs
forgottenclefs.org

**Gay Gasper Estate Sales
& Appraisals**
919.824.3665
gaygasperstatesales.com

Greensboro Symphony
200 N. Davie St., Suite 301
Greensboro, NC 27401
336.335.5456
greensborosymphony.org

**Halle Cultural Arts Center
of Apex**
P.O. Box 250
237 N. Salem St.
Apex, NC 27502
919.249.1120
thehalle.org

Hamilton Hill Jewelry
905 W. Main St.
Durham, NC 27701
919.683.1474
hamiltonhilljewelry.com

Tom Keith & Associates, Inc.
Serving the Carolinas for over 46 years in the valuation of corporations, partnerships, professional practices, and sole proprietorships
121 S. Cool Spring St.
Fayetteville, NC 28301
910.323.3222
keithvaluation.com

**McGregor Hall Performing
Arts Center**
201 Breckenridge St.
Henderson, NC
mcgregorhall.org

North Carolina Museum of Art
2110 Blue Ridge Rd.
Raleigh, NC 27607
919.839.6262
ncartmuseum.org

North Carolina Opera
612 Wade Ave. Suite 100
Raleigh, NC 27605
919.792.3850
ncopera.org

North Carolina Symphony
3700 Glenwood Ave. Suite 130
Raleigh, NC 27612
919.733.2750
ncsymphony.org

Paderewski Festival of Raleigh
Dr. Alvin M. Fountain of Raleigh,
organizer
103 Birkhaven Dr.
Cary, NC 27518-8942

Raleigh Community Orchestra
6339 Glenwood Ave.
Raleigh, NC 27612
919.807.1487
raleighcommunityorchestra.org

Raleigh Symphony Orchestra
2424 Wycliff Rd. Suite 102A
Raleigh, NC 27607
919.546.9755
raleighsymphony.org

Red Oak Brewery
6901 Konica Dr.
Whitsett, NC 27377
redoakbrewery.com

Keith Robertson
9121 Anson Way Suite 200
Raleigh, NC 27615
919.258.2984
keithrobertson-ea.com

The Rose Ensemble
roseensemble.org

St. Michael's Episcopal Church
1520 Canterbury Rd.
Raleigh, NC 27608
919.782.0731
holymichael.org

Triangle Strings
4911 Water Edge Dr. #200A
Raleigh, NC 27606
trianglestrings.com

Triangle Wind Ensemble
P.O. Box 701
Cary, NC 27512
919.960.1893
trianglewind.org

UNC Honors
106 Stadium Dr.
Chapel Hill, NC 27514
honorscarolina.unc.edu

Vocal Arts Ensemble of Durham
Box 90665
Duke University
Durham, NC 27708
919.660.3302
vocalartsensemble.org

Wake Radiology
Over 60 years of comprehensive radiology care and advanced imaging for your family
3949 Browning Pl.
Raleigh, NC 27609
919.232.4700
wakerad.com

Women's Voices Chorus
P. O. Box 2854
Chapel Hill, NC 27515
womensvoiceschorus.org

Classical Events* and Promotional Partners

27587 Magazine
27587magazine.com

Artsposure
artsposure.org

Cameron Village
shopcameronvillage.com

Carolina Ballet
carolinaballet.com

Chamber Music Raleigh
chambermusicraleigh.org

Chamber Orchestra of the Triangle
chamberorchestraofthetriangle.org

Community Music School of Raleigh
cmsraleigh.org

Duke Chapel Music
chapel.duke.edu

Louisburg College
louisburg.edu

Mallarmé Chamber Players
mallarmemusic.org

North Carolina Bach Festival
ncbachfestival.org

***North Carolina Opera**
ncopera.org

***North Carolina Symphony**
ncsymphony.org

Paderewski Festival
paderewski-festival.org

***Quail Ridge Bookstore**
quailridgebooks.com

Shenandoah Bach Festival
svbachfestival.org

**St. Catherine of Sienna and The Knights of
Columbus Charity Golf Tournament**

***Wake Forest Chamber of Commerce**
wakeforestchamber.org

Women's Voice Chorus
womensvoicechorus.org

For information on becoming a business partner, contact development@theclassicalstation.org.

What You're Saying



"Music gives wings to the mind," according to Plato. I'm becoming increasingly aware of the increasing importance of music in multiple therapies. *(Barbara from listener survey)*

I have been listening since I moved to the Raleigh area three years ago and wanted to show my appreciation. Wonderful music, and my three kids (16, 19, 21) like it as well. Thanks! *(Carl in Raleigh, NC)*

How many times have I had to stay in my car and finish listening to something beautiful I was hearing on WCPE? I could not possibly say. Often have I checked your playlist so that I could purchase what had just brightened my day. *(Christina in Raleigh)*

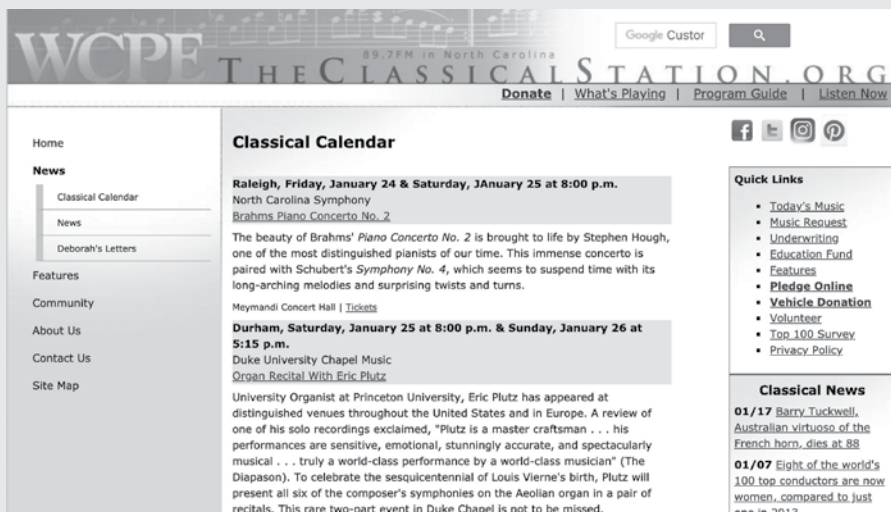
I especially like your special programming, including Renaissance Fare, My Life in Music, and the modern Classical music that you play on Sunday evenings. *(McCormick/Peifer from listener survey)*

Great music—a joy to listen to while working. *(Kathy on our Facebook page)*

I love to hear what people request. There are few stations that play any—and fewer still that play such a wide, rich variety—rather than the same "top 40" Classical hits. I'm a member; I belong and I share this station. *(Anonymous from listener survey)*

I wake to WCPE every morning, and it is a tranquil, beautiful way to start every day. *(Francine from listener survey)*

Did you ever hear about a great upcoming performance but miss the event details? Bookmark our Classical Calendar! You can find information about the events you learn about on WCPE, as well as free Classical concerts, events, and lectures, in the News section at TheClassicalStation.org.



WCPE is licensed by the Federal Communications Commission to broadcast on 89.7MHz with 100,000 watts.

WCPE programming is carried on the following FM channels in North Carolina and Virginia:

- W202BQ on 88.3 MHz (Aberdeen, Pinehurst, Southern Pines)
- W205CA on 88.9 MHz (Foxfire Village)
- W210BS on 89.9 MHz (New Bern)
- WZPE on 90.1 MHz (Bath)
- WURI on 90.9 MHz (Manteo)
- W216BE on 91.1 MHz (Buxton)
- W237CM on 95.3 MHz (Fayetteville)
- W247BG on 97.3 MHz (Greenville)
- W275AW on 102.9 MHz (Danville, VA)
- W292DF on 106.3 MHz (Martinsville, VA)

WCPE programming is carried on partner stations across America listed at: theclassicalstation.org/partners.shtml.

WCPE programming is carried on cable systems across America listed at: theclassicalstation.org/cable.shtml.

WCPE streams on the Internet in Windows Media, aac, MP3, and Ogg Vorbis at: theclassicalstation.org/internet.shtml.

WCPE streams on the Internet to IOS and Android smartphone apps.

WCPE grants blanket permission to retransmit and rebroadcast its programming in real time without charge or royalty to WCPE, to any entity that may legally disseminate programming to the general public. This permission includes AM, FM, and television stations and translators; cable TV systems; closed-circuit TV systems; common carriers; direct-broadcast satellite systems; Internet service providers and audio services; multipoint distribution systems; pay-TV systems; subscription TV systems; satellite master antenna TV systems; and similar licensed or authorized entities.

It is a violation of law to record copyrighted music or performances without authorization; please use WCPE's programs and services properly.

Let Me Help!

Fill out this form and send it to WCPE.
Thank you for your support!

name

address

city

state

zip

telephone

Yes! I want to support WCPE with a:

single donation or monthly donation of:

\$10 \$25 \$50 \$100

\$250 \$500 Other \$_____

I would like to use my gift of \$300 or more as an Angel Challenge.

Please use:

My full name My first name & city

I would like to be contacted about leaving WCPE in my estate plans.

My check is enclosed, or

Please charge to my:

Visa MasterCard

AmEx Discover

card number

print your name as it appears on your card

expiration date

signature

I want to be a WCPE volunteer.

My matching gift employer is:

Please mail to:

WCPE
PO Box 828
Wake Forest, NC 27588

WCPE
P.O. Box 828
Wake Forest, NC 27588
ELECTRONIC SERVICE REQUESTED

Dated material—do not delay

PLEASE NOTE:
Don't forget to renew your WCPE membership before the date shown below.

Non-Profit Org.
US Postage
PAID
Permit No. 1348
Raleigh, NC

photo: Simon Fowler



*Celebrate Primarily Piano
May 9–10*

George Li is one of the artists we will feature during this weekend. See page 29 for more details.

89.7  WCPE
Great Classical Music, 24 Hours A Day