

December • January • February

Quarter Notes

WCPE Radio, The Classical Station • Winter 2022-23



Beethoven for Three
Symphonies for the Soul
Metropolitan Opera Productions
Black History Month

WCPE Daily Schedule

Weekdays	
12:00 midnight	<i>Sleepers, Awake</i> with Sherman Wallace
5:30 a.m.	<i>Rise and Shine</i> with Emily Moss
10:00 a.m.	<i>Classical Café</i> with Nick Robinson
Fridays	All-Request Friday
1:00 p.m.	<i>As You Like It</i> with Naomi Lambert and Joyce Kidd
4:00 p.m.	<i>Allegro</i> with Dick Storck
5:30 p.m.	5:30 waltz
7:00 p.m.	Mondays through Wednesdays and Fridays: <i>Concert Hall</i> with Andy Huber, Larry Hedlund, Bruce Matheny, Mark Schreiner, Tony Waller, Mike Huber and a variety of hosts Thursdays: <i>Thursday Night Opera House</i> with Dr. Jay Pierson
8:00 p.m.	Mondays: <i>Monday Night at the Symphony</i> with Andy Huber, Tony Waller and a variety of hosts
10:00 p.m.	<i>Musical in the Night</i> with Dr. Jay Pierson, Tony Waller, Mike Huber, Bo Degnan, and a variety of hosts
Saturdays	
12:00 midnight	<i>Sleepers, Awake</i> with Dane Bryant Frazier
6:00 a.m.	<i>Weekend Classics</i> with Tanja Greaves, Helen Halva, Peggy Powell, Joyce Kidd, and a variety of volunteer hosts
6:00 p.m.	<i>Saturday Evening Request Program</i> with Haydn Jones
Sundays	
12:00	<i>Sleepers, Awake</i> with Dane Bryant Frazier
6:00 a.m.	<i>Weekend Classics</i> with Chuck Till and a variety of volunteer hosts
7:30 a.m.	<i>Sing for Joy</i> with The Rev. Alexandra M. Jacob
8:00 a.m.	<i>Great Sacred Music</i> with Rob Kennedy
12:00 p.m.	<i>Weekend Classics</i> with Greysolynne Hyman, Bruce Huffine, Jon Bailey, Tanya Leigh, and volunteer hosts
6:00 p.m.	<i>Preview</i> with Dan Poirier and a variety of hosts
9:00 p.m.	<i>Wavelengths</i> with Ed Amend
10:00 p.m.	<i>Peaceful Reflections</i> with Ed Amend

Quarter Notes®

WCPE's member magazine
Vol. 44, no. 4

The mission of WCPE (TheClassicalStation.org) is to expand the community of classical music lovers by sharing classical music with everyone, everywhere, at any time. We entertain, educate, and engage our audience with informative announcers, programs, and publications. We strive to make it easy to appreciate and enjoy Great Classical Music.

Editor: Bethany Tillerson
Designer: Kevin Dickerson
Printer: Joseph C. Woodard Printing Company

WCPE Staff

Deborah S. Proctor General Manager & Chief Engineer
Gregg Cockroft Facilities Engineer
Adrienne DiFranco Accounting/Member Services
Gloria Dunn Accounting
Isaac Duque Audio Production
Caleb Gardner Music Director
John Graham Director of Engineering
Tanja Greaves Volunteer and Donor Benefits Director*
Mike Huber Announcer
Bruce Huffine Announcer
Greysolynne Hyman Announcer
Haydn Jones Announcer
Rob Kennedy Host of *Great Sacred Music*; Digital Content Creator
Joyce Kidd Announcer
Naomi Lambert Assistant Music Director; Host of *As You Like It*
Dan McHugh Director of Membership and Donor Engagement*
Mary Moonen Business and Underwriting Development Director; Traffic Manager
Emily Moss Announcer
Susan Nunn Member Services; Web Team Coordinator
Stu Pattison Data Services
Dale Pendleton Engineer
Jay Pierson Host of *Thursday Night Opera House*
Peggy Powell Music Department Associate; Announcer
Nick Robinson Announcer
Dick Storck Program Director*
Bethany Tillerson *Quarter Notes* Editor; Social Media Coordinator
Sherman Wallace Host of *Sleepers Awake*
Tony Waller Announcer
*This staff member is also an announcer.

©Copyright 1978–2023, WCPE Radio, Raleigh, NC. All rights reserved. All material published or disseminated by WCPE, The Classical Station, except those owned or copyrighted by another entity, is copyrighted by WCPE at the date of publication.

Allegro; As You Like It; Classical Café; Quarter Notes; Rise and Shine; Sleepers, Awake!; and *WCPE* are registered or pending trademarks or service marks of WCPE.

WCPE
P.O. Box 828
Wake Forest, NC 27588
800-556-5178

Membership: membership@TheClassicalStation.org
Website: TheClassicalStation.org

table of contents

Meet Your Host – Emily Moss



How long have you been an announcer at WCPE, and what attracted you to The Classical Station? I have been announcing since May 2022. I wanted to work at The Classical Station because I have always been fascinated by the lives of composers. I found the virtual art gallery featured on the website and was moved by the sense of community the station has with its listeners.

What is your favorite genre of music? Who are some of your favorite composers and artists? I love the Romantic Era of classical music—I love the emotional depth and bombastic volatility of Rachmaninoff and Tchaikovsky. My favorite modern composer is Yann Tiersen.

Do you have a background in music performance? I studied piano performance and sang alto in my university's competitive choir. Our choir toured England performing Benjamin Britten's *5 Flower Songs* and sang in Westminster Abbey. Being a solo pianist all my life, my experience of music was transcended when I joined forces with other musicians.

Have you seen any performances around the world that stand out in your memory? I saw Itzhak Perlman perform Max Bruch's Violin Concerto no. 1 and I was never the same. His earnest humanity and kindness shone through in his playing.

Meet Your Host	1
Home Sweet Home	2
Program Notes.....	3
Winter Highlights.....	6
Mondays This Quarter	
<i>My Life in Music, Renaissance Fare</i>	8
<i>Monday Night at the Symphony</i>	9
Opera House	10
Sundays This Quarter	
<i>Great Sacred Music</i>	11
<i>Preview</i>	12
<i>Wavelengths and Peaceful Reflections</i>	13
Met Broadcast Schedule.....	14
Program Listings.....	15
Thank You Gifts.....	27
Lately We've Heard	
<i>Beethoven for Three</i>	
<i>Reviewed by Bethany Tillerson</i>	28
Lately We've Read	
<i>Symphonies for the Soul: Classical Music to Cure any Ailment</i>	
<i>Reviewed by Greysolynne Hyman</i>	29
Classical Community.....	30
Classical Events and Promotional Partners	31
Donor Spotlight.....	32
What You're Saying	32

On the cover:

Yo-Yo Ma, Emanuel Ax &
Leonidas Kavakos
Photo: Nigel Parry

Is there anything else your listeners might enjoy knowing about you? I create my own art using rope in a style called macrame. I am inspired by nature, music, and divinity. My art can be seen at landofluna.org.



home sweet home

Home, Sweet Home

I want to thank you for supporting WCPE Radio (theclassicalstation.org). Without your generous gifts, we would not be able to continue our round-the-clock broadcasts. This is especially true for our online listeners and those who listen to our mini-transmitters.

December is a special month for many people. Christmas and Chanukah are coming up, symbolizing recognition and giving gifts to family members and close friends. I hope you will consider WCPE Radio to be a part of your family and ask that you remember our station in December.

This year is like any year—our expenses go up just as yours do, and we have to meet these expenses. We share our programming without cost or obligation to many cable and public radio stations across the country. You can listen for free on the App, on Alexa, and on the website. We believe that *Great Classical Music* is a treasure and gift which is important to preserve and protect.

This station is unique; we do not have a university, municipality, or government agency to fall back upon during difficult times. We have to depend on you. We are truly a community radio station, because members of each community we serve take the time and effort to help us financially, like local business owners who believe this station is important and worthy of their support.

We are blessed to be able to operate with a 100,000-watt transmitter, which is the highest broadcast power allowed in the United States for an FM station. We also have mini-transmitters in cities where our signal weakens after 75 or 90 miles, we have partner stations rebroadcasting our music, and we have many listeners across the country via TheClassicalStation.org. There is no other radio station in the country that operates a high-power station that has been fortunate enough to have had a quarter-mile-tall tower donated to it. We have many broadcast options that bring you Great Classical Music around the clock, every day of the year.



Deborah Proctor
General Manager

Many people wait until December to make their donations to non-profit organizations that they support. So I ask you to consider a December gift to WCPE Radio wherever you are—whether listening in central North Carolina and Southside Virginia on the radio, online at TheClassicalStation.org, on our App, or on one of our many Partner Stations around the country.

You can donate gifts of stock or make a Qualified Charitable Distribution from your IRA. Your tax deductible charitable gifts can help you this coming April. The same goes for that old car or truck that you never use anymore. Wherever you live in the U.S., we can have someone pick it up for donation, and you'll get a donation verification in return for your generosity. For more information on how to give, please visit TheClassicalStation.org.

Thank you for supporting this beautiful music and the stations and the people who bring it to you. From all of us here at WCPE Radio, we'll do our best to bring you *Great Classical Music* throughout the coming year, and it will all be because you took the time to give us your financial support!

Thank you!

Deborah

December 8th Jean Sibelius

10 a.m. Symphony no. 5 in E-flat, op. 82

In Sibelius's own words: "It is as if God Almighty had thrown down pieces of a mosaic from heaven's floor and asked me to find out what was the original pattern." The Fifth symphony's final movement has sustained an enormous amount of scholarly analysis. Most listeners instinctively grasp that its power is found in Sibelius' use of soaring melodies and grand horn motifs, and the six memorable, suspenseful chords that end it.

December 10th Kathryn Stott

7 a.m. *Londonderry Air* (arr. Fritz Kreisler)

12 p.m. Kabalevsky: Second Concerto in G Minor for Piano and Orchestra

British pianist Kathryn Stott is a brilliant performer as well as a renowned accompanist. Her partnerships with Yo-Yo Ma, Christian Poltera, and Nigel Kennedy have resulted in many successful concert series and recordings. Listen for her duet with cellist Yo-Yo Ma and her performance of Kabalevsky's Piano Concerto no. 2.

December 11th Hector Berlioz

2 p.m. *Symphonie Fantastique*

Berlioz sketched out his musical ideas on the guitar; his works puzzled his teachers, and his compatriot Debussy called him "a monster...not a musician at all." Time has canonized Berlioz as one of the greatest composers of all time, yet the unique nature of his music continues to confound. The *Symphonie Fantastique*, with its unusual harmonies, odd textures, and rule-breaking form, demonstrates all that is best loved about his music.

Listen to Great Classical Music 24/7 by streaming at TheClassicalStation.org!



December 13th Ludwig Van Beethoven

7 p.m. Symphony no. 3 in E-flat, op. 55 (*Eroica*)

Symphony no. 3, nicknamed "Eroica", was originally dedicated to Napoleon Bonaparte, but its cultural influence would outlast the Emperor. By daring to use music as a vehicle for such striking emotional expression, and by embodying the principle of the individual above all, Beethoven emancipated the artist and gave birth to the Romantic Era.

December 17th Arthur Fiedler

7 a.m. Camille Saint-Saëns: *Danse Macabre* op. 40

Arthur Fiedler was an orchestral musician before he became the famed conductor of the Boston Pops. Throughout his 50 years as music director, Fiedler recorded more albums than any other orchestra and introduced classical music to countless Americans. Fiedler's legacy endures today with the thriving Boston Pops.

program notes

December 31st Jennifer Higdon

9 a.m. *Concerto 4-3*

Higdon transported her audience to the metropolis with her composition *City Scape*. In contrast, her new work *Concerto 4-3* uses music to evoke the rural settings of her native Tennessee. The group Time For Three, for whom the work was written, serves as the soloist and are supported by a full orchestra and chorus. *Concerto 4-3* is undoubtedly an exciting, propellant piece, but tucked away in its quiet moments is a sense of gentle nostalgia and contentment found in the settings that inspired it.

January 6th Max Bruch

9 a.m. Violin Concerto no. 1 in G Minor, op. 26

Violin soloist Ray Chen deftly manages the demands of Max Bruch's Violin Concerto in the London Symphony Orchestra's recording of Bruch's most famous work. Soaring lyricism, aggressive double-stops, and virtuosic cadenzas are balanced by orchestral writing equally gentle and grand. Though Bruch became tired of its popularity, audiences the world over are still receptive to its power and charm.

January 15th Peter Tchaikovsky

2 p.m.: Symphony no. 6 in B Minor, op. 74 (*Pathétique*)

Tchaikovsky died shortly after the premiere of the Sixth Symphony, which is among the greatest of symphonic works. Some writers seized upon his timing and labeled the "Pathétique" his swan song. Whatever the composer's intent, the result was a work brimming with life and energy. The first movement, which grows from meditative chords to bright lyrical outbursts before returning again, parallels the journey from birth to death.



photo: J. Henry Fair

Jennifer Higdon

January 19th Sir Simon Rattle

10 a.m. Beethoven: Piano Concerto no. 2 in B-flat, op. 19

Sir Simon Rattle emerged as someone to watch at age 25 when he was appointed principal conductor of the City of Birmingham Symphony Orchestra in 1980. Through his roles at the Berlin Philharmonic and the London Symphony Orchestra, he became a champion of 20th-century composers.

January 25th Wolfgang Amadeus Mozart

7 p.m. Symphony 40 in G Minor K. 550

Many of Mozart's works have become so ubiquitous that they barely register as music written by a living, breathing person. The first few bars of the 40th Symphony feature a melody so sublime and recognizable, existing so naturally, that it becomes difficult to remember when and where one first heard it.

WCPE derives its income from listener donations and grants from foundations and businesses. Donate by going to TheClassicalStation.org or calling 800-556-5178.



photo: Cheryl Gorski

JoAnn Falletta

January 31st Ofra Harnoy

11 a.m. Corelli: Cello Sonata in D Minor, op. 5, no. 8

Canadian cellist Ofra Harnoy premiered many concerti during her career, including both Offenbach's and Viotti's cello concertos. She is known for her numerous recordings and extensive touring. Read our interview with Ms. Harnoy on our website under 'Conversations.'

February 2nd Paul O'Dette

9 a.m. Milano: Three Fantasias for Lute

Originally a guitarist in a rock band, Paul O'Dette became intrigued by the lute and now specializes in performing Early Music. He is actively involved in historically informed performance, which finds its inspiration in original instruments and sources. Mr. O'Dette is Professor of Lute at the Eastman School of Music.

February 3rd Felix Mendelssohn

9 a.m. Violin Concerto in E Minor op. 64

Mendelssohn's great violin concerto begins with such assurance and force that the 1st movement seems to drop us *in medias res*. What follows is a brilliant blend of soloist and orchestra, racing to a solo cadenza. Delicately, violinist Itzhak Perlman builds

toward the rapid arpeggio which signals the return of the orchestra and the main theme.

February 21st Andrés Segovia

9 a.m. Bach: Minuet I and II from Cello Suite no. 1 in G, BWV 1007

Spanish guitarist Andrés Segovia was a brilliant performer and a proponent of the guitar as a serious classical instrument that deserved a place in the conservatoire. Now, most collegiate music programs include a guitar program, and guitar works are a regular part of classical performances everywhere. In one way or another, anyone who plays or enjoys classical guitar today owes Segovia a debt of gratitude.

February 27th JoAnn Falletta

11 a.m. Paine: *Poseidon and Amphitrite*, op. 44 (*An Ocean Fantasy*)

JoAnn Falletta is best known as the first female Music Director of the Buffalo Philharmonic. She is also a GRAMMY Award-winning recording artist, most recently winning the 2021 Award for Best Choral Performance. Notably, she 'discovered' the lost compositions of Austrian composer Marcel Tyberg. Find our interview with Ms. Falletta on our website under 'Conversations'.

winter highlights

December 10th

Metropolitan Opera

The Classical Station's broadcast of the Metropolitan Opera's 2022–23 season opens with a presentation of Kevin Puts' *The Hours*. Enjoy the Met each Saturday afternoon at 1:00 p.m. from the comfort of your own home, online, on the radio, or on The Classical Station's app.

December 12th-16th

Celebration: Ludwig van Beethoven

Ludwig van Beethoven remains the world's most widely celebrated composer. The Classical Station celebrates Beethoven with five days of selections. A set of pieces each morning will chronicle his journey from classical master to titan of individual expression. Each night, enjoy one of five symphonies, culminating with the Ninth—perhaps the greatest achievement in the history of music.

December 18th

Chanukah

Come spin the dreidel, light the candles, and enjoy the music of Chanukah at 6:00 p.m. eastern on December 18. Sacred and folk music will also be featured during the eight-day Jewish Festival of Lights through December 26.

December 21st

Winter's Grip

Few popular classical composers were familiar with the comfort of climate control and electrical lighting. On the shortest day of the year, spend some time enjoying a selection of pieces - by Tchaikovsky, Vivaldi, Grieg, and others - that remind us of both the beauty and hardship of the winter months.

December 25th

Christmas

Please join us as we anticipate and celebrate Christmas at The Classical Station. Special programs will include *Lullabies and Carols* selected by the host of *Great Sacred Music*, Rob Kennedy, as well as a holiday edition of *Renaissance Fare* by host George Douglas. Don't miss your opportunity to choose your favorite Christmas music with our Christmas Eve Special Request Program. Enjoy Christmas morning with beautiful selections on *Great Sacred Music*.

December 31st

New Year's Eve (Saturday Evening Request)

Ring in New Year's Eve with your favorite piece of classical music. Submit your request for the special edition of the Saturday Evening Request Program as we countdown together with *Great Classical Music!*

January 1st

Hope and Joy

Making resolutions, moving forward from past troubles, and focusing on life's great joys are New Year's Day traditions. Rob Kennedy will offer works of hope and joy throughout *Great Sacred Music*, followed by an afternoon of jubilation during *Weekend Classics*. Finally, a special edition of *Preview!* will look back on the best music of the past year, with an eye on the next.

January 14th-15th

Exploring Eastern Europe

Political events have dramatically changed the lives of people in Eastern Europe and the former U.S.S.R. The one constant has been the undying beauty of the music written by Eastern European composers. The Classical



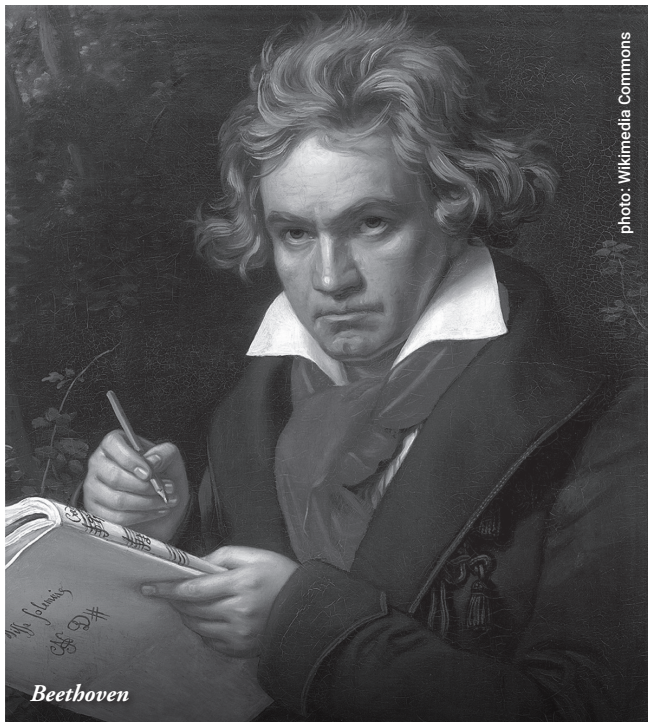
photo: Wikimedia Commons

Tchaikovsky

Station will feature music from Chopin, Liszt, Mussorgsky, Tchaikovsky, Lysenko, and many others this weekend.

January 23rd–27th Celebration: Wolfgang Amadeus Mozart

Wolfgang Amadeus Mozart composed more than 600 pieces and dozens of eternal masterpieces in only 35 years; representing his contribution to classical music with only a few of those selections is a daunting task. Our celebration will span his vast repertoire: concertos, symphonies, chamber works, and piano pieces.



February 1st Black History Month

Recent scholarship brought into focus the contributions—often underappreciated in their time—of black composers and performers. Through the month, featured pieces will shed light on the work of George Walker, Scott Joplin, William Grant Still, Chevalier de Saint-Georges, Florence Price, and others.

February 14th Valentine's Day

Music and romance are so intertwined that it is difficult to imagine one existing without the other. Celebrate romance with a dedication to your partner, or let your crush know how much you have in common, all with Great Classical Music.

February 21st Presidents' Day

Enjoy a mid-week respite as you celebrate this national holiday. The Classical Station delivers relaxing music focused on American composers on Presidents' Day.

Request Hours

For up to twelve hours each Friday and six hours every Saturday, The Classical Station invites our listeners to join the music department! Dedicate a favorite composition to someone across town—or across the globe. Call or visit our website early in the week to reserve your place in The Classical Station's program.



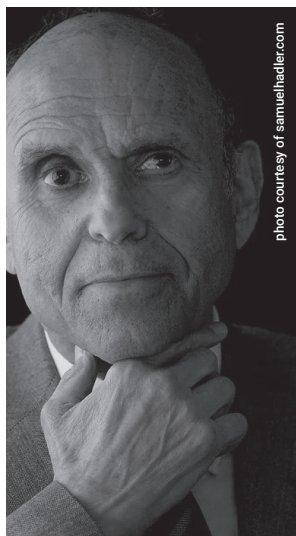
Consider making the gift that will become your Legacy. For information about how to include WCPE in your estate planning, please contact Dan McHugh at dan@theclassicalstation.org

mondays this quarter

My Life in music

First Mondays at 7:00 p.m.
Second Sundays at 5:00 p.m.
(All times eastern)
With host Rob Kennedy

Conversations on *My Life in Music* delve into classical musicians' careers and explore lives filled with music. This quarter, *My Life in Music* features composers Samuel Adler and Amanda Lee Falkenberg. Our retrospective January edition will highlight some of our most popular interviews over the past five years. *My Life in Music* airs on the first Monday of each month at 7 p.m. and the following Sunday at 5 p.m.



Samuel Adler
December



Best of My Life in Music
(2017–2022)
January



Amanda Lee Falkenberg
February

Renaissance Fare

Second Mondays at 7:00 p.m. (eastern)
With host George Douglas

This December's *Renaissance Fare* will visit several European countries to experience the sounds of Christmas during the 15th and 16th centuries. Many beautiful holiday tunes and hymns were written during the Renaissance period. Don't miss our Christmas edition on Monday, December 12, at 7:00 p.m., with a repeat broadcast on Sunday, December 18, at 5:00 p.m!

What did people listen to on New Year's Day 500 years ago? Celebrating the beginning of the New Year has been an important tradition even before the existence of the Julian calendar. Dancing and partying required

mondays this quarter

Monday Night at the symphony

est musical ensembles. Each week, a different orchestra is featured; we spotlight the best of US-based orchestras and European symphonies, musicians united by their continued pursuit of excellence and their reinterpretations of great classical works.

In December, during Beethoven's birthday week, we will share the Pittsburgh Symphony Orchestra's new Beethoven recording. We'll also highlight the talent of JoAnn Falletta and the Buffalo Philharmonic Orchestra on her birthday, February 27. Be sure to listen on Monday nights at 8 p.m. eastern!

December

- 5 North Carolina Symphony
- 12 Pittsburgh Symphony Orchestra
- 19 Tafelmusik Baroque Orchestra
- 26 Cincinnati Symphony and Cincinnati Pops

January

- 2 Atlanta Symphony Orchestra
- 9 Danish National Symphony Orchestra
- 16 Revolutionary and Romantic Orchestra
- 23 Chicago Symphony Orchestra
- 30 Hallé Orchestra

November

- 6 Minnesota Orchestra
- 13 Parley of Instruments
- 20 Leipzig Gewandhaus Orchestra
- 27 Buffalo Philharmonic Orchestra

By Naomi Lambert
Mondays at 8:00 p.m. (eastern)

Every Monday evening, The Classical Station brings a concert to your home, highlighting recordings by some of the world's great-



music! Join us for our New Year's edition of *Renaissance Fare* on Monday, January 9, at 7:00 p.m. with a repeat broadcast on Sunday, January 15, at 5:00 p.m.

In February we'll give a "French Toast to Love!" We'll listen to the most popular *chansons* (or love songs) from Paris and other romantic cities. The program premieres on the eve of Valentine's Day, Monday, February 13, at 7:00 p.m. with a repeat broadcast on Sunday, February 19, at 5:00 p.m.

Listen to *Renaissance Fare* on the second Monday of each month on The Classical

Station with a repeat broadcast on the following Sunday.



opera house

THURSDAY • NIGHT

OPERA HOUSE

Thursdays at 7:00 p.m. (eastern)

With host Dr. Jay Pierson

December 1 Catalani's *La Wally*

Wally (Marton) is in love with Giuseppe (Araiza), the son of her father's nemesis. The aria "Ebben? Ne andrò lontana" was featured throughout the French film *Diva*.

December 8 Gounod's *Mireille*

A naïve young woman, Mireille (Freni), falls in love with Vincent (Vanzo), whom her family thinks is below her. Gounod's intricate and lyrical melodies have a Mediterranean flavor, which inspired the musical style of George Bizet's opera *Carmen*. (Archival broadcast by the late Al Ruocchio)

December 15 Rossini's *La Cenerentola*

Rossini's Cinderella story is jaunty and carefree; mezzo-sopranos are usually cast in trouser roles, but Rossini chose this voice type to shine, culminating in perhaps the most joyous ending in all of operatic repertoire.

December 22 Puccini's *La Bohème*

First performed on February 1, 1896, this story follows the whirlwind romance between Bohemian writer Rodolfo (Pavarotti) and seamstress Mimi (Freni), both struggling with life as impoverished Parisians.

December 29 Leonard Bernstein's *Wonderful Town, Trouble in Tahiti, West Side Story and Candide*

American conductor, composer, and pianist Leonard Bernstein changed how we listen to music. Let Bernstein's sharp rhythms, eloquent melodies, and true American style help you ring in the new year!

January 5 Rossini's *Il Barbiere di Siviglia*

Count Almaviva (Hadley) is in love with Rosina (Mentzer). Since her uncle (Praticò) is trying to keep her away from all other men, the Count enlists the help of Figaro (Hampson).

January 12 Saint-Saëns *Henry VIII*

Henry VIII's (Rouillon) divorce from Catherine of Aragon (Command) and marriage to Anne Boleyn (Vignon) leads to a tragic end. Camille Saint-Saëns' lush orchestration abounds in this 1895 work.

January 19 Wagner's *Lohengrin*

When a mysterious knight (Thomas) comes to save Elsa (Grümmer), she must not ask him his name or where he is from. Wagner's masterpiece will captivate you! (Archival broadcast by the late Al Ruocchio)

January 26 Gilbert & Sullivan's *HMS Pinafore & The Gondoliers*

A wonderful double bill—you're in for a fun-filled evening! The lyrical melodies and patter songs of Sullivan married to W.S. Gilbert's humorous lyrics make for a delightful listening experience.

February 2 Joplin's *Treemonisha*

This 1911 opera by American composer Scott Joplin celebrates African-American music and is filled with spirituals and blues. We will also celebrate the achievements of American singers like Leontyne Price, Shirley Verrett, and others.

February 9 Bernstein's *Trouble in Tahiti/A Quiet Place*

The dramatic action in *Trouble in Tahiti* revolves around Sam (Patrick) and Dinah (Williams), a husband and wife who have become tired of their mundane life. Their story continues in *A Quiet Place*.

February 16 Barber's *Vanessa*

Vanessa (Steber) has waited for decades in a mirrorless home for her lover Anatole (Gedda) to return. There is a knock at the door...has Anatole returned?

February 23 Still's *Troubled Island*

Still's 1949 *Troubled Island* was the first grand opera composed by an African American and produced by a major opera company. The story portrays Jean Jacques Dessalines (Weede), leader of the Haitian revolution.

December 4

Bach: Cantata BWV 70
Fagiolini: *Italian Vespers* (1612)

December 11

Bach: Cantata BWV 186
de Jerusalem: *Matins for the Virgin of Guadalupe*

December 18

Bach: Cantata BWV 147
Rachmaninoff: *Vespers*

December 25

Bach: Cantata BWV 191
Britten: *A Ceremony of Carols*

January 1

Bach: Cantata BWV 190
Saint-Saëns: *Christmas Oratorio*

January 8

Bach: Cantata BWV 58
A Procession for Epiphany

January 15

Bach: Cantata BWV 13
Biber: *Missa Bruxellensis*

January 22

Bach: Cantata BWV 73
Debussy: *Martyrdom of Saint Sebastian*

January 29

Bach: Cantata BWV 81
Beethoven: *Missa Solemnis*

Great Sacred Music

Sundays at 8:00 a.m. (eastern)
With host Rob Kennedy

February 5

Bach: Cantata BWV 144
Haydn: *Missa Brevis Sancti Joannis de Deo*

February 12

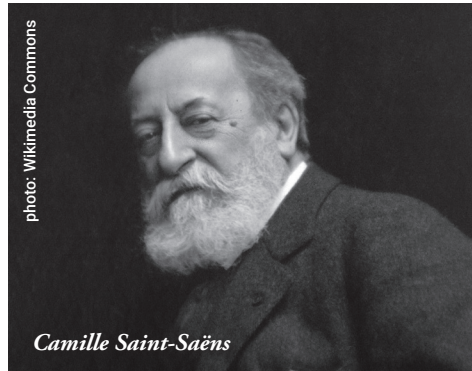
Bach: Cantata BWV 18
Brian: "Te Ergo Quaesumus" from Symphony no. 1 (*Gothic*)

February 19

Bach: Cantata BWV 127
Schubert: Mass No. 1 in F

February 26

Bach: Cantata BWV 177
Perosi: *Passion According to Saint Mark*



Great Sacred Music is made possible by our listeners and the following people and organizations:

All Saints Anglican Church

Raleigh, NC

The Chapel of the Cross

Chapel Hill, NC

First Presbyterian Church

Durham, NC

Kirk of Kildare

Cary, NC

St. George's Anglican Pro-Cathedral

Raleigh, NC

David Crabtree

Raleigh, NC

Dr. & Mrs. Harold Chapman

Macon, GA

Dr. Alfred Goshaw

Chapel Hill, NC

Dr. Jerry Grise

Cary, NC

Blaine Paxton Hall

Ferrington Village, NC

Rev. David Livingstone James

Cary, NC

Carole Keeler

Greensboro, NC

James H. Lazenby

Ferrington Village, NC

William Marley

Raleigh, NC

Dr. Thomas Nutt-Powell

Boston, MA

William Raper

Raleigh, NC

Carter Reed

Montgomery, AL

Claude and Sarah Snow

Chapel Hill, NC

If you or your organization would like to be a patron of Great Sacred Music, contact Rob Kennedy via e-mail or phone at 919-740-5180.

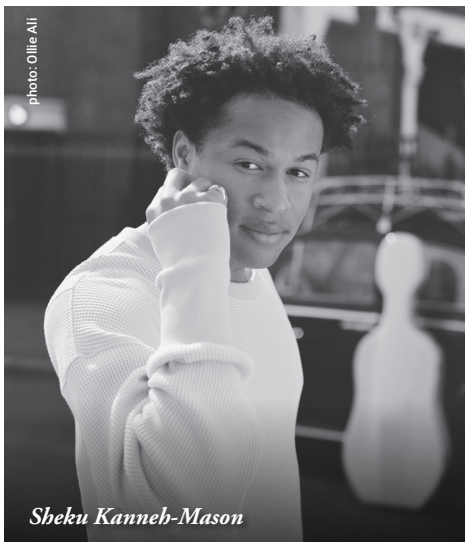
sundays this quarter

Preview!

Sundays at 6:00 p.m. (eastern)
With host David Jeffrey Smith

By Rob Kennedy

Preview! brings you the latest classical releases and local music news, offering a unique look into artists' newest projects, their thoughts on their work, and the experiences they've had as classical musicians. Listen for new recordings of Jean Sibelius's symphonies and the latest releases by international stars such as cellist Sheku Kanneh-Mason and guitarist Plínio Fernandes, whose new recording, 'Saudade', we feature as a thank-you gift for your donation to The Classical Station. Another guest will be the guitarist John Williams, who is featured on the album 'Finding Home'. On January 1, listen to a retrospective on the best interviews of 2022 as we look forward to an exciting slate of guests for 2023, including an interview with the Music Director Designate of the North Carolina Symphony, Carlos Miguel Prieto, and a conversation with violinist Hilary Hahn.



sundays this quarter

wavelengths

**Sundays at 9:00 p.m. (eastern)
With host Ed Amend**

Following *Preview!* each Sunday night, The Classical Station showcases the best music from contemporary composers and significant artists of the last century. Jennifer

Higdon, Caroline Shaw, and Charlotte Bray are among our many featured artists. During a special edition on February 12, we will feature music from the movies on *Preview!* and *Wavelengths* highlighting the greatest composers working in film today.



Photo: David Beecroft

Charlotte Bray

peaceful reflections

**Sundays at 10:00 p.m. (eastern)
With host Ed Amend**

Each Sunday night at 10 p.m., The Classical Station provides you with two hours of relaxing music to bring your Sunday to a close. A soothing blend of orchestral, organ, and choral works will help you reflect on the week behind and prepare for the week ahead.



photo: Ray Hennessy

met broadcast schedule



**All broadcasts begin at 1:00 ET.
See the entire schedule at
TheClassicalStation.org.**

December 10

The Hours (Kevin Puts) (New Production/Met Premiere)

Yannick Nézet-Séguin; Renée Fleming (Clarissa Vaughan), Kelli O'Hara (Laura Brown), Joyce DiDonato (Virginia Woolf), Kathleen Kim (Barbara / Mrs. Latch), Sylvia D'Eramo (Kitty / Vanessa), Denyce Graves (Sally), John Holiday (Man Under the Arch / Hotel Clerk), William Burden (Louis), Sean Panikkar (Leonard Woolf), Kyle Ketelsen (Richard), Brandon Cedel (Dan Brown)

December 17

Rigoletto (Verdi)

Speranza Scappucci; Lisette Oropesa (Gilda), Aigul Akhmetshina (Maddalena), Stephen Costello (Duke of Mantua), Luca Salsi (Rigoletto), Andrea Mastroni (Sparafucile)

December 24

The Magic Flute (Mozart)

Duncan Ward; Joëlle Harvey (Pamina), Aleksandra Olczyk (Queen of the Night), Ben Bliss (Tamino), Joshua Hopkins (Papageno), Alan Held (Speaker), Soloman Howard (Sarastro), Rodell Rosel (Monostatos)

December 31

Met Debuts On The Air (Archival Broadcast)

Highlights of artists making their Metropolitan Opera debuts during live broadcasts.

January 7

Medea (Cherubini) (New Production/Met Premiere)

Carlo Rizzi; Sondra Radvanovsky (Medea), Janai Brugger (Glauce), Ekaterina Gubanova (Neris), Matthew Polenzani (Giasone), Michele Pertusi (Creonte)

January 14

Fedora (Giordano) (New Production)

Marco Armiliato; Sonya Yoncheva (Fedora), Rosa Feola (Olga), Piotr Beczala (Loris Ipanoff), Artur Ruciński (De Sirieux)

January 21

L'elisir D'amore (Donizetti)

Michele Gamba; Golda Schultz (Adina), Javier Camarena (Nemorino), Davide Luciano (Belcore), Ambrogio Maestri (Dulcamara)

January 28

Dialogues des Carmélites (Poulenc)

Bertrand de Billy; Ailyn Pérez (Blanche de la Force), Eva-Maria Westbroek (Mme. Lidoine), Sabine Devieilhe (Constance), Jamie Barton (Mère Marie), Alice Coote (Mme. de Croissy), Piotr Buszewski (Chevalier de la Force), Laurent Naouri (Marquis de la Force)

February 4

Macbeth (Verdi)

Francesco Molinari-Pradelli; Martina Arroyo (Lady Macbeth), Franco Tagliavini (Macduff), Sherrill Milnes (Macbeth), Ruggero Raimondi (Banquo)

February 11

Celebrating Franco Zeffirelli

The Met commemorates the centenary of Franco Zeffirelli's birth with a special presentation drawn from the company's radio archives.

February 18

Don Carlo (Verdi)

Carlo Rizzi; Eleonora Buratto (Elisabeth de Valois), Anita Rachvelishvili (Princess Eboli), Russell Thomas (Don Carlo), Peter Mattei (Rodrigo, Count of Posa), Günther Groissböck (Filippo II), John Relyea (The Grand Inquisitor)

February 25

Lady Macbeth of Mtsensk (Shostakovich)

Keri-Lynn Wilson; Eva-Maria Westbroek (Katerina Ismailova), Brandon Jovanovich (Sergei), Nikolai Schukoff (Zinovy Ismailov), John Relyea (Boris Ismailov), Maria Barakova (Sonyetka), Rodell Rosel (Shabby Peasant), Goran Jurić (Priest), Alexey Shishlyayev (Police Sergeant), Alexander Tsybalyuk (Old Convict)

program listings (december)

December Featured Works

All programming is subject to change. For a complete list of a specific day's music, go to TheClassicalStation.org.

1 Thursday

9:00 a.m.	Alfvén: Suite from <i>The Mountain King</i> , op. 37
10:00 a.m.	Dvorak: Violin Concerto in A Minor, op. 53
12:00 p.m.	Strauss, Josef: <i>Music of the Spheres</i>
2:00 p.m.	Strauss, R.: <i>Don Juan</i> , op. 20
3:00 p.m.	Chadwick: <i>Tam O'Shanter</i>
5:00 p.m.	Vaughan Williams: "Sea Songs" (a March)
7:00 p.m.	Thursday Night Opera House – Catalani: <i>La Wally</i>
10:00 p.m.	Aulin: <i>Three Water Colors</i>

2 Friday

All Request Friday

3 Saturday

9:00 a.m.	Borodin: Symphony no. 3 in A Minor (<i>Unfinished</i>)
10:00 a.m.	Serebrier: Symphony no. 3, (<i>Symphonie Mystique</i>)
12:00 p.m.	Hagen: Concerto in A for Lute and Strings
4:00 p.m.	Mahler: Adagietto from Symphony no. 5 in C-sharp Minor
5:00 p.m.	Bruch: Concerto in E Minor for Clarinet & Viola, op. 88

4 Sunday

9:00 a.m.	Bach: Cantata 70 (<i>Wachet! Betet! Betet! Wachet!</i>)
10:00 a.m.	Traditional: 1612 Italian Vespers
12:00 p.m.	Bach: <i>Brandenburg Concerto</i> no. 4 in G, BWV 1049
2:00 p.m.	Handel: Concerto Grosso in G Minor, op. 6 no. 6
4:00 p.m.	Harbach: <i>Freedom Suite</i>
5:00 p.m.	Renaissance Fare

5 Monday

9:00 a.m.	Novák: <i>Eternal Longing</i>
10:00 a.m.	Geminiani: <i>The Enchanted Forest</i>
12:00 p.m.	Vivaldi: Lute Concerto in D, RV 93
2:00 p.m.	Mozart: Symphony no. 18 in F, K. 130
3:00 p.m.	Tartini: Cello Concerto in D

5:00 p.m.	Williams: "Finale" from <i>The Empire Strikes Back</i>
7:00 p.m.	My Life In Music
9:00 p.m.	Mizesko: <i>Sketches</i> from <i>Pinehurst</i>
10:00 p.m.	Debussy: <i>Images for Piano</i> , Series II

6 Tuesday

9:00 a.m.	Tchaikovsky: <i>Variations on a Rococo Theme</i> , op. 33
10:00 a.m.	Saint-Saëns: Symphony no. 3 in C Minor, op. 78 (<i>Organ</i>)
12:00 p.m.	Schubert: Symphony no. 8 in B Minor, D. 759 (<i>Unfinished</i>)
2:00 p.m.	Rimsky-Korsakov: <i>Capriccio Espagnol</i> , op. 34
3:00 p.m.	Beethoven: Symphony no. 1 in C, op. 21
5:00 p.m.	Sullivan: Overture to <i>Princess Ida</i>
7:00 p.m.	Sibelius: Violin Concerto in D Minor, op. 47
10:00 p.m.	Arensky: Piano Trio no. 1 in D Minor, op. 32

7 Wednesday

9:00 a.m.	Mascagni: "Romance and Scene: Voi lo Sapete" from <i>Cavalleria Rusticana</i>
10:00 a.m.	Prokofiev: <i>Lieutenant Kije Suite</i> , op. 60
12:00 p.m.	Blasius: Suite no. 2 in E-flat for Winds
2:00 p.m.	Bach, C.P.E.: Flute Quartet in D
3:00 p.m.	Graun: Trio Sonata in A
5:00 p.m.	Hisaishi: "One Summer's Day" (from the film <i>Spirited Away</i>)
7:00 p.m.	Mendelssohn: String Symphony no. 11 in F
10:00 p.m.	Brahms: Violin Sonata no. 3 in D Minor, op. 108

8 Thursday

9:00 a.m.	Ponce: Guitar Sonata no. 3
10:00 a.m.	Sibelius: Symphony no. 5 in E-flat, op. 82
12:00 p.m.	Bach: Prelude and Fugue no. 24 in B Minor from <i>The Well-Tempered Clavier, Book 1</i>
2:00 p.m.	Respighi: Suite in G for Strings and Organ
3:00 p.m.	Clementi: Symphony in B-flat, op. 18 no. 1
4:00 p.m.	Sibelius: <i>Finlandia</i> , op. 26
5:00 p.m.	Joplin: "A Breeze from Alabama"

program listings (december)

- 7:00 p.m. | Thursday Night Opera House –
Guonod: *Mireille*
- 10:00 p.m. | Sibelius: String Quartet in D Minor,
op. 56 (*Voces Intimae*)

16 Friday

All-Request Friday

10 Saturday

- 7:00 a.m. | Traditional: “Londonderry Air”
(*Danny Boy*)
- 10:00 a.m. | Franck: Symphony in D Minor
- 12:00 p.m. | Kabalevsky: Piano Concerto no. 2 in
G Minor, op. 23
- 1:00 p.m. | Metropolitan Opera – Puts:
The Hours
- 5:00 p.m. | Franck: *Prelude, Chorale & Fugue*

11 Sunday

- 7:00 a.m. | Lofstrom: “Midsummer Passage”
- 9:00 a.m. | Bach: Cantata 186 (*Argre Dich, O
Seele, Nicht*)
- 10:00 a.m. | Jerusalem: *Matins for the Virgin
of Guadalupe*
- 12:00 p.m. | Mica: String Quartet no. 6 in C
- 2:00 p.m. | Berlioz: *Symphonie Fantastique*,
op. 14
- 5:00 p.m. | My Life In Music
- 10:00 p.m. | Berlioz: “Love Scene” from *Romeo &
Juliet*, op. 17

12 Monday

- 9:00 a.m. | Beethoven: Piano Sonata no. 1 in
F Minor, op. 2 no. 1
- 10:00 a.m. | Schubert: Symphony no. 9 in C,
D. 944 (*Great*)
- 12:00 p.m. | Bach, C.P.E.: String Symphony in G
- 2:00 p.m. | Purcell: Music from *Dioclesian*
- 3:00 p.m. | Haydn: Cassation in C for Lute
and Strings
- 5:00 p.m. | Gade: Overture to *Mariotta*
- 7:00 p.m. | Renaissance Fare
- 8:00 p.m. | Beethoven: Symphony no. 6 in F, op.
68 (*Pastoral*)
- 9:00 p.m. | Tchaikovsky: Symphony no. 4 in F
Minor, op. 36

13 Tuesday

- 9:00 a.m. | Beethoven: Piano Sonata no. 8 in
C Minor, op. 13 (*Pathetique*)
- 10:00 a.m. | Schubert: Octet in F for Strings &
Winds, D. 803

- 12:00 p.m. | Purcell: Sonata in B Minor
- 2:00 p.m. | Danzi: Wind Quintet in G Minor,
op. 56 no. 2
- 4:00 p.m. | Beethoven: “Theme and Variations”
from Piano Trio in E-flat, op. 38
- 5:00 p.m. | Chopin: Mazurka in A Minor, op. 67
no. 4
- 7:00 p.m. | Beethoven: Symphony no. 3 in E-flat,
op. 55 (*Eroica*)
- 10:00 p.m. | Debussy: *Prelude to the Afternoon
of a Faun*

14 Wednesday

- 9:00 a.m. | Bond: Concerto no. 2 in A
- 10:00 a.m. | Beethoven: Piano Concerto no. 1 in
C, op. 15
- 12:00 p.m. | Bach: Chaconne from Violin Partita
in D Minor, BWV 1004
- 2:00 p.m. | Vivaldi: “Spring” from *Four Seasons*
- 3:00 p.m. | Rossini: Overture to *Semiramide*
- 5:00 p.m. | Horner: “The Ludlows” from *Legends
of the Fall*
- 7:00 p.m. | Beethoven: Symphony no. 7 in A,
op. 92
- 10:00 p.m. | Vaughan Williams: *Fantasia on a
Theme by Thomas Tallis*

15 Thursday

- 9:00 a.m. | Glazunov: “Autumn” from *The
Seasons*, op. 67 (*a Ballet*)
- 10:00 a.m. | Beethoven: Violin Concerto in D,
op. 61
- 12:00 p.m. | Mozart: Horn Concerto no. 1 in D,
K. 412
- 2:00 p.m. | White, Joseph: Violin Concerto in
F-sharp Minor
- 3:00 p.m. | Respighi: “The Birds”
- 5:00 p.m. | Brahms: “Hungarian Dance” no. 4
in F Minor
- 7:00 p.m. | Thursday Night Opera House –
Rossini: *Cinderella*
- 6:00 p.m. | Beethoven: Symphony no. 5 in
C Minor, op. 67

16 Friday

- 8:00 a.m. | Beethoven: Bagatelle in A Minor,
“Für Elise”
- 9:00 a.m. | Beethoven: Triple Concerto in C,
op. 56
- All-Request Friday
- 9:00 p.m. | Beethoven: Symphony no. 9 in
D Minor, op. 125 (*Choral*)

program listings (december)

11:00 p.m. | Beethoven: String Quartet no. 14
in C-sharp Minor, op. 131

17 Saturday

7:00 a.m. | Saint-Saëns: *Danse Macabre*, op. 40
9:00 a.m. | Cimarosa: "Overture" to *The Secret Marriage*
10:00 a.m. | Brahms: Piano Concerto no. 1 in
D Minor, op. 15
12:00 p.m. | Enescu: "Romanian Rhapsody" no.
1 in A
1:00 p.m. | Metropolitan Opera – Verdi: *Rigoletto*
2:00 p.m. | Chadwick: String Quartet no. 4
3:00 p.m. | Handel: Concerto Grosso in E Minor,
op. 6 no. 3
5:00 p.m. | Meyerbeer: "Coronation March" from
Le Prophète

18 Sunday

7:00 a.m. | Chopin: *Nocturnes*, op. 15
9:00 a.m. | Bach: Cantata 147 (*Herz Und Mund
Und Tat Und Leben*)
10:00 a.m. | Rachmaninoff: *Vespers*, op. 37
12:00 p.m. | MacDowell: Piano Concerto no. 1 in
A Minor, op. 15
2:00 p.m. | Bach, C.P.E.: Flute Concerto in A
4:00 p.m. | Liszt: *Totentanz*
5:00 p.m. | Renaissance Fare
6:00 p.m. | Chanukah: In Story and Song

19 Monday

9:00 a.m. | Alwyn: Concerto for Oboe, Harp
and Strings
10:00 a.m. | Brahms: Piano Concerto no. 2
in B-flat, op. 83
12:00 p.m. | Vaughan Williams: Overture to
The Wasps

2:00 p.m. | Bridge: *Four Pieces for String
Orchestra*

3:00 p.m. | Chabrier: *Pastoral Suite*

5:00 p.m. | Offenbach: "Barcarolle" from
The Tales of Hoffmann

7:00 p.m. | Elgar: Symphony no. 2 in E-flat, op. 63

9:00 p.m. | Nielsen: Violin Concerto, op. 33

20 Tuesday

9:00 a.m. | Copland: "Three Latin American
Sketches"
10:00 a.m. | Mozart: Serenade no. 7 in D, K. 250
(*Haffner*)
12:00 p.m. | Wassenauer: Concerto in A
2:00 p.m. | Bizet: *L'Arlesienne Suite* no. 2
3:00 p.m. | Harbach: *One of Ours - A Cather
Symphony*
5:00 p.m. | Elgar: "March of the Mogul Emperors"
from *The Crown of India*, op. 66
7:00 p.m. | Rachmaninoff: Symphony no. 2 in E
Minor, op. 27
10:00 p.m. | Liszt: "Berceuse" (*Lullaby*)

21 Wednesday

9:00 a.m. | Mitchell: "Winter"
10:00 a.m. | Tchaikovsky: Symphony no. 1 in G
Minor, op. 13 (*Winter Dreams*)
12:00 p.m. | Grieg: *Norwegian Dances*, op. 35
2:00 p.m. | Fučík: *Winter Storm Waltz*
3:00 p.m. | Vivaldi: "Winter" from *Four Seasons*
5:00 p.m. | Tárrega: Prelude in A Minor
7:00 p.m. | Tchaikovsky: Suite from *The
Nutcracker*, op. 71
8:00 p.m. | Handel: *Messiah: Part 1*
10:00 p.m. | Lullabies and Carols for Christmas
2022



Every weekday afternoon, join Naomi Lambert on "As you Like It" for the Afternoon Enigma - a series of questions designed to expand your knowledge of classical music. You can participate by calling 919-556-0123 or by answering the Enigma on Facebook or Twitter.

program listings (december)

22 Thursday

9:00 a.m.	Abel, Karl: Symphony no. 1 in G
10:00 a.m.	Holst: <i>The Planets</i> , op. 32
12:00 p.m.	Puccini: "Chrysanthemums"
2:00 p.m.	Dvorak: Romantic Pieces for Violin & Piano, op. 75
3:00 p.m.	Liszt: <i>Les Preludes</i>
5:00 p.m.	Ravel: "The Fairy Garden" from <i>Mother Goose Suite</i>
7:00 p.m.	Thursday Night Opera House – Puccini: <i>La Boheme</i>
10:00 p.m.	Saint-Saëns: String Quartet in G, op. 153

23 Friday

All-Request Friday

3:00 p.m.	Lullabies and Carols for Christmas 2022
-----------	---

24 Saturday

8:00 a.m.	Brahms: Clarinet Sonata in F Minor, op. 120 no. 1
9:00 a.m.	Bach: <i>Brandenburg Concerto</i> no. 6 in B-flat, BWV 1051
10:00 a.m.	Beethoven: Symphony no. 4 in B-flat, op. 60
11:00 a.m.	Tchaikovsky: Act IV from <i>Swan Lake</i> , op. 20
1:00 p.m.	Metropolitan Opera – Mozart: <i>The Magic Flute</i>
10:00 p.m.	Lullabies and Carols for Christmas 2022

25 Sunday

9:00 a.m.	Bach: Cantata 191 (<i>Gloria In Excelsis Deo</i>)
10:00 a.m.	Britten: <i>A Ceremony of Carols</i> , op. 28
9:00 p.m.	Hallock: "Behold a Mighty Prophet"
9:10 p.m.	Higdon: "O Magnum Mysterium"
9:20 p.m.	Britten: <i>A Ceremony of Carols</i> , op. 28

26 Monday

9:00 a.m.	Vaughan Williams: <i>The Lark Ascending</i>
10:00 a.m.	Elgar: Violin Concerto in B Minor, op. 61
12:00 p.m.	Stamitz: Clarinet Concerto no. 3 in B-flat
2:00 p.m.	Haydn: Symphony no. 8 in G (<i>Evening</i>)

3:00 p.m.	Handel: <i>Occasional Suite</i> in D
5:00 p.m.	Albinoni: Concerto in D, op. 7 no. 1
7:00 p.m.	Mahler: Symphony no. 1 in D (<i>Titan</i>)
9:00 p.m.	Gershwin: <i>An American in Paris</i> (<i>unabridged version</i>)
10:00 p.m.	Mozart: Violin Sonata in E Minor, K. 304

27 Tuesday

9:00 a.m.	Brahms: <i>Three Intermezzi</i> , op. 117
10:00 a.m.	Dvorak: Symphony no. 1 in C Minor (<i>The Bells of Zlonice</i>)
12:00 p.m.	Debussy: <i>Children's Corner</i>
2:00 p.m.	Smetana: Overture and Dances from <i>The Bartered Bride</i>
3:00 p.m.	Chadwick: <i>Melpomene Overture</i>
5:00 p.m.	Scarlatti, D.: Sonata in F-sharp Minor, K. 25
7:00 p.m.	Brahms: Symphony no. 1 in C Minor, op. 68
10:00 p.m.	Bach: Cello Suite no. 2 in D Minor, BWV 1008

28 Wednesday

9:00 a.m.	Handel: Concerto Grosso in F, op. 3 no. 4
10:00 a.m.	Bach: <i>Goldberg Variations</i> , BWV 988
12:00 p.m.	Mendelssohn: String Symphony no. 10 in B Minor
2:00 p.m.	Tchaikovsky: <i>The Tempest</i> , op. 18
3:00 p.m.	Torroba: <i>Sonatina</i>
5:00 p.m.	Chabrier: "Joyous March"
7:00 p.m.	Sibelius: Symphony no. 2 in D, op. 43
10:00 p.m.	Schumann: String Quartet in A, op. 41 no. 3

29 Thursday

9:00 a.m.	Copland: "Four Dance Episodes" from <i>Rodeo</i>
10:00 a.m.	Schmidt: Symphony no. 1 in E
12:00 p.m.	Vivaldi: Violin Concerto in E-flat, RV 253 (<i>The Raging of the Sea</i>)
2:00 p.m.	Boccherini: Cello Sonata in A
3:00 p.m.	Haydn: Symphony no. 11 in E-flat
5:00 p.m.	Granados: "Spanish Dance" no. 5 (<i>Andalusia</i>)
7:00 p.m.	Thursday Night Opera House – The Music of Leonard Bernstein
10:00 p.m.	Beach: Piano Quintet in F-sharp Minor, op. 67

program listings (december/january)

30 Friday

All-Request Friday

31 Saturday

9:00 a.m.	Higdon: <i>Concerto 4-3</i>
10:00 a.m.	Vivaldi: <i>Four Seasons</i>
11:00 a.m.	Mozart: Piano Sonata no. 8 in A Minor, K. 310
12:00 p.m.	Mendelssohn: String Symphony no. 12 in G Minor
1:00 p.m.	Metropolitan Opera – Archival Broadcast: <i>Met Debuts On The Air</i>

January Featured Works

All programming is subject to change. For a complete list of a specific day's music, go to TheClassicalStation.org.

1 Sunday

7:00 a.m.	Wesley: Symphony no. 4 in D
9:00 a.m.	Bach: Cantata 190 (<i>Singet Dem Herrn Ein Neues Lied</i>)
10:00 a.m.	Saint-Saëns: <i>Christmas Oratorio</i> , op. 12
12:00 p.m.	Mozart: Symphony no. 21 in A, K. 134
2:00 p.m.	Strauss Jr.: "The Blue Danube"
3:00 p.m.	Dussek: Harp Concerto in E-flat, op. 15
5:00 p.m.	Bach: <i>Brandenburg Concerto</i> no. 5 in D, BWV 1050

2 Monday

9:00 a.m.	Liszt: <i>Mephisto Waltz</i> no. 1
10:00 a.m.	Balakirev: Symphony no. 1 in C
12:00 p.m.	Beethoven: Piano Sonata no. 24 in F-sharp, op. 78 (<i>For Therese</i>)
2:00 p.m.	Wagner: Overture to <i>Rienzi</i>
3:00 p.m.	Strauss, R.: <i>Death and Transfiguration</i> , op. 24
5:00 p.m.	Denler: "All Creation Breathes" and "Beneath Starry Skies" from <i>Wild Mustang Suite</i>
7:00 p.m.	Bruckner: Symphony no. 1 in C Minor
10:00 p.m.	Mendelssohn: String Quartet in E-flat, op. 12

3 Tuesday

9:00 a.m.	Mozetich: "El Dorado"
10:00 a.m.	Breton: Symphony no. 2 in E-flat

12:00 p.m.	Vaughan Williams: <i>English Folk Song Suite</i>
2:00 p.m.	Bach, J.C.F.: Sinfonia in F
3:00 p.m.	Bach: Violin Concerto no. 1 in A Minor, BWV 1041
5:00 p.m.	Gliere: "Russian Sailors' Dance" from <i>The Red Poppy</i>
7:00 p.m.	Beethoven: Piano Concerto no. 5 in E-flat, op. 73 (<i>Emperor</i>)
10:00 p.m.	Stenhammar: <i>Late Summer Nights</i> , op. 33

4 Wednesday

9:00 a.m.	Pergolesi: Flute Concerto in G
10:00 a.m.	Suk: Symphony in E, op. 14
12:00 p.m.	Beethoven: <i>Leonore Overture</i> no. 3
2:00 p.m.	Dvorak: <i>The Wood Dove</i> , op. 110
3:00 p.m.	Wagenseil: Harp Concerto in G
5:00 p.m.	Verdi: Prelude to <i>La Traviata</i> , Act III
7:00 p.m.	Sibelius: Symphony no. 1 in E Minor, op. 39
10:00 p.m.	Ravel: String Quartet in F

5 Thursday

9:00 a.m.	Heinichen: Concerto in G
10:00 a.m.	Beethoven: Piano Concerto no. 3 in C Minor, op. 37
12:00 p.m.	Glazunov: <i>Stenka Razin</i> , op. 13
2:00 p.m.	Boccherini: Cello Concerto no. 4 in C
3:00 p.m.	Locklair: Symphony no. 2 (<i>America</i>)
5:00 p.m.	Coates: "The Dambusters" (<i>a March</i>)
7:00 p.m.	Thursday Night Opera House – Rossini: <i>The Barber of Seville</i>
10:00 p.m.	Faure: <i>Theme & Variations</i> in C-sharp Minor, op. 73

6 Friday

9:00 a.m.	Bruch: Violin Concerto no. 1 in G Minor, op. 26
All-Request Friday	
10:00 p.m.	Scriabin: "Andante" from Symphony no. 2 in C Minor, op. 29

7 Saturday

9:00 a.m.	Poulenc: Trio for Piano, Oboe and Bassoon
10:00 a.m.	Brahms: Violin Concerto in D, op. 77
11:00 a.m.	Giuliani: Guitar Concerto no. 1 in A, op. 30

program listings (january)

1:00 p.m. Metropolitan Opera – Cherubini:
Medea

5:00 p.m. Telemann: Overture in B-flat

8 Sunday

9:00 a.m. Bach: Cantata 58 (*Ach Gott, Wie
Manches Herzeleid*)

10:00 a.m. A Procession & Carols for Epiphany

12:00 p.m. Albinoni: Oboe Concerto in D Minor,
op. 9 no. 2

2:00 p.m. Clarke, R.: Piano Trio

3:00 p.m. Mozart: Bassoon Concerto in B-flat,
K. 191

5:00 p.m. Glinka: *Grand Sextet* in E-flat

9 Monday

9:00 a.m. Massenet: *Picturesque Scenes*

10:00 a.m. Paine: Symphony no. 1 in C Minor,
op. 23

12:00 p.m. Handel: "Musette" from Concerto
Grosso in G Minor, op. 6 no. 6

2:00 p.m. Haydn: Piano Trio no. 44 in E

3:00 p.m. Diamond: Symphony no. 4

5:00 p.m. Villa-Lobos: "Mazurka-Choro" from
Brazilian Popular Suite

7:00 p.m. Chopin: Piano Concerto no. 1 in E
Minor, op. 11

10:00 p.m. Elgar: *Dream Children*, op. 43

10 Tuesday

9:00 a.m. Aulin: *Three Water Colors*

10:00 a.m. Dvorak: Symphony no. 7 in D Minor,
op. 70

12:00 p.m. Purcell: Symphony from *Hail! Bright
Cecilia*

2:00 p.m. Stamitz, K.: Symphony in G, op. 2
no. 3

3:00 p.m. Handel: Overture in B-flat from
Rodrigo

5:00 p.m. Verdi: Prelude to *Aida*

7:00 p.m. Mendelssohn: Symphony no. 3 in A
Minor, op. 56 (*Scottish*)

10:00 p.m. Purcell: Sonata no. 1 in G Minor

11 Wednesday

9:00 a.m. Vivaldi: Violin Concerto in A, op. 11
no. 3

10:00 a.m. Gliere: Symphony no. 2 in C Minor,
op. 25

12:00 p.m. Grieg: Symphonic Dance, op. 64 no. 3

2:00 p.m. Duruflé: "Toccata" from *Suite*, op. 5

3:00 p.m. Bach, C.P.E.: Trio Sonata in G

5:00 p.m. Falla: "Ritual Fire Dance" from *El
Amor Brujo (Love, the Magician)*

7:00 p.m. Mahler: Symphony no. 2 in C Minor
(*Resurrection*)

10:00 p.m. Wagner: Prelude to Act III from *Die
Meistersinger von Nürnberg*

12 Thursday

9:00 a.m. Chopin: Scherzo no. 4 in E, op. 54

10:00 a.m. Brahms: Piano Trio no. 1 in B, op. 8

12:00 p.m. Vivaldi: Flute Concerto in D, RV 90
(*Il Gardellino*)

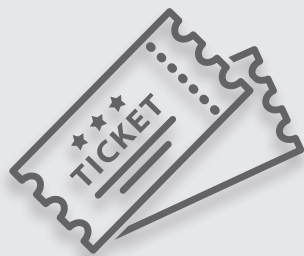
2:00 p.m. Handel: Recorder Sonata in C

3:00 p.m. Stamitz: Concerto in G for Flute
and Oboe

5:00 p.m. Lortzing: Overture to *Regina*

7:00 p.m. Thursday Night Opera House –
Saint-Saëns: *Henry VIII*

10:00 p.m. Wolf-Ferrari: Suite Concertino in F,
op. 16



Enjoy going to the symphony, the opera, or the theater? Join Nick Robinson on Wednesday mornings during "Classical Café" for the Weekly Ticket Giveaway. Call in for your chance to win free tickets to upcoming concerts at 919-556-0123.

program listings (january)

13 Friday

9:00 a.m.	Ravel: <i>Le Tombeau de Couperin</i>
All-Request Friday	
10:00 p.m.	Bach: Cello Suite no. 5 in C Minor, BWV 1011

14 Saturday

9:00 a.m.	Smetana: <i>From Bohemia's Woods and Fields</i> from <i>Má Vlast (My Fatherland)</i>
10:00 a.m.	Tchaikovsky: <i>Manfred</i> Symphony, op. 58
12:00 p.m.	Liszt: <i>Hungarian Rhapsody</i> no. 3 in D
1:00 p.m.	Metropolitan Opera: <i>Giordano – Fedora</i>
2:00 p.m.	Paderewski: <i>Polish Fantasy</i> for Piano and Orchestra, op. 19
3:00 p.m.	Rachmaninoff: <i>The Isle of the Dead</i> , op. 29
5:00 p.m.	Chopin: Etude in B Minor, op. 25 no. 10

15 Sunday

9:00 a.m.	Bach: Cantata 13 (<i>Meine Seufzer, Meine Tränen</i>)
10:00 a.m.	Biber: <i>Missa Bruxellensis</i>
12:00 p.m.	Scriabin: Piano Sonata no. 2 in G-sharp Minor, op. 19 (<i>Sonata-Fantasie</i>)
2:00 p.m.	Tchaikovsky: Symphony no. 6 in B Minor, op. 74 (<i>Pathétique</i>)
3:00 p.m.	Kodály: <i>Summer Evening</i>
5:00 p.m.	Mussorgsky: <i>Night on Bald Mountain</i>

16 Monday

9:00 a.m.	Grandjany: Rhapsodie for Harp, op. 10
10:00 a.m.	Haydn: Symphony no. 103 in E-flat (<i>Drum Roll</i>)
12:00 p.m.	Herold: Overture to <i>Zampa</i>
2:00 p.m.	Chopin: Scherzo no. 2 in B-flat Minor, op. 31
3:00 p.m.	Handel: Concerto no. 1 in B-flat for Two Wind Ensembles and Strings
5:00 p.m.	Albinoni: <i>Fantasie</i>
7:00 p.m.	Brahms: Serenade no. 1 in D, op. 11
10:00 p.m.	Rubbra: String Quartet no. 4, op. 150

17 Tuesday

9:00 a.m.	Gossec: Symphony Concertante for Two Harps
-----------	--

10:00 a.m.	Schmidt: Symphony no. 2 in E-flat
12:00 p.m.	Vivaldi: Concerto in C, RV 534
2:00 p.m.	Ponce: <i>Sonata Mexicana</i>
3:00 p.m.	Haydn: Symphony no. 84 in E-flat
5:00 p.m.	Grainger: "Molly on the Shore"
7:00 p.m.	Dohnanyi: Suite in F-sharp Minor, op. 19
10:00 p.m.	Brahms: Ballade in B, op. 10 no. 4

18 Wednesday

9:00 a.m.	Chabrier: <i>Pastoral Suite</i>
10:00 a.m.	Beethoven: Quintet in E-flat for Piano & Winds, op. 16
12:00 p.m.	Field: Piano Sonata in E-flat, op. 1 no. 1
2:00 p.m.	Vanhal: Symphony in C (<i>Sinfonia Comista</i>)
3:00 p.m.	Benda, Franz: Flute Concerto in E Minor
5:00 p.m.	Grieg: "Morning Mood" from <i>Peer Gynt Suite</i> no. 1, op. 46
7:00 p.m.	Mahler: Symphony no. 4 in G
10:00 p.m.	Faure: Nocturne no. 7 in C-sharp Minor, op. 74

19 Thursday

9:00 a.m.	Svendson: <i>Norwegian Rhapsody</i> no. 1, op. 17
10:00 a.m.	Beethoven: Piano Concerto no. 2 in B-flat, op. 19
12:00 p.m.	Bach: Triple Concerto in A Minor, BWV 1044
2:00 p.m.	Ravel: <i>Bolero</i>
3:00 p.m.	Rachmaninoff: Symphony no. 2 in E Minor, op. 27
5:00 p.m.	Tárrega: "Recuerdos de la Alhambra"
7:00 p.m.	Thursday Night Opera House – Wagner: <i>Lohengrin</i>
10:00 p.m.	Vivaldi: Sonata in D Minor for 2 Violins, RV 63

20 Friday

9:00 a.m.	Chausson: <i>Poème</i> , op. 25
All-Request Friday	
10:00 p.m.	Chausson: Piano Trio in G Minor, op. 3

21 Saturday

9:00 a.m.	Schubert: Sonatina in D, D. 384
10:00 a.m.	Dvorak: Piano Quintet no. 2 in A, op. 81

program listings (january)

11:00 a.m.	Ponchielli: "Dance of the Hours" from <i>La Gioconda</i>
1:00 p.m.	Metropolitan Opera – Donizetti: <i>L'elisir d'amore</i>
4:00 p.m.	Corelli: Concerto Grosso in D, op. 6 no. 7
5:00 p.m.	Ries: Piano Quintet in B Minor, op. 74

22 Sunday

9:00 a.m.	Bach: Cantata 73 (<i>Herr, Wie Du Willt, So Schick's Mit Mir</i>)
10:00 a.m.	Debussy: <i>The Martyrdom of Saint Sebastian</i>
12:00 p.m.	Rodrigo: <i>Concierto de Aranjuez</i>
2:00 p.m.	Ravel: <i>Noble and Sentimental Waltzes</i>
3:00 p.m.	Mercadante: Flute Concerto in E
5:00 p.m.	Wagner: Prelude to Act 1 from <i>Lohengrin</i>

23 Monday

9:00 a.m.	Mozart: Oboe Quartet in F, K. 370
10:00 a.m.	Clementi: Symphony no. 3 in G (<i>The Great National</i>)
12:00 p.m.	Svendsen: Romance in G for Violin, op. 26
2:00 p.m.	Mozart: Symphony no. 15 in G, K. 124
3:00 p.m.	Respighi: <i>The Fountains of Rome</i>
5:00 p.m.	Dowland: <i>Fantasia</i>
7:00 p.m.	Schumann: Symphony no. 3 in E-flat, op. 97 (<i>Rhenish</i>)
9:00 p.m.	Mozart: Serenade no. 11 in E-flat (for winds), K. 375
10:00 p.m.	Barber: Adagio for Strings, op. 11

24 Tuesday

9:00 a.m.	Frederick the Great: Symphony in D
10:00 a.m.	Mozart: Symphony no. 36 in C, K. 425 (<i>Linz</i>)
12:00 p.m.	Mendelssohn: Piano Quartet no. 2 in F Minor, op. 2
2:00 p.m.	Wagner: Prelude to Act 1 from <i>Tristan and Isolde</i>
3:00 p.m.	Mozart: Divertimento in F, K. 138
5:00 p.m.	Satie: "Gymnopedie" no. 1
7:00 p.m.	Brahms: Symphony no. 4 in E Minor, op. 98
10:00 p.m.	Mozart: String Quintet in G Minor, K. 516

25 Wednesday

9:00 a.m.	Vanhal: Symphony in C
10:00 a.m.	Mozart: Symphony no. 38 in D, K. 504 (<i>Prague</i>)
12:00 p.m.	Hummel: Trumpet Concerto
2:00 p.m.	Mozart: Violin Sonata in F, K. 376
3:00 p.m.	Delius: <i>In a Summer Garden</i> , a Rhapsody
5:00 p.m.	Mozart: Overture to <i>The Impresario</i> , K. 486
7:00 p.m.	Mozart: Symphony no. 40 in G Minor, K. 550
10:00 p.m.	Debussy: <i>Suite Bergamasque</i>

26 Thursday

9:00 a.m.	Bizet: <i>Patrie Overture</i>
10:00 a.m.	Mozart: Symphony no. 41 in C, K. 551 (<i>Jupiter</i>)
12:00 p.m.	Mozart: Piano Sonata no. 14 in C Minor, K. 457
2:00 p.m.	Bach, C.P.E.: Flute Concerto in B-flat
3:00 p.m.	Ravel: Piano Concerto in G
5:00 p.m.	Copland: "Hoe Down" from <i>Rodeo</i>
7:00 p.m.	Thursday Night Opera House – Gilbert & Sullivan: <i>HMS Pinafore / The Gondoliers</i>
10:00 p.m.	Mozart: Six Preludes and Fugues for String Trio, K. 404a

27 Friday

9:00 a.m.	Mozart: Clarinet Concerto in A, K. 622
All-Request Friday	
10:00 p.m.	Mozart: Requiem in D Minor, K. 626

28 Saturday

9:00 a.m.	Herold: Overture to <i>Zampa</i>
10:00 a.m.	Schubert: String Quintet in C, D. 956
11:00 a.m.	Haydn: Symphony no. 104 in D (<i>London</i>)
12:00 p.m.	Vivaldi: Concerto in C, RV 189
1:00 p.m.	Metropolitan Opera – Poulenc: <i>Dialogues des Carmélites</i>
5:00 p.m.	Britten: <i>Variations and Fugue on a Theme of Purcell</i> , op. 34

29 Sunday

9:00 a.m.	Bach: Cantata 81 (<i>Jesus Schlaft, Was Soll Ich Hoffen</i>)
10:00 a.m.	Beethoven: <i>Missa Solemnis</i> in D, op. 123

program listings (january/february)

12:00 p.m.	Delius: <i>Over the Hills and Far Away</i>
2:00 p.m.	Schumann, C.: Piano Concerto in A Minor, op. 7
3:00 p.m.	Debussy: <i>Nocturnes</i>
5:00 p.m.	Telemann: <i>Paris Quartet</i> no. 9

30 Monday

9:00 a.m.	Quantz: Flute Concerto in C Minor
10:00 a.m.	Dvorak: String Quartet no. 14 in A-flat, op. 105
12:00 p.m.	Bizet: <i>Chromatic Variations</i>
2:00 p.m.	Liszt: <i>Orpheus</i>
3:00 p.m.	Lortzing: Overture to <i>Undine</i>
5:00 p.m.	Vivaldi: "Spring" from <i>Four Seasons</i>
7:00 p.m.	Rachmaninoff: Piano Concerto no. 4 in G Minor, op. 40
11:00 p.m.	Granados: <i>Poetic Waltzes</i>

31 Tuesday

9:00 a.m.	Glass: "Echorus"
10:00 a.m.	Schubert: Piano Quintet in A, D. 667 (<i>Trout</i>)
12:00 p.m.	Corelli: Cello Sonata in D Minor, op. 5 no. 8
2:00 p.m.	Saint-Saëns: Symphony no. 2 in A Minor, op. 55
3:00 p.m.	Suk: <i>Fantastic Scherzo</i> , op. 25
5:00 p.m.	Malats: "Serenata Española"
7:00 p.m.	Offenbach: Cello Concerto in G (<i>Military</i>)
8:00 p.m.	Schubert: Symphony no. 6 in C, D. 589
10:00 p.m.	Schubert: "Ave Maria", D. 839

February Featured Works

All programming is subject to change. For a complete list of a specific day's music, go to TheClassicalStation.org.

1 Wednesday

9:00 a.m.	Walker: "Lyric for Strings"
10:00 a.m.	Saint-Saëns: Violin Concerto no. 3 in B Minor, op. 61
12:00 p.m.	Milhaud: <i>Le Boeuf Sur le Toit</i>
2:00 p.m.	Barber: Symphony no. 1, op. 9 (<i>Symphony in One Movement</i>)
3:00 p.m.	Bach: <i>English Suite</i> no. 5 in E Minor, BWV 810
5:00 p.m.	Joplin: "A Breeze from Alabama"

7:00 p.m.	Brahms: Serenade no. 2 in A, op. 16
10:00 p.m.	Ireland: Piano Concerto in E-flat

2 Thursday

9:00 a.m.	Milano: Three Fantasias for Lute
10:00 a.m.	Borodin: Symphony no. 1 in E-flat
12:00 p.m.	Kreisler: Praeludium and Allegro
2:00 p.m.	Vanhal: Symphony in E Minor
3:00 p.m.	Chopin: <i>Four Nocturnes</i>
5:00 p.m.	Handel: Overture to <i>Atalanta</i>
7:00 p.m.	Thursday Night Opera House – Joplin: <i>Treemonisha</i>
10:00 p.m.	Arensky: <i>Variations on a Theme of Tchaikovsky</i> , op. 35a

3 Friday

8:00 a.m.	Mendelssohn: Symphony no. 5, op. 107 (<i>Reformation</i>)
9:00 a.m.	Mendelssohn: Violin Concerto in E Minor, op. 64
All-Request Friday	
10:00 p.m.	Mendelssohn: Cello Sonata no. 1 in B-flat, op. 45

4 Saturday

9:00 a.m.	Locatelli: Concerto Grosso in B-flat, op. 1 no. 3
10:00 a.m.	Mozart: Violin Concerto no. 5 in A, K. 219 (<i>Turkish</i>)
11:00 a.m.	Haydn: Symphony no. 40 in F
12:00 p.m.	Dvorak: <i>Scherzo Capriccioso</i> , op. 66
1:00 p.m.	Metropolitan Opera – Verdi: <i>Macbeth</i>
4:00 p.m.	Williams: Suite from <i>Star Wars, Episode VII: The Force Awakens</i>
5:00 p.m.	Joplin: "Palm Leaf Rag"

5 Sunday

9:00 a.m.	Bach: Cantata 144 (<i>Nimm, Was Dein Ist, Und Gehe Hin</i>)
10:00 a.m.	Haydn: <i>Missa Brevis Sancti Joannis de Deo</i>
12:00 p.m.	Glazunov: Piano Sonata no. 1 in B-flat, op. 74
2:00 p.m.	Sarasate: <i>Carmen Fantasy</i> , op. 25
3:00 p.m.	Bruckner: "Adagio" from Symphony no. 2 in C Minor
5:00 p.m.	Heinichen: Concerto in F

program listings (february)

6 Monday

9:00 a.m.	Finzi: Romance for String Orchestra, op. 11
10:00 a.m.	Massenet: Piano Concerto in E-flat
12:00 p.m.	Dukas: <i>Sorcerer's Apprentice</i>
2:00 p.m.	Elgar: <i>In the South (Alassio)</i> , op. 50
3:00 p.m.	Bochsa: Harp Concerto no. 1 in D Minor
5:00 p.m.	Sousa: "Waltzes from El Capitan"
7:00 p.m.	Sibelius: Violin Concerto in D Minor, op. 47
10:00 p.m.	Gershwin: Lullaby for Strings

7 Tuesday

9:00 a.m.	Mozart: Clarinet Trio in E-flat, K. 498 (<i>Kegelstatt</i>)
10:00 a.m.	Haydn: Symphony no. 101 in D (<i>Clock</i>)
12:00 p.m.	Kodály: <i>Dances of Galanta</i>
2:00 p.m.	Delibes: Suite from <i>Coppelia</i>
3:00 p.m.	Schumann: <i>Humoreske</i> , op. 20
5:00 p.m.	Beethoven: Bagatelle in A Minor (<i>Für Elise</i>)
7:00 p.m.	Mozart: Piano Concerto no. 21 in C, K. 467
10:00 p.m.	Stenhammar: <i>Midwinter</i> , op. 24

8 Wednesday

9:00 a.m.	Williams: "Main Theme" from <i>Star Wars</i>
10:00 a.m.	Smetana: Piano Trio in G Minor, op. 15
12:00 p.m.	Telemann: Trumpet Concerto no. 2 in D
2:00 p.m.	Still: <i>Vignettes</i>
3:00 p.m.	Haydn: Symphony no. 15 in D
5:00 p.m.	Williams: Theme from <i>Jaws</i>
7:00 p.m.	Schumann: Symphony no. 4 in D Minor, op. 120
10:00 p.m.	Williams: "Remembrances" from <i>Schindler's List</i>

9 Thursday

9:00 a.m.	Holst: <i>Egdon Heath</i> , op. 47
10:00 a.m.	Price: Symphony no. 1 in E Minor
12:00 p.m.	Dvorak: <i>Theme and Variations</i> in A-flat, op. 36
2:00 p.m.	Rimsky-Korsakov: <i>Russian Easter Overture</i> , op. 36

3:00 p.m.	Chausson: <i>Viviane</i> , op. 5
5:00 p.m.	Rachmaninoff: Prelude in G Minor, op. 23 no. 5
7:00 p.m.	Thursday Night Opera House – Bernstein: <i>Trouble in Tahiti / A Quiet Place</i>
10:00 p.m.	Mozart: Fantasia in C Minor, K. 475

10 Friday

All-Request Friday

11 Saturday

9:00 a.m.	Purcell: Suite from <i>The Fairy Queen</i>
10:00 a.m.	Beethoven: String Quartet no. 10 in E-flat, op. 74 (<i>Harp</i>)
11:00 a.m.	De Lalande: First Caprice
12:00 p.m.	Rossini: Overture to <i>William Tell</i>
1:00 p.m.	Metropolitan Opera – Archival Broadcast: <i>Celebrating Franco Zeffirelli</i>
5:00 p.m.	Mendelssohn-Hensel: Piano Sonata in C Minor

12 Sunday

9:00 a.m.	Bach: Cantata 18 (<i>Gleich Wie Der Regen Und Schnee</i>)
10:00 a.m.	Brian: "Te Ergo Quaesumus" from Symphony no. 1 (<i>Gothic</i>)
12:00 p.m.	Mozart: Symphony no. 1 in E-flat, K. 16
2:00 p.m.	Vaughan Williams: <i>Fantasia on a Theme by Thomas Tallis</i>
3:00 p.m.	Parry: Symphony no. 5 in B Minor
5:00 p.m.	Raff: "A Mighty Fortress Is Our God"

13 Monday

9:00 a.m.	Sor: <i>Fantasy and Brilliant Variations</i> , op. 30
10:00 a.m.	Hummel: Clarinet Quartet in E-flat
12:00 p.m.	Veracini: Overture no. 2 in F
2:00 p.m.	Still: "A Deserted Plantation"
3:00 p.m.	Weber: Overture to <i>Oberon</i>
5:00 p.m.	Joplin: "Sunflower Slow Drag"
7:00 p.m.	Elgar: Cello Concerto in E Minor, op. 85
10:00 p.m.	Sor: "Introduction and Variations on 'Malbroug'", op. 28

14 Tuesday

Valentine's Day All Request

program listings (february)

15 Wednesday

9:00 a.m.	Praetorius: Suite in D from <i>Terpsichore</i>
10:00 a.m.	Schumann: Symphony no. 1 in B-flat, op. 38 (<i>Spring</i>)
12:00 p.m.	Bach: <i>Brandenburg Concerto</i> no. 2 in F, BWV 1047
2:00 p.m.	Telemann: Concerto in E-flat for 2 Horns from <i>Tafelmusik</i>
3:00 p.m.	Schubert: Allegro in A Minor for Piano Four Hands, D. 947 (<i>The Storms of Life</i>)
5:00 p.m.	Chopin: Etude in E, op. 10 no. 3 (<i>Tristesse</i>)
7:00 p.m.	Sibelius: Symphony no. 3 in C, op. 52
10:00 p.m.	Schubert: "Introduction and Variations on 'Withered Flowers'", D. 802

16 Thursday

9:00 a.m.	Corigliano: <i>The Red Violin Caprices for Solo Violin</i>
10:00 a.m.	Price: Symphony no. 4 in D Minor
12:00 p.m.	Boccherini: Symphony in D Minor, op. 12 no. 4 (<i>House of the Devil</i>)
2:00 p.m.	Medtner: <i>Tragic Sonata</i> , op. 39 no. 5
3:00 p.m.	Gounod: <i>Ballet Music</i> from <i>Faust</i>
5:00 p.m.	Williams: "Anakin's Theme" from <i>Star Wars: The Phantom Menace</i>
7:00 p.m.	Thursday Night Opera House – Barber: <i>Vanessa</i>
11:00 p.m.	Widor: Andante from Piano Quintet in D Minor, op. 7

17 Friday

09:00 a.m.	Corelli: Cello Sonata in D Minor, op. 5 no. 8
------------	---

All-Request Friday

10:00 p.m.	Corelli: Concerto Grosso in G Minor, op. 6 no. 8 (<i>Christmas Concerto</i>)
------------	--

18 Saturday

9:00 a.m.	Berlioz: <i>Roman Carnival Overture</i> , op. 9
10:00 a.m.	Rimsky-Korsakov: Quintet in B-flat
11:00 a.m.	Still: <i>Poem for Orchestra</i>
12:00 p.m.	Couperin: <i>Royal Concert</i> no. 1
1:00 p.m.	Metropolitan Opera – Verdi: <i>Don Carlo</i>

19 Sunday

9:00 a.m.	Bach: Cantata 127 (<i>Herr Jesu Christ, Wahr' Mensch Und Gott</i>)
10:00 a.m.	Schubert: Mass no. 1 in F, D. 105
12:00 p.m.	Boccherini: Symphony in D, op. 12 no. 1
2:00 p.m.	Devienne: Flute Concerto no. 7 in E Minor
4:00 p.m.	Dvorak: Rhapsody in A Minor, op. 14
5:00 p.m.	Ravel: <i>Gaspard de la Nuit</i>

20 Monday

9:00 a.m.	Czerny: Variations in D for Piano and Violin, op. 1
10:00 a.m.	Ries: Piano Concerto in C-sharp Minor, op. 55
12:00 p.m.	Herrmann: Prelude and "Love Scene" from <i>Vertigo</i>
2:00 p.m.	Barrios: "La Catedral"
3:00 p.m.	Zarzycki: Andante and Polonaise, op. 23
5:00 p.m.	Still: "Song for the Lonely"
7:00 p.m.	Sibelius: Symphony no. 6 in D Minor, op. 104
10:00 p.m.	Mahler: Piano Quartet Movement in A Minor



Want to listen to classical music on your smart phone? The free WCPE Radio app plays nothing but Great Classical Music, 24 hours a day. You can hear the music you love on The Classical Station everywhere you go. Download our app using the QR code on the back of every issue.

program listings (february)

21 Tuesday

9:00 a.m.	Bach: Minuets I & II from Cello Suite no. 1, BWV 1007
10:00 a.m.	Delibes: Suite from <i>Sylvia</i>
12:00 p.m.	Gershwin: <i>Rhapsody in Blue</i>
2:00 p.m.	Bach, C.P.E.: Harp Sonata in G
3:00 p.m.	Chopin: Fantasia in F Minor, op. 49
5:00 p.m.	Delius: "La Calinda"
7:00 p.m.	Price: <i>Mississippi River Suite</i>
10:00 p.m.	Debussy: <i>Estantes</i>

22 Wednesday

9:00 a.m.	Nicolai: Overture to <i>The Homecoming of the Exile</i>
10:00 a.m.	Gade: Symphony no. 1 in C Minor, op. 5
12:00 p.m.	Borodin: "Polovtsian Dances" from <i>Prince Igor</i>
2:00 p.m.	Wagner: Overture to <i>Tannhauser</i>
3:00 p.m.	Weber: Andante and Hungarian Rondo, op. 35
5:00 p.m.	Prokofiev: "The Child Juliet" from <i>Romeo and Juliet</i> , Act I
7:00 p.m.	Wieniawski: Violin Concerto no. 1 in F-sharp Minor, op. 14
10:00 p.m.	Faure: Nocturne no. 2 in B, op. 33 no. 2

23 Thursday

9:00 a.m.	Boyce: Overture no. 6 in D Minor
10:00 a.m.	Handel: Suite in F from <i>Water Music</i>
12:00 p.m.	Boccherini: String Quintet in A, op. 29 no. 4
2:00 p.m.	Tchaikovsky: Suite from <i>Sleeping Beauty</i> , op. 66
3:00 p.m.	Mendelssohn: String Symphony no. 4 in C Minor
5:00 p.m.	Frescobaldi: Canzon no. 2 in C
7:00 p.m.	Thursday Night Opera House – Still: <i>Troubled Island</i>
10:00 p.m.	Tveitt: Selections from <i>Fifty Folk Tunes from Hardanger</i> , op. 150

24 Friday

All-Request Friday

25 Saturday

9:00 a.m.	Mozart: Oboe Concerto in C, K. 314
10:00 a.m.	Liszt: Piano Concerto no. 2 in A

11:00 a.m.	Schumann: <i>Papillons</i> , op. 2
12:00 p.m.	Schumann: <i>Fairy Tales for Clarinet, Viola and Piano</i> , op. 132
3:00 p.m.	Metropolitan Opera – Shostakovich: <i>Lady Macbeth of Mtsensk</i>
5:00 p.m.	Mendelssohn: String Quartet in F Minor, op. 80

26 Sunday

9:00 a.m.	Bach: Cantata 177 (<i>Ich Ruf Zu Dir, Herr Jesu Christ</i>)
10:00 a.m.	Perosi: <i>Passion According to St. Mark</i>
12:00 p.m.	Hoffmann, E.T.A.: Harp Quintet in C
1:00 p.m.	Bridge: Chamber Concerto for Piano and Strings
2:00 p.m.	Sanz: <i>Suite Española</i>
4:00 p.m.	Purcell: Four Pavans
5:00 p.m.	Haydn: Symphony no. 89 in F

27 Monday

9:00 a.m.	Faure: Ballade for Piano and Orchestra, op. 19
10:00 a.m.	Parry: Symphony no. 4 in E Minor
11:00 a.m.	Paine: <i>Poseidon and Amphitrite</i> , op. 44 (<i>An Ocean Fantasy</i>)
2:00 p.m.	Smetana: "The Moldau" from <i>Má Vlast (My Fatherland)</i>
3:00 p.m.	Giuliani: <i>Grand Duo Concertante</i> in A, op. 85
5:00 p.m.	Pachelbel: Canon in D
7:00 p.m.	Copland: <i>Appalachian Spring</i>
8:00 p.m.	Tyberg: Symphony no. 2 in F Minor
10:00 p.m.	Fibich: <i>The Tempest</i> , op. 46

28 Tuesday

9:00 a.m.	Respighi: <i>Roman Festivals</i>
10:00 a.m.	Rossini: <i>The Fantastic Toyshop</i>
12:00 p.m.	Mozart: Symphony no. 33 in B-flat, K. 319
2:00 p.m.	Beethoven: Piano Sonata no. 15 in D, op. 28 (<i>Pastoral</i>)
3:00 p.m.	Bizet: <i>L'Arlesienne Suite</i> no. 1
5:00 p.m.	Albéniz: Tango from <i>España</i> , op. 165
7:00 p.m.	Rossini: Ballet Music from <i>Moses</i>
10:00 p.m.	Still: "Summerland" from <i>Three Visions Suite</i>

Winter 2022

WCPE is pleased to offer the following selection of thank-you gifts when you make a donation to support *Great Classical Music* on WCPE. All members also receive a subscription of *Quarter Notes*. Learn more about the benefits of membership at TheClassicalStation.org.

For a \$60 donation (or \$5/month sustainer)

- Gray Writing Pen
- Car Magnet
- Keychain



keychain

For a \$100 donation

- Ice Scraper
- Pizza Cutter
- Ice Cream Scoop



pizza cutter

For a \$120 donation (or \$10/month sustainer)

- Socks (new!)
- WCPE T-shirt,
Colonial Blue/white logo

socks



For a \$150 donation (or \$12.50/mo sustainer)

- Bib Apron, Royal/white logo
- Cellphone Stand (new!)



apron

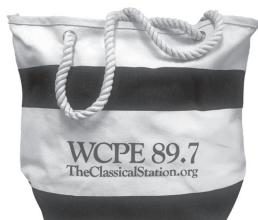


cellphone stand

For a \$180 donation (or \$15/month sustainer)

- Rope Handle Tote Bag

tote bag

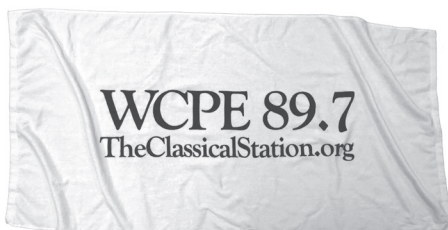


For a \$200 donation

- Day dedication, four times on the day you choose

For a \$240 donation (or \$20/month sustainer)

- Beach Towel
- BBQ Set - turner & tongs w/ wooden handles



Beach Towel



BBQ Set

For a \$300 donation (or \$25/month sustainer)

- Polar Fleece Picnic Blanket



picnic blanket

For a \$500 donation

- Monthly on-air acknowledgment

For a \$1200 donation (or \$100/month sustainer)

- Weekly on-air acknowledgment

lately we've heard

Beethoven for Three

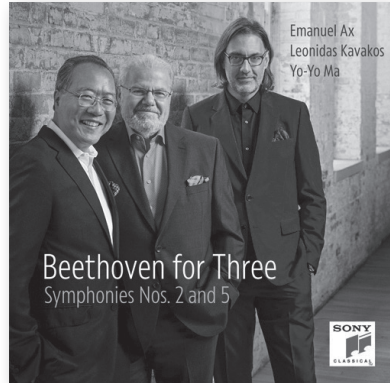
By Emanuel Ax, Leonidas Kavakos & Yo-Yo Ma

A review by Bethany Tillerson

Beethoven for Three features cellist Yo-Yo Ma, violinist Leonidas Kavakos, and pianist Emanuel Ax, performing arrangements of two of Beethoven's symphonies. This album brings the listener a fresh way to experience Beethoven's symphonies.

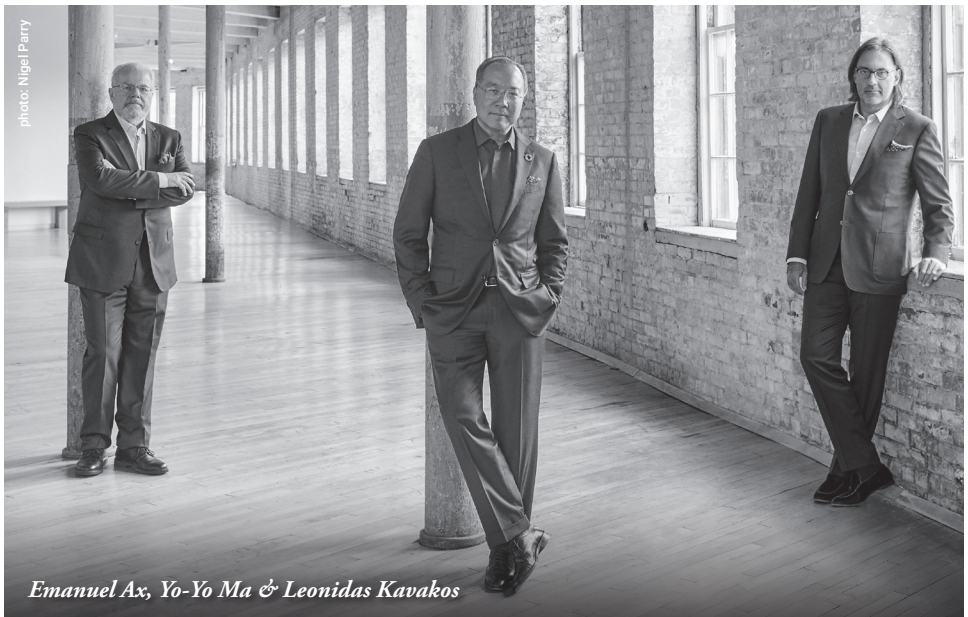
Ma, Kavakos, and Ax—all virtuoso soloists—collaborate for a seamlessly balanced concert performance. The emotional qualities of the symphonies are immense, from the adventure of the Second Symphony, written when Beethoven realized he was going deaf, to the defiant triumph of the Fifth. This is an album for those familiar with Beethoven's symphonies who want to hear them in a new light.

This arrangement of the Second Symphony by Beethoven's pupil, Ferdinand Reis, closely resembles Beethoven's piano trios of the same period. The Fifth Symphony is arranged by Colin Matthews in a new



commission. Both works seamlessly distribute the instrumentation, blending melody and more supportive harmonic lines, only to be taken up a few bars later by another performer. Hidden voices are revealed in new and exciting ways.

Beethoven's symphonies are transformed into something new here, with an emphasis on intimacy and relatability evident throughout the arrangements. *Beethoven For Three* is available as a thank-you gift for donations of \$120 or more to WCPE, The Classical Station. ♪



Emanuel Ax, Yo-Yo Ma & Leonidas Kavakos

Thank you for being a part of our Great Classical Music community.

Symphonies for the Soul: Classical Music to Cure Any Ailment

By Oliver Condry

Published by Cassell 2021

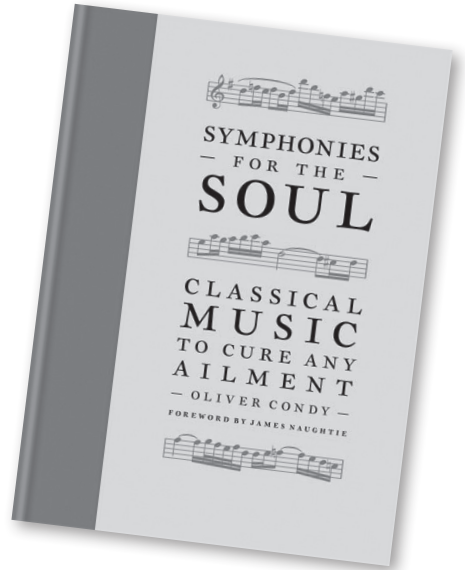
A review by Greysolynne Hyman

Whether you're new to classical music or you've been listening for many pleasurable years, this book is an entertaining engagement with the emotional aspects of art. We are all aware that certain pieces of music elicit a particular mood—Tchaikovsky's Symphony no. 6 immediately springs to mind. Its nickname, "Pathétique", is well-deserved.

Oliver Condry masterfully explains how the musical structure of a composition evokes an emotional response. In J.S. Bach's Prelude and Fugue in D Minor from *Book I of The Well-Tempered Clavier*, Condry points out that the "simple bass of bouncing quavers (eighth notes) forms the foundation underneath a babbling brook of semi-quavers (sixteenth notes)" that beautifully complement the fugue and evoke a sense of "delight" (pg. 98). This quotation is also an example of Condry's vivid descriptions of music.

The circumstances of a composer's life and consequent mood affect their work. For example, Franz Schubert penned his String Quartet no. 14 ("Death and the Maiden") while gripped by despair and pain, suffering from an incurable disease.

Oliver Condry also recommends antidotes for unwanted emotional states: e.g., listening to George Gershwin's optimistic *Rhapsody in Blue* to combat pessimism. For each mood or emotion, Mr. Condry has at least one suggestion of a specific performance. Less familiar composers' works are also included. Henry Litolf's Scherzo from his *Concerto Symphonique* appears under the heading "Joy". The time frame for classical music



and its effects on the soul extend into the twenty-first century. Stephan Moccio's *Tales of Solace*, composed in 2020, is found under "Isolation".

One of the most appealing features of this book is Mr. Condry's emphasis on the humanity of musicians, expressed in anecdotes about their experiences. Felix Mendelssohn's seasickness on a voyage during a tour of Europe is portrayed in the rapid crescendos and diminuendos of *The Hebrides Overture*. Ralph Vaughan Williams' passion for hiking through the English countryside is reflected in his *Norfolk Rhapsodies* and *The Lark Ascending*.

The charm of this book lies not only in its well-researched subject matter but also in its style of presentation—warm, witty, and easily accessible; therefore, this review concludes in the optimistic key of D Major.

Symphonies for the Soul is available in hardcover and eBook formats. ♪

May your winter be filled with Great Classical Music!

classical community

WCPE salutes its business partners! These public-spirited companies, organizations, and individuals have joined the friends of WCPE in supporting *Great Classical Music*.

Alamance Artisans Guild

320 E. Davis St.
Burlington, NC 27215
alamanceartisans.com

Ann Tatlock Books

The Name of the Stars
Iron Stream Media/New Hope
Publishers
anntatlock.com

Burning Coal Theatre

224 Polk St.
Raleigh, NC 27604
919-834-4001
burningcoal.org

Carolina Ballet

3401-131 Atlantic Ave.
Raleigh, NC 27604
919-719-0800
carolinaballet.com

Carolina Performing Arts

*Fulfilling UNC-Chapel Hill's
commitment to the arts since 2005*
Box office: 919-843-3333
carolinaperformingarts.org

Cary Ballet Company

3791 NW Cary Parkway
Cary, NC 27513
919-481-6509
caryballetcompany.org

Cary Skin Center

*Offering comprehensive services
through its Skin Cancer Center and
Aesthetic Surgery and Laser Center*
At the corner of NC 55 and
High House Rd.
Cary, NC 27519
919-363-7546
caryskincenter.com

Chamber Music of Raleigh

P.O. Box 2059
Raleigh, NC 27602
chambermusicraleigh.org

Chamber Orchestra of the Triangle

309 W. Morgan St.
Durham, NC 27701
chamberorchestraofthetriangle.org

Choral Society of Durham

120 Morris St.
Durham, NC 27701
919-560-2733
choral-society.org

Christ Baptist Church

400 Newton Rd.
Raleigh, NC 27615
919-573-5454
christbaptist.org

Christ the King Lutheran Church

600 Walnut St.
Cary, NC 27511
919-467-8989
christthekingcary.org

Ciampi Quartet

Ciampi-quartet@duke.edu

Cumberland Choral Society

cumberlandchoralsociety.org

Daniel Lee Buffinga Grandfather Clock Repair

919-345-4488
grandfatherclockrepairs.com

Duke Health

919-373-3515
dukehealth.org

Duke Performances

2010 Campus Dr., Box 90757
Durham, NC 27708
919-660-3356
dukeperformances.duke.edu

Duke University, Chapel Music

P.O. 90883
Durham, NC 27708
919-684-3855
chapel.duke.edu/music.html

Duke University, Dept. of Music

Box 90665
Durham, NC 27708
919-660-3300
music.duke.edu

Durham Savoyards

120 Morris St.
Durham NC 27701
durhamsavoyards.org

Eastern Music Festival

200 N. Davie St. Suite 11
Greensboro, NC 27401
336-333-7450
easternmusicfestival.org

Fair Planet Advisors

107 W. Jewett Blvd. Ste 100
White Salmon, WA 98672
509-398-8428
fairplanetadvisors.com

Greensboro Symphony

200 N. Davie St. Suite 301
Greensboro, NC 27401
336-335-5456
greensborosymphony.org

Halle Cultural Arts Center

237 N. Salem St.
Apex, NC 27502
919-249-1120

Tom Keith & Associates, Inc.

*Serving the Carolinas for over 46
years in the valuation of corpora-
tions, partnerships, professional
practices, and sole proprietorships*
121 S. Cool Spring St.
Fayetteville, NC 28301
910-323-3222
keithvaluation.com

Louisburg College

501 North Main Street
Louisburg, NC 27549
www.jpacarts.com

NC Master Chorale

227 W. Martin St.
Raleigh, NC 27601
919-856-9700
ncmasterchorale.org

North Carolina Museum of Art

2110 Blue Ridge Rd.
Raleigh, NC 27607
919-839-6262
ncartmuseum.org

North Carolina Opera

612 Wade Ave. Suite 100
Raleigh, NC 27605
919-792-3850
ncopera.org

North Carolina Symphony

3700 Glenwood Ave. Suite 130
Raleigh, NC 27612
919-733-2750
ncsymphony.org

Oak City Voices

theoakcityvoices.org

Paderewski Festival of Raleigh

Dr. Alvin M. Fountain of Raleigh, organizer
103 Birkhaven Dr.
Cary, NC 27518-8942

The Radix

2594 Spurwood Ct.
Apex, NC 27502
919-362-7359
theradix.org

Raleigh Community Orchestra

6339 Glenwood Ave.
Raleigh, NC 27612
919-807-1487
raleighcommunityorchestra.org

Raleigh Ringers

www.rr.org

Raleigh Symphony Orchestra

2424 Wycliff Rd. Suite 102A
Raleigh, NC 27607
919-546-9755
raleighsymphony.org

Keith Robertson

9121 Anson Way Suite 200
Raleigh, NC 27615
919-258-2984
keithrobertson-ea.com

The Senior Network

954-666-2040
info@theseniornetwork.org

Triangle Brass Band

P.O. Box 14344
Research Triangle Park, NC 27709
trianglebrass.org

Triangle Landscape Lighting

P3109 Gresham Lake Rd.
Raleigh, NC 919-872-3632
trianglelandscapelighting.com

Triangle Wagner Society

919-383-5998
Triangelwagnersociety.com

Triangle Wind Ensemble

P.O. Box 701
Cary, NC 27512
919-960-1893
trianglewind.org

UNC Honors

106 Stadium Drive
Chapel Hill, NC 27514
honorscarolina.unc.edu

Vocal Arts Ensemble

Rodney Wynkoop
vocalartsensemble.org

Voices of Chapel Hill

P. O. Box 3011
Chapel Hill, NC 27515
voiceschapelhill.org

Andrew Waggoner, Composer

Come Out at the Fruit (Durham)
andrewwaggoner.com

Wake Forest Garden Club

Membership opportunities/
Upcoming events
wfgardenclub.org

Wake Radiology

Over 60 years of comprehensive radiology care and advanced imaging for your family
3949 Browning Pl.
Raleigh, NC 27609
919-232-4700
wakerad.com

Women's Voices Chorus

P. O. Box 2854
Chapel Hill, NC 27515
womensvoiceschorus.org

Classical Events and Promotional Partners*

Burning Coal Theatre Company

burningcoal.org

Carolina Ballet

carolinaballet.com

Chamber Music Raleigh

chambermusicraleigh.org

Chamber Orchestra of the Triangle

chamberorchestraofthetriangle.org

Duke Chapel Music

chapel.duke.edu

Fayetteville Symphony Orchestra

Fayettevillesymphony.org

Joe Van Gogh

Specialty Coffee Roasters
joevangogh.com

***North Carolina Opera**

ncopera.org

***North Carolina Symphony**

ncsymphony.org

The Senior Network

954-666-2040
info@theseniornetwork.org

***Wake Forest Chamber of Commerce**

wakeforestchamber.org

Wake Forest Garden Club

wfgardenclub.org

Women's Voice Chorus

womensvoicechorus.org

For information on becoming a business partner, contact businesssupport@TheClassicalStation.org or 919-556-5178.

DONOR SPOTLIGHT

I'm an Army brat and moved every few years until middle school, when we settled on Chicago's North Shore in the early 1960s. There, I found WFMT and my love of classical music was born. When my wife Carol and I moved to Chapel Hill, NC, in 1986, we quickly discovered WCPE, and it has been our musical home ever since. We immediately became donors, and sustaining members shortly thereafter.

At home, all we need to do is fix our radio on 89.7 FM. The Classical Station has been my constant companion in the car. Thanks to its multiple streaming formats, back in the pre-pandemic days when we physically traveled for work and meetings, I could continue to listen wherever I was on planet Earth. As the news cycle becomes ever more frenetic and the stories more repetitive and dystopian, WCPE provides us a respite of peace and beauty which we sorely need. Long may she prosper and broadcast.

– Brad Walters

What You're Saying

I found WCPE on the radio 10 years ago; I've been listening on the Web all over the country since then. It's on when I wake up until I go to bed. I've learned a lot—keep teaching about music! Thank you! (*Dallas in Lewisville, TX*)

I wanted to say how much I enjoy listening in my car. I live in Williamsport, PA. The music is always calming and delightful, and keeps me centered and not bothered by the world outside. Thanks for being there for me! (*LeeAnn in Pennsylvania*)

I listened to WQXR in NY for years when I lived on Long Island. We retired to NC and I found this channel. As North Carolina is my home, WCPE is now my home classical music station! (*Eileen in Durham, NC*)

I bought a satellite radio when we moved from Durham to Wilmington just so we could keep listening to WCPE. We love it! (*Barbara in Wilmington, NC*)

Give the gift of Great Classical Music by sending a gift membership to your friends and loved ones! We'll send a lovely card announcing their new membership, and they'll receive *Quarter Notes* through the next year

WCPE in Raleigh, NC, is licensed by the Federal Communications Commission to broadcast on 89.7MHz with 100,000 watts.

WCPE is the flagship of The Classical Station (TCS). TCS's programming is carried on the following FM channels in North Carolina and Virginia:

- W202BQ on 88.3 MHz (Aberdeen, Pinehurst, Southern Pines)
- W205CA on 88.9 MHz (Foxfire Village)
- W210BS on 89.9 MHz (New Bern)
- WZPE on 90.1 MHz (Bath)
- WURI on 90.9 MHz (Manteo)
- W216BE on 91.1 MHz (Buxton)
- W237CM on 95.3 MHz (Fayetteville)
- W247BG on 97.3 MHz (Greenville)
- W275AW on 102.9 MHz (Danville, VA)
- W292DF on 106.3 MHz (Martinsville, VA)

TCS's programming is carried on partner stations across America listed at: <https://theclassicalstation.org/listen/partner-stations/>.

TCS's programming is carried on cable systems across America.

TCS streams on the Internet in Windows Media, aac, MP3, and Ogg Vorbis at: <https://theclassicalstation.org/listen/>.

TCS streams on the Internet to IOS and Android smartphone apps.

TCS grants blanket permission to retransmit and rebroadcast its programming in real time without charge or obligation to WCPE, to any entity and/or anyone who may legally disseminate programming to the general public. This permission includes AM, FM, and television stations and translators; cable TV systems; closed-circuit TV systems; common carriers; direct-broadcast satellite systems; Internet service providers and audio services; multipoint distribution systems; pay-TV systems; subscription TV systems; satellite master antenna TV systems; and similar licensed or authorized entities.

It is a violation of law to record copyrighted music or performances without authorization; please use TCS's programs and services properly.

Thank you for being a part of our Great Classical Music community.

Let Me Help!

Fill out this form and send it to WCPE.
Thank you for your support!

name

address

city

state

zip

telephone

Yes! I want to support WCPE with a:

single donation or monthly donation of:

\$10 \$25 \$50 \$100

\$250 \$500 Other \$_____

I would like to use my gift of \$300 or more as an Angel Challenge.

Please use:

My full name My first name & city

I would like to be contacted about leaving WCPE in my estate plans.

My check is enclosed, or

Please charge to my:

Visa

MasterCard

AmEx

Discover

card number

print your name as it appears on your card

expiration date

signature

I want to be a WCPE volunteer.

My matching gift employer is:

Please mail to:

WCPE

PO Box 828

Wake Forest, NC 27588



Non-Profit Org.
US Postage
PAID
Permit No. 1348
Raleigh, NC

P.O. Box 828
Wake Forest, NC 27588

ELECTRONIC SERVICE REQUESTED

Dated material—do not delay

PLEASE NOTE:

Don't forget to renew your WCPE membership before the date shown below.



Download our app!

- Open your camera app.
- Focus on the QR code to the left.
- Follow the instructions on your screen to download app.



Metropolitan Opera's *The Hours*

photo courtesy of The Metropolitan Opera



Great Classical Music, 24 Hours A Day