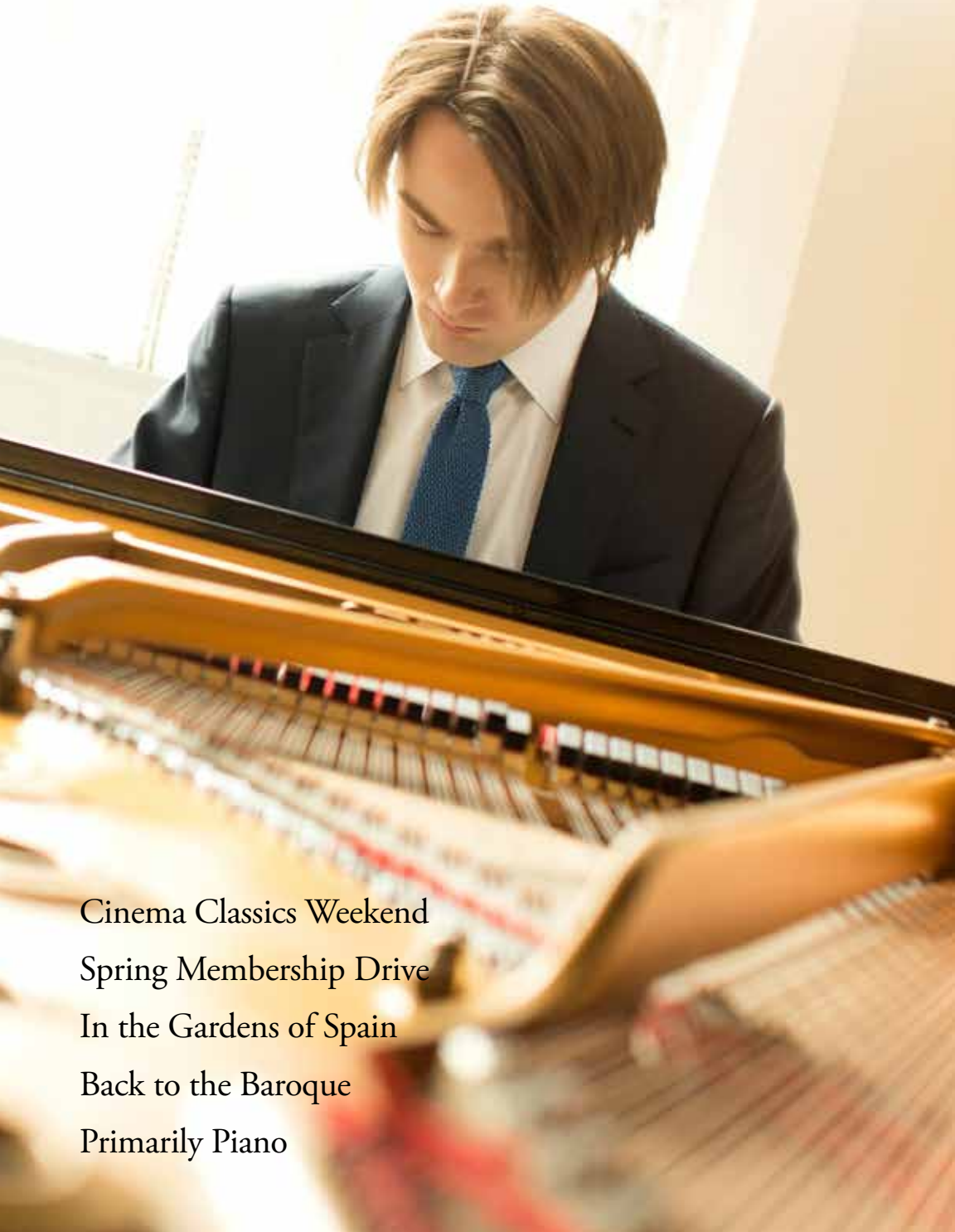


March • April • May

# Quarter Notes

WCPE Radio, The Classical Station • Spring 2021



Cinema Classics Weekend

Spring Membership Drive

In the Gardens of Spain

Back to the Baroque

Primarily Piano

# table of contents

## WCPE Daily Schedule

Weekdays	
12:00 midnight	<i>Sleepers, Awake</i> with Sherman Wallace
5:30 a.m.	<i>Rise and Shine</i> with Kristine Bellino
10:00 a.m.	<i>Classical Café</i>
9:00 a.m.–10:00 p.m.	Fridays: All-Request Friday
1:00 p.m.	<i>As You Like It</i>
4:00 p.m.	<i>Allegro</i> with Dick Storck
5:30 p.m.	5:30 waltz
7:00 p.m.	Mondays through Wednesdays and Fridays: <i>Concert Hall</i> with Andy Huber, Warner Hall, Larry Hedlund, Bruce Matheny, Mark Schreiner, Christopher Scoville, and a variety of volunteer hosts Thursdays: <i>Thursday Night Opera House</i> with Bob Chapman
8:00 p.m.	Mondays: <i>Monday Night at the Symphony</i> with Andy Huber, and a variety of hosts
10:00 p.m.	<i>Music in the Night</i> with Tony Waller, Mike Huber, Bob Chapman, and a variety of hosts
Saturdays	
12:00 midnight	<i>Sleepers, Awake</i> with Haydn Jones
6:00 a.m.	<i>Weekend Classics</i> with Lyle Adley-Warrick, Helen Halva, Peggy Powell, Joyce Kidd, and a variety of volunteer hosts
6:00 p.m.	<i>Saturday Evening Request Program</i> with Haydn Jones
Sundays	
12:00 midnight	<i>Sleepers, Awake</i>
6:00 a.m.	<i>Weekend Classics</i> with Chuck Till and a variety of hosts
7:30 a.m.	<i>Sing for Joy</i> with Bruce Benson
8:00 a.m.	<i>Great Sacred Music</i> with Rob Kennedy
12:00 p.m.	<i>Weekend Classics</i> with Greysolynne Hyman, Bruce Huffine, Jay Pierson, and a variety of volunteer hosts
6:00 p.m.	<i>Preview</i> with David Jeffrey Smith, Steve Thebes, and a variety of hosts
9:00 p.m.	<i>Wavelengths</i> with Ed Amend
10:00 p.m.	<i>Peaceful Reflections</i> with Ed Amend

## Quarter Notes®

WCPE's member magazine  
Vol. 43, no. 1

WCPE's mission is to expand the community of classical music lovers by sharing classical music with everyone, everywhere, at any time. We entertain, educate, and engage our audience with informative announcers, programs, and publications. We strive to make it easy to appreciate and enjoy Great Classical Music.

Editor: Christina Strobl Romano  
Designer: Deborah Cruz  
Printer: Chamblee Graphics

## WCPE Staff

Deborah S. Proctor ..... General Manager & Chief Engineer  
Dean Baldwin ..... National Business Dev't. Director  
Kristine Bellino ..... Program Director;  
Host of *Rise and Shine*  
Bob Chapman ..... Host of *Thursday Night Opera House*  
Gregg Cockroft ..... Facilities Engineer  
Adrienne DiFranco ..... Accounting/Member Services  
Elizabeth Elliott ..... Production Director;  
Assistant Music Director\*  
John Graham ..... Director of Engineering  
Tanja Greaves ..... Thank-You Gift and Volunteer Director  
Haydn Jones ..... Announcer  
Rob Kennedy ..... Host of *Great Sacred Music* and Digital Content Creator  
Joyce Kidd ..... Announcer  
Naomi Lambert ..... Announcer  
Dan McHugh ..... Director of Member Services\*  
Mary Moonen ..... Underwriting Dev't. Director;  
Traffic Manager  
Susan Nunn ..... Member Services;  
Web Team Coordinator  
Stu Pattison ..... Data Services  
Nick Robinson ..... Announcer  
Christina Strobl Romano ..... Publications Editor  
Dick Storck ..... Network Operations Director;  
Host of *Allegro*  
Sherman Wallace ..... Host of *Sleepers Awake*  
William Woltz ..... Music Director\*  
\*This staff member is also an announcer.

©Copyright 1978–2021, WCPE Radio, Raleigh, NC. All rights reserved. All material published or disseminated by WCPE, The Classical Station, except those owned or copyrighted by another entity, is copyrighted by WCPE at the date of publication.

*Allegro; As You Like It; Classical Café; Quarter Notes; Rise and Shine; Sleepers, Awake!*; and *WCPE* are registered or pending trademarks or service marks of WCPE.

**WCPE**  
**P.O. Box 828**  
**Wake Forest, NC 27588**  
**800-556-5178**

**Membership:** membership@theclassicalstation.org  
**Editor:** christina\_romano@theclassicalstation.org  
**Website:** theclassicalstation.org



## Meet Your Host: Mark Schreiner

**How long have you been an announcer at WCPE?** I've been a volunteer announcer since June 2015. I wanted to be a part of the commitment to a live host in the studio and enjoy every minute behind the microphone.

**Do you have any broadcasting stories to share with us?** Recently, a listener called with an unusual request, to help him finish a crossword puzzle. Luckily, I had seen the opera in question and was able to give him the correct answer!

**What is your favorite genre of music?** My favorites are the great American musical forms: jazz, ragtime, string band, brass band, and Western music. I also have a love for the work of 20th century British composers.

**Do you have a background in music performance?** I studied brass instruments starting in fifth grade, through the wonderful music program in my local public school system. I played the euphonium through middle school and high school and have wonderful memories playing in the school's symphonic and marching bands. These days, I'm learning soprano ukulele at home with my daughter.

**What concerts stand out in your memory?** My most exciting recent adventure memory was attending the opening night of *Der Rosenkavalier* at the Lincoln Center in New York at Renée Fleming's final opening-night appearance as the Marschallin. It was a wonderful performance.

**Is there anything else your listeners might enjoy knowing about you?** I love learning about music, composers, and performers and sharing what I learn with listeners. WCPE's music library is a treasure trove.

Meet Your Host .....	1
Home Sweet Home .....	2
March Calendar .....	3
April Calendar .....	4
May Calendar .....	5
Spring Highlights.....	6
Mondays This Quarter	
<i>My Life in Music, Renaissance Fare</i> .....	8
<i>Monday Night at the Symphony</i> .....	9
Opera House .....	10
Sundays This Quarter	
<i>Great Sacred Music</i> .....	11
<i>Preview</i> .....	12
<i>Wavelengths, and</i>	
<i>Peaceful Reflections</i> .....	13
Program Listings .....	14
Thank-you Gifts.....	16
Lately We've Read	
<i>The Way of Bach: Three Years with the</i>	
<i>Man, the Music, and the Piano</i>	
<i>By Dan Moller</i> .....	28
WCPE Education	
Fund News .....	29
Classical Community.....	30
Classical Events and	
Promotional Partners .....	31
What You're Saying .....	32
Membership Corner .....	32

## On the cover:

Daniil Trifonov, featured on  
*A Primarily Piano* Weekend

*Photo by Dario Acosta*

## Another year gone by!

All in all, I am not sorry to see 2020 come to a close. It was a sad year for many. We are trying to look at the good things which also happened—we can continue to offer you Great Classical Music around the clock, whenever you desire it; especially for the times when you need it.

The impact of the pandemic: all of us are affected. We have all spent more time indoors, and many people have told us that our Sunday morning programs have become their church service. Many people are becoming new listeners. They turn to us for a break from news reports; to many, we are a place of peace and solace. In the evenings, we are one of the most listened-to stations in our coverage area, many times finding ourselves in the number-one position in the radio listening report.

December donations: A big "thank you" to everyone who came to the rescue and made a December donation to help make up that critical shortfall which accumulated throughout 2020! If you didn't ask for a thank-you gift, you may still do so by calling our Membership department any weekday during business hours at 800-556-5178, and we will help you to choose. We even have some special gifts which were not publicized because of limited quantity. So this is your "limited to members only" open door to select from our rare and vintage selection. I am told we even have some of our 30th anniversary gifts from 2008 in pristine condition. When these are gone, they really are gone; this truly is a last-chance special offer! Tell a friend! Our future depends exclusively on supporters like you working together to tell others about the beautiful music they can find on WCPE. Speak to others about our station; help them learn more about



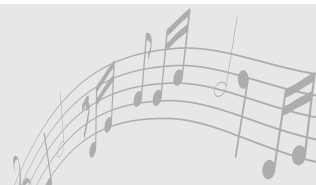
Deborah S. Proctor  
General Manager

our unique classical programming and the ways it's available 24 hours a day. If you have friends who live in an area which has lost its classical radio station, tell them to visit our website at [TheClassicalStation.org](http://TheClassicalStation.org), where we stream our music 24-7, post our program schedule, and publish lots of engaging material to enhance your listening experience. We want to make Great Classical Music available to everyone, and your good word will help bring WCPE to the world!

Spring membership drive: Our drive begins in a few weeks, on Friday, March 19, and will continue through Sunday, March 28. Hopefully, many newfound listeners will be making their first contributions. We're counting on everyone's support for another six months of Great Classical Music and hope that you'll encourage your friends to become members, too! We can't do it without you.

Most sincerely,

Thank you for being a part of our  
Great Classical Music community.



Jerzy Maksymiuk b. 1936 (85th birthday)

photo: Ignacy Paderewski

1	<b>Monday</b>	Frédéric Chopin 1810 Lorraine Hunt Lieberson 1954
2	<b>Tuesday</b>	Bedřich Smetana 1824 Celedonio Romero 1913
3	<b>Wednesday</b>	
4	<b>Thursday</b>	Antonio Vivaldi 1678 Bernard Haitink 1929
5	<b>Friday</b>	<i>All-Request Friday</i> Arthur Foote 1853 Heitor Villa-Lobos 1887 Barry Tuckwell 1931 (90th anniversary of birth) Richard Hickox 1948
6	<b>Saturday</b>	Yannick Nezet-Seguin 1975 Lorin Maazel 1930
7	<b>Sunday</b>	Maurice Ravel 1875 Denyce Graves 1964
8	<b>Monday</b>	CPE Bach 1714 Alan Hovhaness 1911 Pepe Romero 1944
9	<b>Tuesday</b>	Samuel Barber 1910 Thomas Schippers 1930
10	<b>Wednesday</b>	Pablo de Sarasate 1844 Charles Groves 1915
11	<b>Thursday</b>	
12	<b>Friday</b>	<i>All-Request Friday</i> Thomas Arne 1710
13	<b>Saturday</b>	
	<b>Sunday</b>	<i>Daylight Saving Time begins</i> Georg Philipp Telemann 1681 Johann Strauss Sr. 1804
15	<b>Monday</b>	Eduard Strauss 1835
16	<b>Tuesday</b>	Roger Norrington 1934 Teresa Berganza 1935 Claus Peter Flor 1953
17	<b>Wednesday</b>	<i>St. Patrick's Day</i>

cinema classics  
weekend

18	<b>Thursday</b>	Nikolai Rimsky-Korsakov 1844 Nobuko Imai 1943 James Conlon 1950
19	<b>Friday</b>	<i>Spring Membership Drive</i> Myung-Wha Chung 1944
20	<b>Saturday</b>	<i>Spring begins</i> Sviatoslav Richter 1915
21	<b>Sunday</b>	J.S. Bach 1685 Modest Mussorgsky 1839 Artur Grumiaux 1921 (100th anniversary of birth) Erich Kunzel 1935
22	<b>Monday</b>	Hamish MacCunn 1868
23	<b>Tuesday</b>	Franz Schreker 1878
24	<b>Wednesday</b>	Byron Janis 1928
25	<b>Thursday</b>	Arturo Toscanini 1867 Béla Bartók 1881 Zdeněk Košler 1928
26	<b>Friday</b>	Pierre Boulez 1925 Kyung-Wha Chung 1948
27	<b>Saturday</b>	<i>Passover begins at sunset</i> Vincent d'Indy 1851 Ferde Grofé 1892 Mstislav Rostropovich 1927
28	<b>Sunday</b>	<i>Palm Sunday</i> Rudolf Serkin 1903
29	<b>Monday</b>	William Walton 1902 E. Power Biggs 1906
30	<b>Tuesday</b>	
31	<b>Wednesday</b>	Franz Josef Haydn 1732

# april calendar

1	<b>Thursday</b> <i>April Fools' Day</i>
	Ferruccio Busoni 1866 Sergei Rachmaninoff 1873
2	<b>Friday</b> <i>Good Friday, All-Request Friday</i>
	Franz Lachner 1803
3	<b>Saturday</b>
	Mario Castelnuovo-Tedesco 1895 Garrick Ohlsson 1948
4	<b>Sunday</b> <i>Easter</i>
	Vladimir Jurowski 1972
5	<b>Monday</b>
	Louis Spohr 1784 Herbert von Karajan 1908
6	<b>Tuesday</b>
	André Previn 1929 Pascal Rogé 1951 (70th birthday)
7	<b>Wednesday</b>
	Robert Casadesus 1899 Leif Ove Andsnes 1970
8	<b>Thursday</b>
	Giuseppe Tartini 1692 Adrian Boult 1889
9	<b>Friday</b> <i>All-Request Friday</i>
	Antal Doráti 1906 Jerzy Maksymiuk 1936 (85th birthday)
10	<b>Saturday</b>
	Yefim Bronfman 1958
11	<b>Sunday</b>
	Jean-Joseph Mouret 1682 Alberto Ginastera 1916
12	<b>Monday</b>
	Josef Lanner 1801 Jean-François Paillard 1928 Montserrat Caballé 1933
13	<b>Tuesday</b>
	William Sterndale Bennett 1816 John Contiguglia 1937 Richard Contiguglia 1937
14	<b>Wednesday</b>
	Paavo Berglund 1929 Julian Lloyd Webber 1951 (70th birthday) Mikhail Pletnev 1957 Alisa Weilerstein 1982
15	<b>Thursday</b>
	Neville Marriner 1924

16	<b>Friday (All-Request Friday)</b>
	Federico Mompou 1893 Dennis Russell Davies 1944
17	<b>Saturday</b>
	Artur Schnabel 1882 Gregor Piatigorsky 1903 Adolphus Hailstork 1941 (80th birthday) Cristina Ortiz 1950
18	<b>Sunday</b>
	Franz von Suppé 1819 Leopold Stokowski 1882 Jean Guillou 1930
19	<b>Monday</b>
	Murray Perahia 1947 Yan Pascal Tortelier 1947
20	<b>Tuesday</b>
	John Eliot Gardiner 1943
21	<b>Wednesday</b>
	Randall Thompson 1899 Stanley Ritchie 1935
22	<b>Thursday</b> <i>Earth Day</i>
	Giuseppe Torelli 1658 Ethel Smyth 1858 Yehudi Menuhin 1916 Jukka-Pekka Saraste 1956 (65th birthday) Franz Welser-Möst 1960
23	<b>Friday</b> <i>All-Request Friday</i>
	Ruggero Leoncavallo 1857
24	<b>Saturday</b>
	John Williams (guitarist) 1941 (80th birthday)
25	<b>Sunday</b>
26	<b>Monday</b>
27	<b>Tuesday</b>
	Friedrich von Flotow 1812 Sergei Prokofiev 1891
28	<b>Wednesday</b>
	Yoav Talmi 1943
29	<b>Thursday</b>
	Thomas Beecham 1879 Malcolm Sargent 1895 Zubin Mehta 1936 (85th birthday)
30	<b>Friday</b> <i>All-Request Friday</i>
	Franz Lehár 1870 Robert Shaw 1916

# may calendar

1	<b>Saturday</b>
	Hugo Alfvén 1872 Walter Susskind 1913
2	<b>Sunday</b>
	Alessandro Scarlatti 1660 Hans Christian Lumbye 1810 Valery Gergiev 1953
3	<b>Monday</b>
	Virgil Fox 1912
4	<b>Tuesday</b>
	Emil von Řezníček 1860 Gennadi Rozhdestvensky 1931 (90th anniversary of birth) Enrique Bátiz 1942
5	<b>Wednesday</b> <i>Cinco de Mayo</i>
	Hans Pfitzner 1869 Agustín Barrios 1885 Cyprien Katsaris 1951 (70th birthday)
6	<b>Thursday</b>
7	<b>Friday</b> <i>All-Request Friday</i>
	Johannes Brahms 1833 Peter I. Tchaikovsky 1840
8	<b>Saturday</b>
	Karl Stamitz 1745 Louis Moreau Gottschalk 1829
9	<b>Sunday</b> <i>Mother's Day</i>
	Carlo Maria Giulini 1914
10	<b>Monday</b>
	Jean-Marie Leclair 1697 Ani Kavafian 1948
11	<b>Tuesday</b>
	Anatol Liadov 1855 William Grant Still 1895
12	<b>Wednesday</b>
	Jules Massenet 1842 Gabriel Fauré 1845
13	<b>Thursday</b>
	Arthur Sullivan 1842 Jane Glover 1949
14	<b>Friday</b> <i>All-Request Friday</i>
	Otto Klemperer 1885 Alan Marks 1949
15	<b>Saturday</b> <i>Armed Forces Day</i>
	Claudio Monteverdi 1567 Michael William Balfe 1808 Lars-Erik Larsson 1908 Anne Akiko Meyers 1970

16	<b>Sunday</b>
	Andrew Litton 1959
17	<b>Monday</b>
	Erik Satie 1866 Sándor Végh 1912 Dennis Brain 1921 (100th anniversary of birth) Paul Crossley 1944
18	<b>Tuesday</b>
	Karl Goldmark 1830 Clifford Curzon 1907
19	<b>Wednesday</b>
20	<b>Thursday</b>
21	<b>Friday</b> <i>All-Request Friday</i>
	Maurice André 1933 Heinz Holliger 1939
22	<b>Saturday</b>
	Richard Wagner 1813
23	<b>Sunday</b>
	Alicia de Larrocha 1923 John Browning 1933
24	<b>Monday</b> <i>Victoria Day (Canada)</i>
	Paul Paray 1886 Hans-Martin Linde 1930
25	<b>Tuesday</b>
26	<b>Wednesday</b>
	Vlado Perlemuter 1904
27	<b>Thursday</b>
	Jacques Halévy 1799 Joachim Raff 1822
28	<b>Friday</b> <i>All-Request Friday</i>
	Dietrich Fischer-Dieskau 1925
29	<b>Saturday</b>
	Isaac Albéniz 1860 Erich Korngold 1897 Karl Münchinger 1915
30	<b>Sunday</b>
	Gustav Leonhardt 1928 Zoltán Kocsis 1952
31	<b>Monday</b> <i>Memorial Day (observed)</i>
	Marin Marais 1656 Louise Farrenc 1804

in the gardens of spain weekend

primarily piano weekend

back to the baroque weekend

memorial day weekend



Jerry Goldsmith featured during  
*A Cinema Classics Weekend*



Ennio Morricone featured during  
*A Cinema Classics Weekend*

By William Woltz

## The Metropolitan Opera Saturdays through June 5

The Met continues with weekly pre-recorded broadcasts from Lincoln Center, including Mozart's *Don Giovanni* on March 27, Puccini's *La Bohème* on April 10, and Wagner's *Tristan und Isolde* on May 15. Mary Jo Heath is your host.

## Women's History Month March

We're seeing new interest in the works of female composers, women throughout history who have pursued their art while juggling family obligations and the expectations of a not always supportive society. This month we'll feature historic composers including Louise Farrenc (b. 1804), Florence Beatrice Price (b. 1887), and Fanny Mendelssohn-Hensel (b. 1805). And we'll have a special focus on today's history-makers, such as Gabriela Lena Frank, Anna Clyne, and Angélica Négron during The Classical Station's Wavelengths, Sundays at 9:00 p.m. eastern.



Anna Clyne,

photo: Jennifer Taylor

## A Cinema Classics Weekend March 13–14

A compelling soundtrack is a large part of what makes a film great. We'll feature the music that has enriched your cinematic experience, including classical favorites used in beloved movies and music written specifically for the silver screen. Make some popcorn and settle in for a great weekend with composers such as Bernard Herrmann, Jerry Goldsmith, Elmer Bernstein, and John Williams.

## WCPE Spring Membership Drive March 19–28

Your financial support helps us share Great Classical Music with listeners everywhere. Make your gift at [TheClassicalStation.org](http://TheClassicalStation.org), or mail your silent pledge to WCPE Radio, PO Box 828, Wake Forest, NC 27588.

## Passover March 27

WCPE airs a special program of music at 6:00 p.m. to mark the beginning of Passover at sunset this day.

## Easter April 4

Celebrate with Rob Kennedy, host of WCPE's Great Sacred Music, beginning at 8:00 a.m.

## In the Gardens of Spain Weekend April 10–11

Let The Classical Station take you on a musical excursion to this sunny, magical land of Moorish castles, passionate folk dances, and classical guitar. With compositions by Rodrigo, de Falla, Tárrega, Albéniz, Granados, and more—we're sure you'll find something to enjoy.

## A Back to the Baroque Weekend April 24–25

The musical baroque (1600–1750) was an era of exploration, with music written to glorify God while pushing the boundaries of harmonic invention and human virtuosity. We'll feature the giants of this fascinating period—Bach, Handel and Vivaldi—along with the contributions of Telemann, Albinoni and Purcell, Buxtehude, the Scarlatti family, and more.

## A Primarily Piano Weekend May 8–9

A piano is a remarkable contraption, a wooden box holding metal strings, hammers and levers, iron and felt, wedged into a self-contained orchestra. We'll feature today's leading performers, among them Orli Shaham, Angela Hewitt, and Daniil Trifonov, along with established masters of the 20th century including Van Cliburn, Martha Argerich, and Maurizio Pollini.

## Memorial Day Weekend May 29–31

An extended weekend celebrating American composers and performers, with lots of patriotic music on Monday to honor the men and women who have given so much for our country.

## All-Request Fridays Saturday Evening Request Program

Thank you for making our request programs a success! The Classical Station now gives you two weekly opportunities to ask for your classical music favorites. All-Request Friday is from 9:00 a.m. until 10:00 p.m., and the Saturday Evening Request Program is from 6:00 p.m. until midnight. Submit your advance requests at [TheClassicalStation.org](http://TheClassicalStation.org), or call WCPE at 919.556.0123.



Fazil Say, featured during  
*A Primarily Piano Weekend*



Maurizio Pollini, featured during  
*A Primarily Piano Weekend*



Orli Shaham, featured during  
*A Primarily Piano Weekend*



George Li, featured during  
*A Primarily Piano Weekend*



Don't forget to like our Facebook pages! Look for Quarter Notes as well as WCPE The Classical Station.

# mondays this quarter

## My Life in music

First Mondays at 7:00 p.m.  
Second Sundays at 5:00 p.m.  
(All times eastern)  
With host Rob Kennedy

My Life in Music is a monthly program that showcases professional musicians who share stories about their careers and their work. Interwoven with the conversations are musical selections which illustrate the talking points. Join us on the first Monday of each month at 7:00 p.m. eastern and again the following Sunday at 5:00 p.m. This quarter our guests are composer Carson Cooman, organist Peter Richard Conte, and conductor José Serebrier.



photo: Burkhard Schaefer

**Carson Cooman**  
**Composer**  
March 1



photo: Peter Richard Conte

**Peter Richard Conte**  
**Organist**  
April 5



photo: Clive Barcia

**José Serebrier**  
**Conductor**  
May 3

# mondays this quarter

## Monday Night at the symphony

By William Woltz  
Mondays at 8:00 p.m. (eastern)

Every Monday on TheClassicalStation we devote two hours to a great orchestra, featuring classic performances from our music library.

Highlights in the coming weeks include the Israel Philharmonic, the Scottish Chamber Orchestra, and the Bavarian Radio Symphony, plus American favorites including the Seattle Symphony, the Chicago Symphony, and (on Memorial Day) the Cleveland Orchestra.

### March

- 1 Israel Philharmonic
- 8 Seattle Symphony Orchestra
- 15 Dresden State Orchestra
- 22 Show your support for Monday Night at the Symphony during The Classical Station's Spring Membership Drive.
- 29 Royal Philharmonic Orchestra

### April

- 5 Vienna Philharmonic
- 12 Chicago Symphony Orchestra
- 19 Academy of St. Martin in the Fields
- 26 Minnesota Orchestra

### May

- 3 Cincinnati Symphony Orchestra and Pops
- 10 Scottish Chamber Orchestra
- 17 Bavarian Radio Symphony
- 24 Detroit Symphony Orchestra
- 31 Cleveland Orchestra



photo: Nick Rutter

*Royal Philharmonic Orchestra*

# Renaissance Fare

Second Mondays at 7:00 p.m.  
Third Sundays at 5:00 p.m.  
(All times eastern)  
With host George Douglas

The month of March is probably best known in Roman history for the Ides of

March, March 15, when Julius Caesar was assassinated in 44 BCE. In recognition of emperors and kings, Renaissance Fare will concentrate on the music of the royal courts of Europe. Music became more accessible to the common person during the Renaissance, but the great palaces and churches were the primary source of great musicians and composers. Tune in on Monday, March 8, at 7:00 p.m. There will be a repeat performance on Sunday, March 14, at 5:00 p.m., the eve of the Ides of March.

Renaissance Fare in April celebrates the beauty and hope of spring with music that touches on some of the big events of that month, such as Easter and Earth Day. Join me for our April edition on Monday, April 12, at 7:00 p.m. and/or Sunday, April 18, at 5:00 p.m.

Summer is a comin', and there are many great Renaissance tunes that celebrate this most popular season of the year. We will dance around the May pole and celebrate the lusty month of May. Be sure to join us on Monday, May 10, at 7:00 p.m. and/or Sunday, May 16, at 5:00 p.m.



## THURSDAY • NIGHT OPERA HOUSE

Thursdays at 7:00 p.m. (eastern)  
With host Bob Chapman

### March 4 Mussorgsky's *Boris Godunov*

Boris Godunov (Petrov) murdered Dmitri to become Czar of Russia. The young monk Grigori (Ivanovsky) plans to take over Russia by pretending to be the old czar's dead son.

### March 11 Verdi's *Aida*

Enslaved Ethiopian princess Aida (Harteros) competes with Egyptian princess Amneris (Semenchuk) for the love of conquering warrior Radamès (Kaufmann).

### March 18 Ward's *The Crucible*

Arthur Miller's McCarthy-era play about the 1692 Salem witch trials won the 1962 Pulitzer Prize for Durham composer Robert Ward (1917–2013). (From the Ruocchio Archives.)

### March 25 Spring Membership Drive

Bob Chapman and Rob Kennedy play arias, ensembles, and choruses as you pledge your support for the Thursday Night Opera House.

### April 1 Wagner's *Parsifal*

Amfortas (Van Dam), the keeper of the Holy Grail, has been seduced by Kundry (Meier) and wounded by Klingsor (Kannen). Parsifal (Jerusalem) learns from Gurnemanz (Hölle) that he may be the "perfect fool" who can heal Amfortas.

### April 8 Handel's *Agrippina*

Absent her husband Claudio (Miles), Agrippina (Jones) schemes to ensure the succession of son Nerone (Ragin) rather than the emperor's choice, Ottone (Chance), whose fiancée Poppea (Brown) tries to thwart the empress.

### April 15 Bizet's *Les Pêcheurs de Perles* (*The Pearl Fishers*)

The friendship of Ceylonese fishermen Nadir (Aler) and Zurga (G. Quilico) is threatened by the reappearance in their lives of the priestess Leïla (Hendricks). (From the Ruocchio Archives.)

### April 22 Romberg's *The Student Prince* & Willson's *The Music Man*

Prince Karl Franz (Rendall) is tutored by Dr. Engel (Bailey) while living incognito in Heidelberg but falls in love with Kathie the waitress (Hill Smith). Professor Harold Hill (Noble) falls in love with Marian the librarian (Brett) while creating the River City Boys' Band.

### April 29 Mozart's *Così fan Tutte*

Ferrando (Araiza) and Guglielmo (Allen) are engaged to Fiordiligi (Mattila) and Dorabella (Von Otter), but Don Alfonso (Van Dam) wagers that the women won't remain faithful while they're away at war.

### May 6 Smetana's *Die verkaufte Braut* (*The Bartered Bride*)

Kruschina (Cordes) and Kathinka (Puttar) scheme with marriage broker Kezal (Frick) to marry off their daughter Marie (Lorengar) to the son of their landlord, but she's in love with Hans (Wunderlich).

### May 13 Sullivan's *HMS Pinafore & Iolanthe*

Josephine (Hindmarsh), the daughter of Captain Corcoran (Skitch), is in love with sailor Ralph Rackstraw (Round), but her father wants her to marry the First Lord of the Admiralty (Reed). Iolanthe (Newman), a ward of the court, wants to marry Strephon (Styler), but the Lord Chancellor (Reed) wants to marry her himself.

### May 20 Weber's *Euryanthe*

Lysiart (Krause), secretly in love with Euryanthe (Norman), makes a bet with her husband Adolar (Gedda) that she's unfaithful, which he "proves" with a poisoned ring. (From the Ruocchio Archives.)

### May 27 Massenet's *Werther*

A sensitive young poet (Hadley) can't cope with rejection by woman who's already engaged (Von Otter), in an adaptation of Goethe's novel.

### March 7

Bach: Cantata BWV 54  
Handel: *Israel in Egypt*

### March 14

Bach: Cantata BWV 227  
Danielpour: *The Passion of Yeshua*

### March 21

Spring Membership Drive

### March 28

Spring Membership Drive

### April 4

Bach: Cantata BWV 31  
Berlioz: *Te Deum*

### April 11

Bach: Cantata BWV 67  
Bruckner: *Te Deum*

### April 18

Bach: Cantata BWV 104  
Sheehan: *Liturgy of St. John Chrysostom*

### April 25

Bach: Cantata BWV 103  
Handel: *Joshua*

### May 2

Bach: Cantata BWV 108  
Rheinberger: *Requiem* no. 2 in E-flat



## Great Sacred Music

Sundays at 8:00 a.m. (eastern)  
With host Rob Kennedy

### May 9

Bach: Cantata BWV 86  
Puccini: *Messa di Gloria*

### May 16

Bach: Cantata BWV 183  
Jenkins: *Te Deum*

### May 23

Bach: Cantata BWV 59  
Charpentier: *Te Deum*

### May 30

Bach: Cantata BWV 165  
Scarlatti: *Il Martirio di Santa Teodosia*

Great Sacred Music is made possible by our listeners and the following people and organizations:

**All Saints Anglican Church**  
Raleigh, NC

**Dr. Jerry Grise**  
Cary, NC

**Blaine Hall Paxton**  
Farrington Village, NC

**The Chapel of the Cross**  
Chapel Hill, NC

**Blaine Paxton Hall**  
Farrington Village, NC

**William Marley**  
Raleigh, NC

**Dr. & Mrs. Harold Chapman**  
Macon, GA

**Rev. David Livingstone James**  
Cary, NC

**Dr. Thomas Nutt-Powell**  
Boston, MA

**David Crabtree**  
Raleigh, NC

**Carole Keeler**  
Greensboro, NC

**William Raper**  
Raleigh, NC

**Ethel Girvin**  
Timberlake, NC

**Kirk of Kildare**  
Cary, NC

**Claude and Sarah Snow**  
Chapel Hill, NC

**Dr. Alfred Goshaw**  
Chapel Hill, NC

**James H. Lazenby**  
Farrington Village, NC

**University Presbyterian Church**  
Chapel Hill, NC

If you or your organization would like to be a patron of Great Sacred Music, contact Rob Kennedy via e-mail or phone at 919-740-5180.

# Preview!

Sundays at 6:00 p.m. (eastern)  
With host David Jeffrey Smith

By Rob Kennedy

Every Sunday, The Classical Station presents Preview, a program featuring new classical recording releases. From symphonies to vocal music, from ballet to chamber music, we sample new interpretations of familiar music, as well as newer music. A regular feature of Preview is an interview at approximately 7:00 p.m. We speak with performing musicians and composers from around the world. If you miss the interview on a Sunday evening, you will find our interviews on the Preview page on our website at [TheClassicalStation.org](http://TheClassicalStation.org) under the Programs menu.

This winter, our guests will include pianist Angela Hewitt, music critic Anthony Tommasini, and composer Richard Danielpour.



Angela Hewitt, pianist

photo: Angela Hewitt



Anthony Tommasini, music critic

photo: Tony Cencicola



Richard Danielpour, composer

photo: Timothy Greenfield Sanders

Where can you hear specialty programming like Opera House, Great Sacred Music, and Renaissance Fare? Great Classical Music presented by knowledgeable announcers... here at The Classical Station.



# wavelengths

Sundays at 9:00 p.m. (eastern)  
With host Ed Amend

Gabriela Lena Frank, born in Berkeley, California, in 1972, is an American composer of Peruvian, Chinese, and Lithuanian Jewish ancestry. Her music is informed by her multicultural background, in particular her Latin American roots. Her compositions have included commissions from the Kronos Quartet, Chanticleer, and the Silkroad Ensemble, of which she is a member. She is also composer-in-residence for the Philadelphia Orchestra, a multiple Grammy nominee, and winner of a Latin Grammy.

Join The Classical Station on Sunday, March 7, as we celebrate the music of Gabriela Lena Frank on Wavelengths. It's part of our larger feature of modern female composers during Women's History Month.

Wavelengths brings you the best in contemporary classical music, featuring works from the mid-20th century through today.



Gabriela Lena Frank

photo: Mariah Tauger

# peaceful reflections

Sundays at 10:00 p.m. (eastern)  
With host Ed Amend

Following Wavelengths, WCPE brings you two hours of music intended to help you unwind from the week that's ending and prepare for the one ahead. Peaceful Reflections is a thoughtful, relaxing mix of orchestral, chamber, choral, and organ works, a perfect way to end a Sunday evening.





# program listings (march)

## March Featured Works

All programming is subject to change. For a complete list of a specific day's music, go to [TheClassicalStation.org](http://TheClassicalStation.org).

### 1 Monday

9:00 a.m.	Chopin: Piano Concerto no. 1 in E Minor
10:00 a.m.	Farrenc: Symphony no. 1 in C Minor
12:00 p.m.	Ponchielli: <i>Dance of the Hours</i>
2:00 p.m.	Chopin: Piano Sonata no. 3 in B Minor
3:00 p.m.	Respighi: Suite no. 3 from <i>Ancient Airs and Dances</i>
4:00 p.m.	Chopin: Barcarolle in F-sharp
6:00 p.m.	Handel: "Angels, Ever Bright and Fair" from <i>Theodora</i>
7:00 p.m.	My Life in Music
8:00 p.m.	Chopin: Piano Concerto no. 2 in F Minor
9:00 p.m.	Beethoven: Symphony no. 4 in B-flat
10:00 p.m.	Lieberson: "If Your Eyes Were Not the Color of the Moon" from <i>Neruda Songs</i>

### 2 Tuesday

9:00 a.m.	Chaminade: "Fairy Tales"
10:00 a.m.	Brahms: <i>Variations on a Theme by Haydn</i>
11:00 a.m.	Smetana: String Quartet no. 1 in E Minor ( <i>From My Life</i> )
12:00 p.m.	Schubert: Impromptu in G-flat, D. 899, no. 3
2:00 p.m.	C. Romero: <i>Concierto de Málaga</i>
3:00 p.m.	Smetana: <i>The Moldau</i>
7:00 p.m.	Copland: <i>El Salón México</i>
8:00 p.m.	Smetana: Overture and Dances from <i>Bartered Bride</i>
9:00 p.m.	Mozart: Piano Concerto no. 23 in A

### 3 Wednesday

8:00 a.m.	Mendelssohn-Hensel: "March" from <i>The Year</i>
9:00 a.m.	Debussy: <i>Prelude to the Afternoon of a Faun</i>
10:00 a.m.	Tchaikovsky: <i>Capriccio Italien</i>
12:00 p.m.	Paradis: "Sicilienne"
2:00 p.m.	Beethoven: Piano Concerto no. 4 in G
3:00 p.m.	Smyth: Serenade in D
7:00 p.m.	C. Schumann: Piano Trio in G Minor

8:00 p.m.	Tchaikovsky: Serenade for Strings in C
9:00 p.m.	Brahms: Symphony no. 4 in E Minor

### 4 Thursday

9:00 a.m.	Vivaldi: <i>Four Seasons</i>
10:00 a.m.	Bizet: Symphony in C
12:00 p.m.	Vivaldi: Lute Concerto in D
1:00 p.m.	Haydn: Symphony no. 94 in G ( <i>Surprise</i> )
2:00 p.m.	Mendelssohn: Symphony no. 5 ( <i>Reformation</i> )
3:00 p.m.	Price: Violin Concerto no. 2
5:00 p.m.	Higdon: "Amazing Grace"
7:00 p.m.	Thursday Night Opera House
10:00 p.m.	Beach: "From Grandmother's Garden"

### 5 Friday

8:00 a.m.	Mozart: Horn Concerto no. 1 in D
9:00 a.m.	All-Request Friday
10:00 p.m.	Villa-Lobos: Five Preludes for Guitar

### 6 Saturday

8:00 a.m.	Strauss II: <i>Artists' Life</i>
9:00 a.m.	Farrenc: Piano Trio no. 1 in E-flat
10:00 a.m.	Mozart: Clarinet Concerto in A
11:00 a.m.	Rodrigo: <i>Fantasia for a Gentleman</i>
12:00 p.m.	Harbach: <i>Jubilee Symphony</i>
1:00 p.m.	Metropolitan Opera
4:00 p.m.	Rachmaninoff: Piano Concerto no. 3 in D Minor
5:00 p.m.	Wagner: Overture to <i>Tannhäuser</i>

### 7 Sunday

7:00 a.m.	Ravel: Two Hebraic Songs
9:00 a.m.	Bach: Cantata 54 ( <i>Widerstehe doch der Sünde</i> )
9:30 a.m.	Handel: <i>Israel in Egypt</i>
12:00 p.m.	Ravel: <i>Le Tombeau de Couperin</i>
1:00 p.m.	Beach: Piano Trio in A Minor
2:00 p.m.	Mozart: Symphony no. 38 in D ( <i>Prague</i> )
3:00 p.m.	Ravel: <i>Noble and Sentimental Waltzes</i>
4:00 p.m.	Saint-Saëns: "Mon Coeur s'Ouvre à ta Voix" from <i>Samson and Delilah</i>
5:00 p.m.	My Life in Music

### 8 Monday

9:00 a.m.	C.P.E. Bach: Berlin Symphony in G
10:00 a.m.	Farrenc: Piano Quintet no. 1 in A Minor
12:00 p.m.	Vivaldi: Concerto in G Minor

2:00 p.m.	C.P.E. Bach: Cello Concerto in B-flat
3:00 p.m.	Rodrigo: <i>Concierto de Aranjuez</i>
5:00 p.m.	Hovhanness: "Prayer of St. Gregory" for Trumpet and Strings
7:00 p.m.	Renaissance Fare
8:00 p.m.	Fauré: <i>Dolly Suite</i>
9:00 p.m.	Nielsen: Symphony no. 3 ( <i>Sinfonia Espansiva</i> )
10:00 p.m.	Lili Boulanger: Nocturne for Violin and Piano

### 9 Tuesday

9:00 a.m.	Barber: "Adagio for Strings"
10:00 a.m.	Wagner: <i>Siegfried Idyll</i>
12:00 p.m.	Barber: Overture to <i>The School for Scandal</i>
2:00 p.m.	Telemann: Overture in B-flat
3:00 p.m.	C. Schumann: Piano Concerto in A Minor
7:00 p.m.	Price: Symphony no. 1 in E Minor
8:00 p.m.	Barber: Violin Concerto
9:00 p.m.	Dvořák: Serenade in E for Strings

### 10 Wednesday

9:00 a.m.	Saint-Saëns: <i>Carnival of the Animals</i>
10:00 a.m.	Farrenc: Piano Quintet no. 2 in E
12:00 p.m.	Alfvén: <i>Swedish Rhapsody</i> no. 1 ( <i>Midsummer Vigil</i> )
2:00 p.m.	Sarasate: <i>Carmen Fantasy</i>
3:00 p.m.	Chopin: Ballade no. 1 in G Minor
7:00 p.m.	Mendelssohn-Hensel: Capriccio in A-flat
8:00 p.m.	Elgar: <i>Severn Suite</i>
9:00 p.m.	Brahms: Violin Concerto in D

### 11 Thursday

9:00 a.m.	Bach: Orchestral Suite no. 3 in D
10:00 a.m.	Beethoven: Piano Concerto no. 1 in C
12:00 p.m.	Price: "Dances in the Canebrakes"
1:00 p.m.	Mozart: Horn Concerto no. 3 in E-flat
2:00 p.m.	Mendelssohn: Symphony no. 3 in A Minor ( <i>Scottish</i> )
3:00 p.m.	Delius: <i>In a Summer Garden</i> , a Rhapsody
5:00 p.m.	Debussy: "Clair de Lune" from <i>Suite Bergamasque</i>
7:00 p.m.	Thursday Night Opera House
10:00 p.m.	Farrenc: Clarinet Trio in E-flat

### 12 Friday

8:00 a.m.	Arne: Symphony no. 2 in F
9:00 a.m.	All-Request Friday
10:00 p.m.	Hildegard von Bingen: "O Ecclesia"

### 13 Saturday

7:00 a.m.	Zimmer: "This Land" from <i>The Lion King</i>
8:00 a.m.	Goldsmith: <i>Motion Pictures Medley</i>
9:00 a.m.	Williams: Theme from <i>The Patriot</i>
10:00 a.m.	Gershwin: <i>An American in Paris</i>
11:00 a.m.	Bach: Italian Concerto in F
12:00 p.m.	Williams: "Scherzo for X-Wings" from <i>Star Wars, the Force Awakens</i>
1:00 p.m.	Metropolitan Opera
5:00 p.m.	E. Bernstein: Suite from <i>To Kill a Mockingbird</i>

### 14 Sunday

7:00 a.m.	Telemann: Paris Quartet no. 1 in G
9:00 a.m.	Bach: Motet no. 3 ( <i>Jesu, Meine Freude</i> ) BWV 227
10:00 a.m.	Danielpour: <i>The Passion of Yeshua</i>
12:00 p.m.	John Powell: Selections from <i>How to Train Your Dragon</i>
1:00 p.m.	Herrmann: Suite from <i>Citizen Kane</i>
2:00 p.m.	Williams: Three Pieces from <i>Schindler's List</i>
3:00 p.m.	Dukas: <i>Sorcerer's Apprentice</i>
4:00 p.m.	Rodgers: Five Selections from <i>Victory at Sea</i>
5:00 p.m.	Renaissance Fare



Adolphus Hailstork  
b. 1941 (80th birthday)

## Spring Membership Drive 2021

WCPE is pleased to offer the following selection of thank-you gifts when you make a donation to support Great Classical Music. All members also receive a subscription of *Quarter Notes*. Learn more about the benefits of membership at [TheClassicalStation.org](http://TheClassicalStation.org).

### For a \$60 donation (or \$5/mo. sustainer)

- Car magnet (*new design!*)
- Blue pen
- Stainless steel bottle opener



### For a \$100 donation

- Stainless/enamel 16-oz. mug (*new!*)
- Stainless steel straw set



### For a \$120 donation (or \$10/mo. sustainer)

- Maroon baseball cap
- WCPE T-shirt, sand/maroon logo (*new!*)
- Auto safety 5-in. flashlight
- Choose one of the following CDs:
  - CD #1. *Alison Balsom: Magic Trumpet*
  - CD #2. *Beethoven: Symphony no. 7, Piano Concerto no. 4*
  - CD #3. *Jake Runestad: Sing Wearing the Sky*
  - CD #4. *Jonas Kaufmann: Wien*

### For a \$150 donation (or \$12.50/mo. sustainer)

- Bib apron, royal/white logo (*new!*)
- CD #5. *Songs of Comfort and Hope*
- CD #6. *Orchestral Favorites*

### For a \$180 donation (or \$15/mo. sustainer)

- 16-oz. stainless insulated bottle (blue)
- CD #7. *Delibes: Ballet Suites*
- CD #8. *Murray Perahia plays Schubert and Brahms*
- DVD #1. *Verdi, La Traviata*

### For a \$200 donation

- Day dedication, four times on the day you choose

### For a \$240 donation (or \$20/mo. sustainer)

- WCPE charcoal crewneck sweatshirt
- CD #9. *Berlioz: Requiem*

### For a \$300 donation (or \$25/mo. sustainer)

- Sport Challenger umbrella, folds to 18 in. (blue)



### For a \$500 donation

- Monthly on-air acknowledgment

### For a \$1200 donation (or \$100/mo. sustainer)

- Weekly on-air acknowledgment



### CD #1. *Alison Balsom: Magic Trumpet*

British trumpet star Alison Balsom displays her own unique magic with a varied repertoire ranging from Handel and Bach through Piazzolla and Satie.

### CD #2. *Beethoven: Symphony no. 7, Piano Concerto no. 4*

Lahav Shani, the Israeli pianist and chief conductor of the Rotterdam Philharmonic, shines in both roles on this new recording.

### CD #3. *Jake Runestad: Sing Wearing the Sky*

Conductor Joel Rinsema leads the ensemble Kantorei in a program of works by American composer Jake Runestad, an exciting new voice in contemporary choral music.

### CD #4. *Jonas Kaufmann: Wien*

German tenor Kaufmann pays tribute to the birthplace of waltz and operetta with this delightful offering of songs by Lehár, Kalman, Weinberger, and Strauss II. With Ádám Fischer leading the Vienna Philharmonic.

### CD #5. *Songs of Comfort and Hope*

Cellist Yo-Yo Ma and pianist Kathryn Stott, longtime friends and collaborators, present a calming program of classical favorites, folk tunes, and jazz arrangements—their gift of musical comfort in trying times.

### CD #6. *Orchestral Favorites*

Forty of the world's best-loved works of classical music performed by the Royal Philharmonic Orchestra. Works by Mendelssohn, Handel, Verdi, Barber, Mozart, and more (4 discs).

### CD #7. *Delibes: Ballet Suites*

Glorious music from *Coppélia*, *Sylvia*, and *La Source*. Veteran conductor Neeme Järvi leads the Royal Scottish National Orchestra in these beautiful performances.

### CD #8. *Murray Perahia plays Schubert and Brahms*

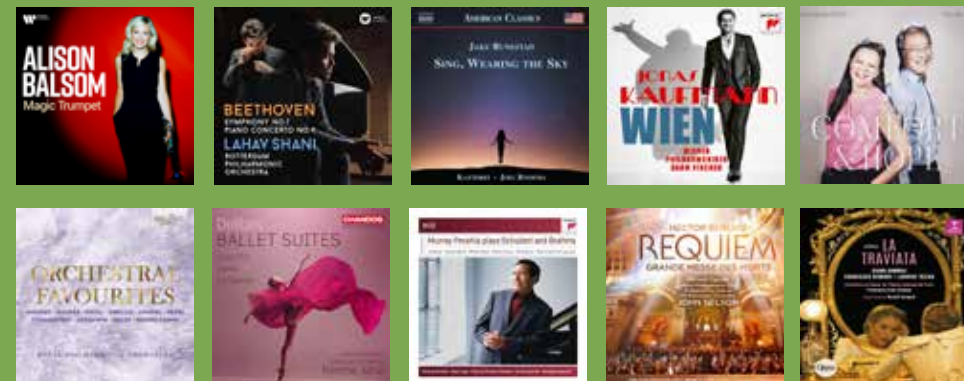
One of the leading pianists of our time in a broad compilation of acclaimed performances. Includes Schubert's complete *Winterreise* with tenor Dietrich Fischer-Dieskau (8 discs).

### CD #9. *Berlioz: Requiem*

A stunning 2019 performance of Berlioz's monumental masterpiece, recorded in St. Paul's Cathedral in London. Conductor John Nelson leads combined choirs and orchestras totaling more than 300 musicians, including tenor Michael Spyres. Includes a CD and DVD of the performance.

### DVD #1. *Verdi, La Traviata*

Diana Damrau is commanding in the role of Violetta, with Francesco Demuro, Ludovic Tézier and the Paris National Opera Chorus and Orchestra. Francesco Ivan Ciampa conducts.



# program listings (march)

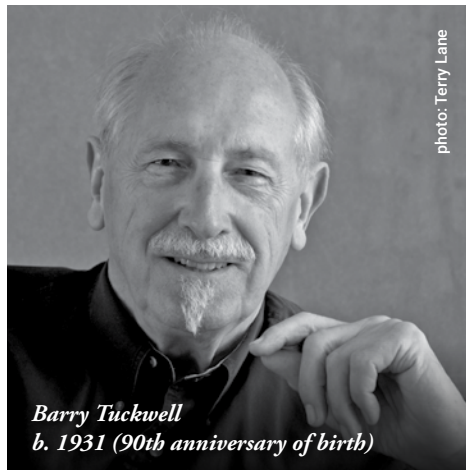


photo: Terry Lane

**Barry Tuckwell**  
b. 1931 (90th anniversary of birth)

## 15 Monday

9:00 a.m.	Beethoven: Symphony no. 2 in D
10:00 a.m.	C. Schumann: <i>Four Fugitive Pieces</i>
12:00 p.m.	Debussy: "En Bateau" from <i>Petite Suite</i>
2:00 p.m.	Tchaikovsky: <i>Melancholy Serenade</i>
3:00 p.m.	Bach: <i>Brandenburg Concerto</i> no. 6 in B-flat
7:00 p.m.	C.P.E. Bach: String Symphony in B Minor
8:00 p.m.	Brahms: Symphony no. 1 in C Minor
9:00 p.m.	Schubert: Symphony no. 8 in B Minor ( <i>Unfinished</i> )
10:00 p.m.	E. Mayer: Piano Trio in B Minor

## 16 Tuesday

9:00 a.m.	Mendelssohn: Symphony no. 4 in A ( <i>Italian</i> )
10:00 a.m.	Prokofiev: Symphony no. 1 in D ( <i>Classical</i> )
12:00 p.m.	Chaminade: "Fairy Tales"
2:00 p.m.	Berlioz: <i>Symphonie Fantastique</i>
3:00 p.m.	Mendelssohn: Piano Concerto no. 1 in G Minor
6:00 p.m.	Rossini: "Una Voce Poco Fa" from <i>Il Barbiere di Siviglia</i>
7:00 p.m.	Mendelssohn-Hensel: Piano Trio in D Minor
8:00 p.m.	Liszt: <i>Les Préludes</i>
9:00 p.m.	Beethoven: Symphony no. 3 in E-flat ( <i>Eroica</i> )

## 17 Wednesday

8:00 a.m.	Arnold: <i>Four Irish Dances</i>
9:00 a.m.	Beethoven: Piano Concerto no. 5 in E-flat ( <i>Emperor</i> )

10:00 a.m.	Stanford: <i>Irish Rhapsody</i> no. 1
12:00 p.m.	Balfe: "I Dreamed I Slept in Marble Halls" from <i>The Bohemian Girl</i>
2:00 p.m.	Field: Piano Sonata in A
3:00 p.m.	Stanford: Symphony no. 3 in F Minor ( <i>Irish</i> )
4:00 p.m.	Black: "Reeling" from <i>Laments and Dances from the Irish</i>
6:00 p.m.	Traditional: "Irish Tune from County Derry"
7:00 p.m.	Duff: <i>Echoes of Georgian Dublin</i>
8:00 p.m.	Harty: "In Ireland"
9:00 p.m.	Sullivan: Symphony in E ( <i>Irish</i> )

## 18 Thursday

8:00 a.m.	Rimsky-Korsakov: "Procession of the Nobles" from <i>Mlada</i>
9:00 a.m.	Price: <i>Concerto in One Movement</i>
10:00 a.m.	Bruch: Concerto in E Minor for Clarinet and Viola
12:00 p.m.	Lili Boulanger: Prelude in D-flat
1:00 p.m.	Liszt: "St. Francis of Paola Walking on the Water"
2:00 p.m.	Rimsky-Korsakov: <i>Scheherazade</i>
3:00 p.m.	Mozart: Symphony no. 39 in E-flat
7:00 p.m.	Thursday Night Opera House
10:00 p.m.	I.B. Smith: Sonata for Violin and Piano

## March 19-28

Spring 2021 Membership Drive  
Call 800-556-5178

WCPE is listener-supported classical radio. Please do your part to help continue this vital service.

## 29 Monday

8:00 a.m.	Ravel: "The Fairy Garden" from <i>Mother Goose Suite</i>
9:00 a.m.	Bach: <i>Brandenburg Concerto</i> no. 3 in G
10:00 a.m.	Walton: "Orb and Sceptre"
12:00 p.m.	Beach: "From Blackbird Hills"
2:00 p.m.	Walton: Suite from <i>Henry V</i>
3:00 p.m.	Schumann: Symphony no. 4 in D Minor
6:00 p.m.	Bach: Fugue in G Minor ("Little Fugue")
7:00 p.m.	Chaminade: "Spanish Serenade"
8:00 p.m.	Beethoven: Piano Concerto no. 5 in E-flat ( <i>Emperor</i> )
9:00 p.m.	Walton: Five Bagatelles for Guitar and Orchestra

# program listings (march/april)

10:00 p.m. Farrenc: *Nonetto* in E-flat

## 30 Tuesday

9:00 a.m.	Liszt: <i>Hungarian Rhapsody</i> no. 2
10:00 a.m.	Handel: <i>Water Music</i>
12:00 p.m.	Beethoven: Piano Sonata no. 14 in C-sharp Minor ( <i>Moonlight</i> )
2:00 p.m.	Grieg: <i>Holberg Suite</i>
3:00 p.m.	Medtner: Piano Concerto no. 2 in C Minor
7:00 p.m.	Suppé: "Light Cavalry" Overture
8:00 p.m.	Dvořák: Symphony no. 7 in D Minor
9:00 p.m.	Schumann: Symphony no. 3 in E-flat ( <i>Rhenish</i> )
10:00 p.m.	Beach: Piano Quintet in F-sharp Minor

## 31 Wednesday

9:00 a.m.	Haydn: Symphony no. 101 in D ( <i>Clock</i> )
10:00 a.m.	Tchaikovsky: Violin Concerto in D
12:00 p.m.	Haydn: Trumpet Concerto in E-flat
2:00 p.m.	Debussy: <i>Children's Corner</i>
3:00 p.m.	Haydn: Cello Concerto no. 2 in D
7:00 p.m.	Tower: <i>Made in America</i>
8:00 p.m.	Haydn: Symphony no. 104 in D ( <i>London</i> )
9:00 p.m.	Brahms: Serenade no. 1 in D
10:00 p.m.	Haydn: String Quartet in C ( <i>Emperor</i> )

## April Featured Works

All programming is subject to change. For a complete list of a specific day's music, go to [TheClassicalStation.org](http://TheClassicalStation.org).

## 1 Thursday

8:00 a.m.	Strauss II: "Joke" Polka
9:00 a.m.	Rachmaninoff: Piano Concerto no. 2 in C Minor
10:00 a.m.	Schumann: <i>Carnival Jest</i> from <i>Vienna</i>
12:00 p.m.	Rachmaninoff: <i>Rhapsody on a Theme of Paganini</i>
2:00 p.m.	Mozart: Serenade no. 13 in G ( <i>Eine Kleine Nachtmusik</i> )
3:00 p.m.	Rachmaninoff: <i>Symphonic Dances</i>
5:00 p.m.	P.D.Q. Bach: <i>1712 Overture</i>
6:00 p.m.	Rachmaninoff: Prelude in C-sharp Minor
7:00 p.m.	Thursday Night Opera House
10:00 p.m.	Busoni: Violin Sonata no. 2 in A Minor

## 2 Friday

8:00 a.m.	Wagner: <i>Good Friday Music</i> from <i>Parsifal</i>
9:00 a.m.	All-Request Friday
10:00 p.m.	Beethoven: Romance no. 2 in F for Violin

## 3 Saturday

8:00 a.m.	Beethoven: Piano Sonata no. 21 in C ( <i>Waldstein</i> )
9:00 a.m.	Mendelssohn: Violin Concerto in E Minor
10:00 a.m.	Telemann: <i>Burleske Suite</i>
11:00 a.m.	Chopin: Piano Concerto no. 2 in F Minor
12:00 p.m.	Dvořák: <i>Scherzo Capriccioso</i>
1:00 p.m.	Metropolitan Opera
5:00 p.m.	Castelnuovo-Tedesco: Guitar Quintet

## 4 Sunday

7:00 a.m.	Vaughan Williams: "Easter Hymn"
9:00 a.m.	Bach: Cantata 31 ( <i>Der Himmel Lacht! Die Erde Jubiliert!</i> )
10:00 a.m.	Berlioz: <i>Te Deum</i>
12:00 p.m.	Rimsky-Korsakov: <i>Russian Easter Overture</i>
1:00 p.m.	Mendelssohn: <i>Hebrides Overture</i>
2:00 p.m.	Mozart: Piano Concerto no. 21 in C
3:00 p.m.	Bach: <i>Orchestral Suite</i> no. 2 in B Minor
4:00 p.m.	Walton: Viola Concerto
5:00 p.m.	Vaughan Williams: <i>The Lark Ascending</i>

## 5 Monday

9:00 a.m.	Spohr: <i>Potpourri</i> for Clarinet and Orchestra
10:00 a.m.	Tchaikovsky: Symphony no. 1 in G Minor ( <i>Winter Dreams</i> )
12:00 p.m.	Ravel: "Pavane for a Dead Princess"
2:00 p.m.	Delius: <i>Florida Suite</i>
3:00 p.m.	Beethoven: Symphony no. 7 in A
7:00 p.m.	My Life in Music
8:00 p.m.	Brahms: Piano Concerto no. 2 in B-flat
9:00 p.m.	Mozart: Symphony no. 29 in A
10:00 p.m.	Sibelius: Symphony no. 4 in A Minor

## 6 Tuesday

9:00 a.m.	Schumann: Piano Quartet in E-flat
10:00 a.m.	Ravel: <i>Sonatine</i>
12:00 p.m.	Lili Boulanger: Nocturne

# program listings (april)

2:00 p.m.	Beethoven: Symphony no. 8 in F
3:00 p.m.	Bach: <i>Brandenburg Concerto</i> no. 4 in G
7:00 p.m.	Mozart: Horn Concerto no. 2 in E-flat
8:00 p.m.	Mussorgsky: <i>Pictures at an Exhibition</i>
9:00 p.m.	Saint-Saëns: Piano Concerto no. 2 in G Minor

## 7 Wednesday

9:00 a.m.	Chopin: Ballade no. 4 in F Minor
10:00 a.m.	Mozart: Piano Concerto no. 23 in A
12:00 p.m.	Holst: <i>St. Paul's Suite</i>
2:00 p.m.	Handel: Concerto Grosso in B-flat
3:00 p.m.	Beethoven: Piano Concerto no. 3 in C Minor
7:00 p.m.	Bach: Orchestral Suite no. 1 in C
8:00 p.m.	Dvořák: Symphony no. 5 in F
9:00 p.m.	Rachmaninoff: Piano Concerto no. 3 in D Minor

## 8 Thursday

9:00 a.m.	Tartini: Violin Concerto in A Minor
10:00 a.m.	Beethoven: Violin Concerto in D
12:00 p.m.	R. Strauss: Waltzes from <i>Der Rosenkavalier</i>
1:00 p.m.	Bach: Violin Concerto no. 2 in E
2:00 p.m.	Weber: Clarinet Concerto no. 1 in F Minor
3:00 p.m.	Brahms: Serenade no. 2 in A
6:00 p.m.	Tartini: Sonata in G Minor ( <i>The Devil's Trill</i> )
7:00 p.m.	Thursday Night Opera House
10:00 p.m.	Milano: Three Fantasias for Lute

## 9 Friday

8:00 a.m.	Dvořák: Polonaise in E-flat
9:00 a.m.	All-Request Friday
10:00 p.m.	Grieg: "Cradle Song" from <i>Lyric Pieces</i>

## 10 Saturday

8:00 a.m.	Glinka: "Jota Aragonaise"
9:00 a.m.	Falla: <i>Nights in the Gardens of Spain</i>
10:00 a.m.	Schubert: Piano Quintet in A ( <i>Trout</i> )
11:00 a.m.	Rodrigo: <i>Concierto de Aranjuez</i>

12:00 p.m.	Turina: <i>Danzas Fantasticas</i>
1:00 p.m.	Metropolitan Opera
4:00 p.m.	Albéniz: <i>Suite Española</i>
5:00 p.m.	Falla: <i>Homenajes</i>

## 11 Sunday

7:00 a.m.	Casals: "Salve Regina"
9:00 a.m.	Bach: Cantata 67 ( <i>Halt im Gedächtnis Jesum Christ</i> )
10:00 a.m.	Bruckner: <i>Te Deum</i>
12:00 p.m.	Albéniz: "Fête-Dieu à Seville"
1:00 p.m.	Falla: <i>Suite Populaire Espagnole</i>
2:00 p.m.	Breton: <i>Salamanca</i>
3:00 p.m.	Granados: <i>Poetic Waltzes</i>
4:00 p.m.	Ginastera: "Dance of the Delightful Young Girl"
5:00 p.m.	My Life in Music

## 12 Monday

9:00 a.m.	Telemann: Concerto in F for Three Violins from <i>Tafelmusik</i>
10:00 a.m.	Dvořák: <i>American Suite</i>
12:00 p.m.	Chaminade: "Valse-Caprice"
2:00 p.m.	Handel: Harp Concerto in B-flat
3:00 p.m.	Rimsky-Korsakov: Suite from <i>The Golden Cockerel</i>
5:30 p.m.	Lanner: "The Romantics"
6:00 p.m.	Puccini: "O Mio Babbino Caro" from <i>Gianni Schicchi</i>
7:00 p.m.	Renaissance Fare
8:00 p.m.	Verdi: Overture to <i>Nabucco</i>
9:00 p.m.	Tchaikovsky: Symphony no. 3 in D ( <i>Polish</i> )
10:00 p.m.	Brahms: Intermezzo in A, op. 118, no. 2

## 13 Tuesday

9:00 a.m.	Bennett: Piano Concerto no. 2 in E-flat
10:00 a.m.	Schubert: Rondo in A
12:00 p.m.	Copland: "Fanfare for the Common Man"
2:00 p.m.	Bach: <i>Brandenburg Concerto</i> no. 2 in F
3:00 p.m.	Haydn: Symphony no. 100 in G ( <i>Military</i> )

7:00 p.m.	Grainger: <i>A Lincolnshire Posy</i>
8:00 p.m.	Tchaikovsky: Suite from <i>Swan Lake</i>
9:00 p.m.	Brahms: <i>Variations on a Theme by Haydn</i>
10:00 p.m.	Vaughan Williams: <i>Fantasia on a Theme of Thomas Tallis</i>

## 14 Wednesday

8:00 a.m.	Chopin: Waltz in A-flat, op. 34, no. 1
9:00 a.m.	Tchaikovsky: "Pezzo Capriccioso"
10:00 a.m.	Grieg: <i>Symphonic Dances</i>
12:00 p.m.	Orff: "In Trutina" from <i>Carmina Burana</i>
2:00 p.m.	Haydn: Piano Concerto in D
3:00 p.m.	Dvořák: Cello Concerto in B Minor
7:00 p.m.	Janáček: <i>Pohádka</i>
8:00 p.m.	Tchaikovsky: Symphony no. 4 in F Minor
9:00 p.m.	Elgar: Cello Concerto in E Minor

## 15 Thursday

9:00 a.m.	Mozart: Symphony no. 35 in D ( <i>Haffner</i> )
10:00 a.m.	Schubert: Sonata in A Minor ( <i>Arpeggione</i> )
12:00 p.m.	Respighi: <i>The Birds</i>
1:00 p.m.	Dvořák: <i>Slavonic Dances</i> , op. 72
2:00 p.m.	Fauré: Suite from <i>Pelléas et Mélisande</i>
3:00 p.m.	Beethoven: Clarinet Trio in B-flat
5:00 p.m.	Rossini: Overture to <i>Semiramide</i>
7:00 p.m.	Thursday Night Opera House
10:00 p.m.	Borodin: Nocturne from String Quartet no. 2 in D

## 16 Friday

8:00 a.m.	J.C.F. Bach: Sinfonia in B-flat
9:00 a.m.	All-Request Friday
10:00 p.m.	Mompou: <i>Suite Compostelana</i>

## 17 Saturday

8:00 a.m.	Beethoven: "Andante Favori" in F
9:00 a.m.	Hailstork: Two Romances for Viola and Chamber Ensemble
10:00 a.m.	Mendelssohn: Piano Concerto no. 2 in D Minor
11:00 a.m.	Schubert: String Trio in B-flat
12:00 p.m.	Hailstork: <i>Three Spirituals</i>
1:00 p.m.	Metropolitan Opera
3:00 p.m.	Addinsell: "Warsaw Concerto"

# program listings (april)



Jukka-Pekka Saraste  
b. 1956 (65th birthday)

4:00 p.m.	Mendelssohn: Piano Trio no. 1 in D Minor
5:00 p.m.	Hailstork: Symphony no. 1

## 18 Sunday

7:00 a.m.	Schumann: Canon in B Minor
9:00 a.m.	Bach: Cantata 104 ( <i>Du Hirte Israel, Höre</i> )
10:00 a.m.	Sheehan: <i>Liturgy of St. John Chrysostom</i>
12:00 p.m.	Suppé: Overture to <i>Poet and Peasant</i>
1:00 p.m.	Bach: Passacaglia and Fugue in C Minor
2:00 p.m.	Kabalevsky: <i>The Comedians</i> , Suite for Orchestra
3:00 p.m.	Mozart: Symphony no. 25 in G Minor
4:00 p.m.	Berlioz: <i>Symphonie Fantastique</i>
5:00 p.m.	Renaissance Fare

## 19 Monday

9:00 a.m.	Chopin: <i>Études</i> , op. 25
10:00 a.m.	Fauré: <i>Dolly Suite</i>
12:00 p.m.	Purcell: Suite from <i>Abdelazar</i>
2:00 p.m.	Mozart: Piano Concerto no. 27 in B-flat
3:00 p.m.	R. Strauss: <i>Till Eulenspiegel's Merry Pranks</i>
7:00 p.m.	Beethoven: Piano Sonata no. 3 in C
8:00 p.m.	Mozart: Symphony no. 39 in E-flat
9:00 p.m.	Brahms: Double Concerto for Violin and Cello in A Minor

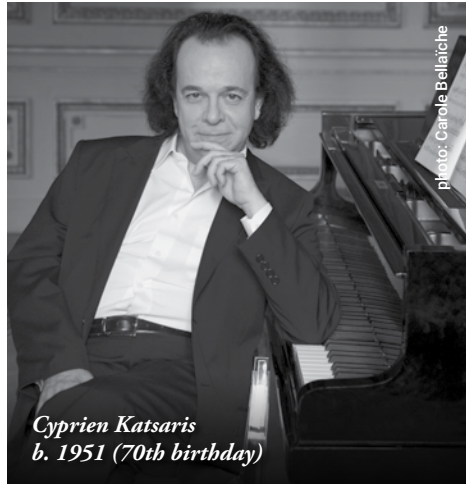
## 20 Tuesday

9:00 a.m.	Beethoven: Symphony no. 6 in F ( <i>Pastoral</i> )
10:00 a.m.	Borodin: <i>Polovtsian Dances</i> from <i>Prince Igor</i>
12:00 p.m.	Schumann: Overture to <i>Genoveva</i>



Listen to Great Classical Music 24-7 by streaming at [TheClassicalStation.org](http://TheClassicalStation.org)!

# program listings (april)



- 2:00 p.m. Schubert: Sonatina in D
- 3:00 p.m. Schumann: Symphony no. 2 in C
- 7:00 p.m. Tchaikovsky: *Romeo and Juliet Fantasy Overture*
- 8:00 p.m. Elgar: *Enigma Variations*
- 9:00 p.m. Respighi: *The Fountains of Rome*

## 21 Wednesday

- 9:00 a.m. Vivaldi: Concerto in G Minor for Violin and Oboe
- 10:00 a.m. Weber: Clarinet Concerto no. 2 in E-flat
- 12:00 p.m. Thompson: "Alleluia"
- 2:00 p.m. Bach: Concerto in D Minor for Two Violins
- 3:00 p.m. Grieg: Piano Concerto in A Minor
- 7:00 p.m. Hummel: Trumpet Concerto
- 8:00 p.m. Schumann: Concert Piece in F for Four Horns and Orchestra
- 9:00 p.m. Beethoven: Violin Sonata no. 9 in A (*Kreutzer*)
- 10:00 p.m. Thompson: "Stopping by Woods on a Snowy Evening" from *Frostiana*

## 22 Thursday

- 8:00 a.m. Dvořák: *In Nature's Realm*
- 9:00 a.m. Bruch: Violin Concerto no. 1 in G Minor
- 10:00 a.m. Sibelius: *Karelia Suite*
- 12:00 p.m. Amram: *Theme and Variations on Red River Valley*
- 1:00 p.m. Debussy: *Prelude to the Afternoon of a Faun*
- 2:00 p.m. Prokofiev: *Peter and the Wolf*
- 3:00 p.m. Smyth: Overture to *The Wreckers*

- 5:30 p.m. Josef Strauss: "Music of the Spheres"
- 7:00 p.m. Thursday Night Opera House
- 10:00 p.m. Traditional: "The Earth Adorned"

## 23 Friday

- 8:00 a.m. Saint-Saëns: "Bacchanale" from *Samson and Delilah*
- 9:00 a.m. All-Request Friday
- 10:00 p.m. Leoncavallo: Intermezzo from *Pagliacci*

## 24 Saturday

- 7:00 a.m. Buxtehude: Trio Sonata no. 4 in B-flat
- 8:00 a.m. Bach: *Brandenburg Concerto no. 6 in B-flat*
- 9:00 a.m. Vivaldi: *Four Seasons*
- 10:00 a.m. Handel: *Music for the Royal Fireworks*
- 11:00 a.m. Telemann: Trumpet Concerto no. 1 in D
- 12:00 p.m. Bach: Chaconne from Violin Partita in D Minor
- 1:00 p.m. Metropolitan Opera

## 25 Sunday

- 7:00 a.m. Purcell: "Praise the Lord, O Jerusalem"
- 9:00 a.m. Bach: Cantata 103 (*Ihr Werdet Weinen und Heulen*)
- 10:00 a.m. Handel: *Joshua*
- 12:00 p.m. Couperin: *Pièces en Concert*
- 1:00 p.m. Bach: Violin Concerto no. 1 in A Minor
- 2:00 p.m. Handel: Suite in F from *Water Music*
- 3:00 p.m. Albinoni: Oboe Concerto in D Minor
- 4:00 p.m. Telemann: Overture in D from *Tafelmusik*
- 5:00 p.m. Bach: Prelude and Fugue in G

## 26 Monday

- 9:00 a.m. Mozart: Piano Sonata no. 11 in A
- 10:00 a.m. Copland: *Four Dance Episodes from Rodeo*
- 12:00 p.m. Ravel: *La Valse*
- 2:00 p.m. Nielsen: Symphony no. 1 in G Minor
- 3:00 p.m. Beethoven: Piano Trio in D (*Ghost*)
- 5:00 p.m. Chopin: *Polonaise Fantasy* in A-flat
- 7:00 p.m. Elgar: *The Wand of Youth Suite* no. 1
- 8:00 p.m. Beethoven: Symphony no. 2 in D
- 9:00 p.m. Rachmaninoff: *Symphonic Dances*

## 27 Tuesday

- 8:00 a.m. Flotow: Overture to *Martha*

# program listings (april/may)

- 9:00 a.m. Prokofiev: *Lieutenant Kijé Suite*
- 10:00 a.m. W.F. Bach: Overture in G Minor
- 12:00 p.m. Mozart: Violin Sonata in C
- 2:00 p.m. Prokofiev: Symphony no. 1 in D (*Classical*)
- 3:00 p.m. Beethoven: Piano Sonata no. 8 in C Minor (*Pathétique*)
- 7:00 p.m. Sibelius: "Finlandia"
- 8:00 p.m. Prokofiev: Piano Concerto no. 3 in C
- 9:00 p.m. Mendelssohn: Incidental Music from *A Midsummer Night's Dream*

## 28 Wednesday

- 9:00 a.m. Berlioz: *Harold in Italy*
- 10:00 a.m. Haydn: Symphony no. 45 in F-sharp Minor (*Farewell*)
- 12:00 p.m. Saint-Saëns: "Havanaise"
- 2:00 p.m. Bizet: *Children's Games*
- 3:00 p.m. Mendelssohn: Octet in E-flat
- 7:00 p.m. Berlioz: "Reverie and Caprice"
- 8:00 p.m. Mozart: Symphony no. 40 in G Minor
- 9:00 p.m. Tchaikovsky: Symphony no. 6 in B Minor (*Pathétique*)

## 29 Thursday

- 8:00 a.m. Handel: "Arrival of the Queen of Sheba" from *Solomon*
- 9:00 a.m. Brahms: Symphony no. 2 in D
- 10:00 a.m. Vieuxtemps: Violin Concerto no. 5 in A Minor
- 12:00 p.m. Sullivan: Overture to *H.M.S. Pinafore*
- 1:00 p.m. Copland: "An Outdoor Overture"
- 2:00 p.m. Holst: *The Planets*
- 3:00 p.m. Schubert: Symphony no. 5 in B-flat
- 5:00 p.m. Strauss II: Overture to *Die Fledermaus*
- 7:00 p.m. Thursday Night Opera House
- 10:00 p.m. Barber: "Adagio for Strings"

## 30 Friday

- 8:00 a.m. Lehár: "Sirens of the Ball Waltz"
- 9:00 a.m. All-Request Friday

- 10:00 p.m. Verdi: "Va, Pensiero" from *Nabucco*

## May Featured Works

All programming is subject to change. For a complete list of a specific day's music, go to [TheClassicalStation.org](http://TheClassicalStation.org).

## 1 Saturday

- 8:00 a.m. Alfvén: "Dance of the Shepherdess" from *The Mountain King*
- 9:00 a.m. Mozart: Flute Concerto no. 1 in G
- 10:00 a.m. Liszt: *Les Préludes*
- 11:00 a.m. Dvořák: Piano Concerto in G Minor
- 12:00 p.m. Bizet: *Carmen Suite* no. 1
- 1:00 p.m. Metropolitan Opera
- 4:00 p.m. Alfvén: Swedish Rhapsody no. 1 (*Midsummer Vigil*)
- 5:00 p.m. Beethoven: Symphony no. 1 in C

## 2 Sunday

- 7:00 a.m. A. Scarlatti: "Exsultate Deo"
- 9:00 a.m. Bach: Cantata 108 (*Es ist Euch Gut, Dass ich Hingehe*)
- 10:00 a.m. Rheinberger: Requiem in E-flat
- 12:00 p.m. Borodin: Symphony no. 2 in B Minor
- 1:00 p.m. A. Scarlatti: Sinfonia no. 5 in D Minor
- 2:00 p.m. Mozart: Piano Concerto no. 17 in G
- 3:00 p.m. Lumbye: "Dream Pictures"
- 4:00 p.m. Tchaikovsky: Symphony no. 5 in E Minor
- 5:00 p.m. Copland: *Billy the Kid* Ballet Suite

## 3 Monday

- 9:00 a.m. Telemann: *Whimsical* Symphony
- 10:00 a.m. Dvořák: Violin Concerto in A Minor
- 12:00 p.m. Handel: Largo from *Xerxes*
- 2:00 p.m. Weber: Grand Duo Concertante for Clarinet and Piano
- 3:00 p.m. Beethoven: Symphony no. 4 in B-flat
- 6:00 p.m. Bach: Toccata and Fugue in D Minor
- 7:00 p.m. My Life in Music

WCPE derives its income from listener donations and grants from foundations and businesses. Donate by going to [TheClassicalStation.org](http://TheClassicalStation.org) or calling 800.556.5178.

# program listings (may)

- 8:00 p.m. | Gershwin: *An American In Paris*  
 9:00 p.m. | Rimsky-Korsakov: *Capriccio Espagnol*  
 10:00 p.m. | Tárrega: "Capricho Arabe"

## 4 Tuesday

- 9:00 a.m. | Bizet: *L'Arlésienne* Suite no. 2  
 10:00 a.m. | Glazunov: Three Dances from *Ballet Scenes*  
 12:00 p.m. | Chopin: Polonaise in A-flat (*Heroic*)  
 2:00 p.m. | Mozart: Clarinet Concerto in A  
 3:00 p.m. | Tchaikovsky: *Variations on a Rocooco Theme*  
 5:00 p.m. | Reznicek: Overture to *Donna Diana*  
 7:00 p.m. | Rimsky-Korsakov: Suite from *The Tale of Tsar Saltan*  
 8:00 p.m. | Brahms: Piano Quartet in G Minor  
 9:00 p.m. | Mendelssohn: Symphony no. 3 in A Minor (*Scottish*)

## 5 Wednesday

- 8:00 a.m. | Márquez: "Danzón" no. 2  
 9:00 a.m. | Mendelssohn: Piano Concerto in A Minor  
 10:00 a.m. | Ponce: *Concierto del Sur*  
 12:00 p.m. | Copland: *El Salón México*  
 2:00 p.m. | Barrios: "La Catedral"  
 3:00 p.m. | Castro: *Five Gentle Waltzes from Worldly Evenings*  
 4:00 p.m. | Moncayo: "Huapango"  
 7:00 p.m. | Chavez: *Sinfonia India*



Donate your used car or other vehicle to WCPE. All donations are tax-deductible. Find out more by calling **877-927-3872.**

- 8:00 p.m. | Liszt: *Fantasy on Hungarian Folk Themes*  
 9:00 p.m. | Respighi: *The Pines of Rome*

## 6 Thursday

- 8:00 a.m. | Bach: "Sheep May Safely Graze"  
 9:00 a.m. | Mozart: Symphony no. 41 in C (*Jupiter*)  
 10:00 a.m. | Lalo: Cello Concerto in D Minor  
 12:00 p.m. | Elgar: "Nimrod" from *Enigma Variations*  
 2:00 p.m. | Vaughan Williams: *English Folk Song Suite*  
 3:00 p.m. | Beethoven: Piano Concerto no. 2 in B-flat  
 5:00 p.m. | Borodin: "In the Steppes of Central Asia"  
 7:00 p.m. | Thursday Night Opera House  
 10:00 p.m. | Pärt: *Spiegel im Spiegel*

## 7 Friday

- 8:00 a.m. | Brahms: *Academic Festival Overture*  
 9:00 a.m. | All-Request Friday  
 11:00 p.m. | Tchaikovsky: "Elégie" from Serenade for Strings in C

## 8 Saturday

- 7:00 a.m. | K. Stamitz: Oboe Quartet in D  
 8:00 a.m. | Gottschalk: "Grand Fantasia Triumfal"  
 9:00 a.m. | Mozart: Piano Sonata no. 17 in B-flat  
 10:00 a.m. | Bach: Partita no. 3 in A Minor  
 11:00 a.m. | Tchaikovsky: Piano Concerto no. 1 in B-flat Minor  
 12:00 p.m. | Chopin: Ballade no. 3 in A-flat  
 1:00 p.m. | Metropolitan Opera  
 5:00 p.m. | Gottschalk: "The Union"

## 9 Sunday

- 7:00 a.m. | Chopin: Barcarolle in F-sharp  
 9:00 a.m. | Bach: Cantata 86 (*Wahrlich, Wahrlich, Ich Sage Euch*)  
 10:00 a.m. | Puccini: *Messa di Gloria*  
 12:00 p.m. | Chopin: Piano Concerto no. 1 in E Minor  
 1:00 p.m. | Schubert: Piano Sonata in A, D. 959  
 2:00 p.m. | Rachmaninoff: Piano Concerto no. 2 in C Minor  
 3:00 p.m. | Brahms: *Four Piano Pieces*, op. 119  
 4:00 p.m. | Mozart: Piano Concerto no. 24 in C Minor  
 5:00 p.m. | My Life in Music

## 10 Monday

- 9:00 a.m. | Leclair: Violin Concerto in F  
 10:00 a.m. | Mozart: Piano Trio in E  
 12:00 p.m. | Telemann: Trumpet Concerto no. 2 in D  
 2:00 p.m. | Mozart: Piano Concerto no. 15 in B-flat  
 3:00 p.m. | Saint-Saëns: *Carnival of the Animals*  
 5:00 p.m. | Elgar: "Coronation March"  
 7:00 p.m. | Renaissance Fare  
 8:00 p.m. | Schubert: Symphony no. 9 in C (*Great*)  
 9:00 p.m. | Bruch: Violin Concerto no. 1 in G Minor  
 10:00 p.m. | Walton: Piano Quartet in D Minor

## 11 Tuesday

- 9:00 a.m. | Still: *Miniatures*  
 10:00 a.m. | Liadov: *Eight Russian Folk Songs*  
 12:00 p.m. | Bach: Air from Orchestral Suite no. 3 in D ("Air on the G String")  
 2:00 p.m. | Weber: "Invitation to the Dance"  
 3:00 p.m. | Beethoven: Piano Trio in B-flat (*Archduke*)  
 7:00 p.m. | Liadov: "Kikimora"  
 8:00 p.m. | Still: Symphony no. 1 (*Afro-American*)  
 9:00 p.m. | Beethoven: Symphony no. 7 in A

## 12 Wednesday

- 9:00 a.m. | Massenet: *Alsatian Scenes*  
 10:00 a.m. | Fauré: Suite from *Pelléas et Mélisande*  
 12:00 p.m. | Massenet: "The Last Sleep of the Virgin"  
 2:00 p.m. | Fauré: Fantasy in G for Piano and Orchestra  
 3:00 p.m. | Haydn: Symphony no. 96 in D (*Miracle*)  
 7:00 p.m. | Fauré: *Dolly Suite*  
 8:00 p.m. | Massenet: *Le Carillon*  
 9:00 p.m. | Brahms: Symphony no. 3 in F

## 13 Thursday

- 8:00 a.m. | Sullivan: Overture to *The Mikado*  
 9:00 a.m. | Mozart: Bassoon Concerto in B-flat  
 10:00 a.m. | Liszt: Piano Concerto no. 1 in E-flat (*Triangle*)  
 12:00 p.m. | Handel: "See, the Conquering Hero Comes" from *Judas Maccabaeus*  
 2:00 p.m. | Sullivan: Cello Concerto in D  
 3:00 p.m. | Dvořák: Symphony no. 8 in G  
 5:00 p.m. | Sullivan: Overture to *The Pirates of Penzance*

# program listings (may)



*Pascal Rogé*  
*b. 1951 (70th birthday)*

- 7:00 p.m. | Thursday Night Opera House  
 10:00 p.m. | Debussy: Sonata for Flute, Viola, and Harp

## 14 Friday

- 8:00 a.m. | Beethoven: *Leonore* Overture no. 1  
 9:00 a.m. | All-Request Friday  
 10:00 p.m. | Schumann: Fantasy in C

## 15 Saturday

- 7:00 a.m. | Balfé: Overture to *The Bohemian Girl*  
 8:00 a.m. | Sousa: "The Invincible Eagle"  
 9:00 a.m. | Monteverdi: "Pur Ti Miro" from *The Coronation of Poppea*  
 10:00 a.m. | Larsson: *Pastoral Suite*  
 11:00 a.m. | Bruch: *Scottish Fantasy* for Violin and Orchestra  
 12:00 p.m. | Sousa: "The Stars and Stripes Forever"  
 1:00 p.m. | Metropolitan Opera

## 16 Sunday

- 7:00 a.m. | Bruckner: "Ave Maria"  
 9:00 a.m. | Bach: Cantata 183 (*Sie Werden Euch in den Bann Tun*)  
 10:00 a.m. | K. Jenkins: *Te Deum*  
 12:00 p.m. | Schumann: Piano Concerto in A Minor  
 1:00 p.m. | Tchaikovsky: Suite from *Sleeping Beauty*  
 2:00 p.m. | Mozart: Symphony no. 31 in D (*Paris*)  
 3:00 p.m. | Weber: Overture to *Der Freischütz*  
 4:00 p.m. | Copland: *Red Pony Suite*  
 5:00 p.m. | Renaissance Fare

# program listings (may)

## 17 Monday

9:00 a.m.	Mozart: Horn Concerto no. 3 in E-flat
10:00 a.m.	Debussy: <i>Suite Bergamasque</i>
12:00 p.m.	Satie: <i>Gymnopédie</i> no. 1
2:00 p.m.	Mozart: Piano Concerto no. 19 in F
3:00 p.m.	Vaughan Williams: <i>The Lark Ascending</i>
5:00 p.m.	Mozart: Horn Concerto no. 1 in D
8:00 p.m.	Tchaikovsky: <i>Capriccio Italien</i>
9:00 p.m.	Suk: Serenade for Strings in E-flat

## 18 Tuesday

9:00 a.m.	Beethoven: Piano Concerto no. 4 in G
10:00 a.m.	Goldmark: Violin Concerto in A Minor
12:00 p.m.	Smetana: <i>The Moldau</i>
2:00 p.m.	Bach: Brandenburg Concerto no. 1 in F
3:00 p.m.	Haydn: String Quartet in C ( <i>Emperor</i> )
7:00 p.m.	Schubert: Impromptu in A-flat, D. 935, no. 2
8:00 p.m.	Goldmark: <i>Rustic Wedding Symphony</i>
9:00 p.m.	Mendelssohn: Symphony no. 4 in A ( <i>Italian</i> )

## 19 Wednesday

9:00 a.m.	Beethoven: Symphony no. 5 in C Minor
10:00 a.m.	Franck: <i>Symphonic Variations</i>
12:00 p.m.	Corigliano: "Lullaby for Natalie"
2:00 p.m.	Schumann: Symphony no. 1 in B-flat ( <i>Spring</i> )
3:00 p.m.	Telemann: Concerto in E-flat for Two Horns
7:00 p.m.	Liszt: <i>Hungarian Rhapsody</i> no. 6 in D
8:00 p.m.	Tchaikovsky: Violin Concerto in D
9:00 p.m.	Beethoven: Piano Concerto no. 1 in C

## 20 Thursday

8:00 a.m.	Wagner: <i>Ride of the Valkyries</i> from <i>Die Walküre</i>
9:00 a.m.	Schubert: Symphony no. 8 in B Minor ( <i>Unfinished</i> )
10:00 a.m.	Haydn: Symphony no. 92 in G ( <i>Oxford</i> )
12:00 p.m.	Strauss II: "Emperor Waltz"
2:00 p.m.	Mozart: Violin Sonata in D
3:00 p.m.	Price: Symphony no. 4 in D Minor
5:00 p.m.	Mozart: Overture to <i>The Marriage of Figaro</i>
7:00 p.m.	Thursday Night Opera House
10:00 p.m.	Debussy: "Rêverie"

## 21 Friday

8:00 a.m.	Albinoni: Trumpet Concerto in B-flat
9:00 a.m.	All-Request Friday
10:00 p.m.	Handel: Trio Sonata in F

## 22 Saturday

8:00 a.m.	Holst: Second Suite in F
9:00 a.m.	Haydn: Cello Concerto no. 1 in C
10:00 a.m.	Offenbach: Overture to <i>Orpheus in the Underworld</i>
11:00 a.m.	Balakirev: <i>Chopin Suite</i>
12:00 p.m.	Wagner: Prelude to Act 1 of <i>Die Meistersinger von Nürnberg</i>
1:00 p.m.	Metropolitan Opera
5:00 p.m.	Wagner: <i>Siegfried Idyll</i>

## 23 Sunday

7:00 a.m.	Mozart: "Ave Verum Corpus"
9:00 a.m.	Bach: Cantata 59 ( <i>Wer mich Liebet</i> )
10:00 a.m.	M. Charpentier: <i>Te Deum</i> , H.147
12:00 p.m.	Schumann: <i>Humoreske</i>
1:00 p.m.	Bach: Orchestral Suite no. 4 in D
2:00 p.m.	Beethoven: Triple Concerto in C
3:00 p.m.	Smetana: Three Dances from <i>The Bartered Bride</i>
4:00 p.m.	Mozart: Piano Concerto no. 23 in A
5:00 p.m.	Grieg: <i>Holberg Suite</i>

## 24 Monday

8:00 a.m.	Gounod: "Funeral March of a Marionette"
9:00 a.m.	Mozart: Flute Concerto no. 2 in D
10:00 a.m.	Beethoven: Symphony no. 3 in E-flat ( <i>Eroica</i> )
12:00 p.m.	Bach: "Jesu, Joy of Man's Desiring"
2:00 p.m.	Brahms: Piano Concerto no. 1 in D Minor
3:00 p.m.	Chabrier: <i>Pastoral Suite</i>
7:00 p.m.	Haydn: Symphony no. 88 in G
8:00 p.m.	R. Strauss: Suite from <i>Der Rosenkavalier</i>
9:00 p.m.	Franck: Symphony in D Minor

## 25 Tuesday

9:00 a.m.	Dvořák: <i>Slavonic Dances</i> , op. 46
10:00 a.m.	Rodrigo: <i>Concierto de Aranjuez</i>
12:00 p.m.	Debussy: Dances Sacred and Profane for Harp and Orchestra

2:00 p.m.	Beethoven: Violin Sonata no. 5 in F ( <i>Spring</i> )
3:00 p.m.	Brahms: Symphony no. 4 in E Minor
7:00 p.m.	Weber: Overture to <i>Oberon</i>
8:00 p.m.	Lalo: <i>Symphonie Espagnole</i>
9:00 p.m.	Beethoven: Piano Sonata no. 23 in F Minor ( <i>Appassionata</i> )

## 26 Wednesday

9:00 a.m.	Chopin: Piano Sonata no. 2 in B-flat Minor
10:00 a.m.	Brahms: Serenade no. 1 in D
12:00 p.m.	Dvořák: Romance in F Minor
2:00 p.m.	Beethoven: Quintet in E-flat for Piano and Winds
3:00 p.m.	Bizet: Symphony in C
7:00 p.m.	Beethoven: <i>Leonore</i> Overture no. 3
8:00 p.m.	Ravel: <i>Noble and Sentimental Waltzes</i>
9:00 p.m.	Rimsky-Korsakov: <i>Scheherazade</i>

## 27 Thursday

9:00 a.m.	Mozart: Piano Concerto no. 21 in C
10:00 a.m.	Raff: <i>Italian Suite</i>
12:00 p.m.	Ravel: "Alborada del Gracioso"
1:00 p.m.	Pachelbel: Canon and Gigue in D
2:00 p.m.	Haydn: Symphony no. 85 in B-flat ( <i>The Queen</i> )
3:00 p.m.	Mendelssohn: Violin Concerto in E Minor
5:00 p.m.	Grieg: "Anitra's Dance" from <i>Peer Gynt</i> Suite no. 1
7:00 p.m.	Thursday Night Opera House
10:00 p.m.	Tchaikovsky: <i>Melancholy Serenade</i>

## 28 Friday

8:00 a.m.	Sousa: "El Capitan"
9:00 a.m.	All-Request Friday
10:00 p.m.	Schubert: "The Miller and the Stream"

## 29 Saturday

8:00 a.m.	Dvořák: String Quartet no. 12 in F ( <i>American</i> )
9:00 a.m.	Copland: <i>Rodeo</i>
10:00 a.m.	Still: Symphony no. 1 ( <i>Afro-American</i> )
11:00 a.m.	Chadwick: <i>Symphonic Sketches</i>
12:00 p.m.	Gershwin: <i>An American in Paris</i>
1:00 p.m.	Metropolitan Opera
4:00 p.m.	Nelson: "Sonoran Desert Holiday"

# program listings (may)

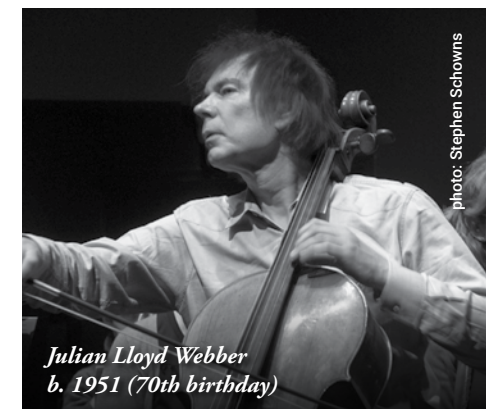
5:00 p.m.	Price: "Fantasie Negre"
-----------	-------------------------

## 30 Sunday

7:00 a.m.	M. Keller: "Hymn of Peace"
9:00 a.m.	Bach: Cantata 165 ( <i>O Heiliges Geist- und Wasserbad</i> )
10:00 a.m.	Scarlatti, A.: <i>Il Martirio di Santa Teodosia</i>
12:00 p.m.	Dvořák: <i>American Suite</i>
1:00 p.m.	Copland: <i>Music for Movies</i>
2:00 p.m.	Bernstein, arr. Penaforte: <i>West Side Story Suite</i> for Piano Trio
3:00 p.m.	Gershwin: Concerto in F
4:00 p.m.	Williams: Theme from <i>The Patriot</i>
5:00 p.m.	O'Connor: <i>Fanfare for the Volunteer</i>

## 31 Monday

8:00 a.m.	Sousa: "The Stars and Stripes Forever"
9:00 a.m.	Gershwin: <i>Rhapsody in Blue</i>
10:00 a.m.	Paine: Symphony no. 2 in A ( <i>In the Spring</i> )
11:00 a.m.	Williams: "Summon the Heroes"
12:00 p.m.	Sousa: "The Liberty Bell"
1:00 p.m.	Hanson: Symphony no. 2, op. 30 ( <i>Romantic</i> )
2:00 p.m.	Copland: <i>Appalachian Spring</i>
3:00 p.m.	"Taps"
5:00 p.m.	Copland: "Fanfare for the Common Man"
6:00 p.m.	Williams: "Hymn to the Fallen" from <i>Saving Private Ryan</i>
7:00 p.m.	Bagley: "National Emblem March"
8:00 p.m.	Dvořák: Symphony no. 9 in E Minor ( <i>From the New World</i> )
9:00 p.m.	Barber: Piano Concerto
10:00 p.m.	Paulus: "Hymn for America"



Julian Lloyd Webber  
b. 1951 (70th birthday)

photo: Stephen Schowins

## *The Way of Bach: Three Years with the Man, the Music, and the Piano*

By Dan Moller

Pegasus Books, 197 pages

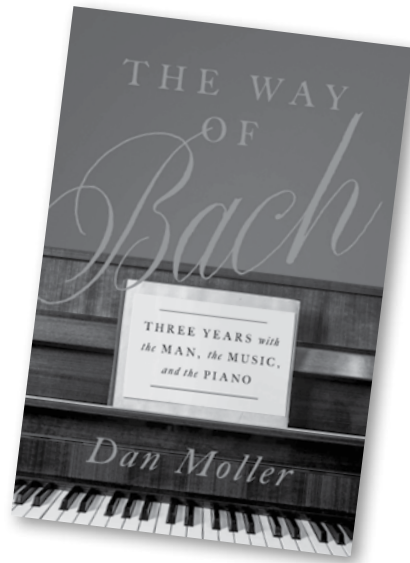
A review by R.C. Speck

Will our fascination with Johann Sebastian Bach ever cease? After reading *The Way of Bach* by Dan Moller, the answer would have to be an emphatic “no.”

Moller, a philosophy professor at the University of Maryland, took it upon himself to learn some of the more profound Bach keyboard works despite not being a musician. These include *The Well-Tempered Clavier*, *The Goldberg Variations*, and *The Art of Fugue*. Moller deconstructs each of these works, stripping them to their emotional character as well as their technical substance. Moller offers a unique—and entertainingly critical—perspective on classical music and on Bach in particular.

For example, Moller waxes on about how Bach was a great assimilator who incorporated French pomp, Italian opera, and Renaissance tradition with his Lutheran particularism. According to Moller, the leading lights of Bach's day—namely, Georg Philipp Telemann and Jean-Baptiste Lully—were mediocrities. Even greats such as Handel and Vivaldi were bound by tradition in comparison to Bach. Moller writes how Americans, with their lack of perspective, tend to ascribe this to genius, while Europeans will view Bach as the one who simply perfected the musical traditions of his time. Palestrina and Debussy seem to be among the few who compare favorably to Bach in Moller's estimation.

Disagree? That's okay, because Moller's teacher Christopher does as well. Christopher may have dropped out of conservatory and wrap fish for a living, but he has forgotten more about being a musician than Moller will ever know. Moller describes—sometimes triumphantly,



sometimes bitterly—their disagreements on both technical and aesthetic matters concerning Bach. Christopher may have experience and musical intuition, but Moller has read nearly every Bach biography ever written, including Philipp Spitta's thousand-page opus from 1873. How can one argue Bach with a person who knows so much about the man? Teacher and student's Bach vs. Mozart debate sparkles as well. Do you prefer laborious fugues or vapid serenades?

Moller does not lack audacity, and, having a background in philosophy, he is perfectly capable of defending whatever point he cares to make (although one would like him to expand upon his opinion that Beethoven was a “pompous nose-blower”). But *The Way of Bach* is equal parts humility. Moller often finds himself at the limits of his abilities and hurling existential conundrums into the abyss. He freely admits that there is much about Bach, about music, about life that he doesn't understand.

But what he does understand is his fascination. At the end of his three years studying Bach, it's still there, and will likely never go away. ♪

By Dan McHugh

The Classical Station is dedicated not only to broadcasting classical music around the world, but also to supporting young people in our community as they learn about and perform classical music. Nonprofits that focus on music lessons are encouraged to apply for a grant from our Education Fund. The application deadline is March 30, 2021.

The Education Fund has grown to include an instrument donation program. We are collecting mint-condition instruments (strings are the most in-demand) to redistribute to music organizations such as the Wake Forest Community Youth Orchestra and Musical Empowerment. If you have an instrument you would like to donate, please get in touch by e-mailing me at Dan@TheClassicalStation.org.

The Wake Forest Community Youth Orchestra received a grant in 2020 to support their elementary school beginning strings program. LaSaundra Booth, executive director and founder, said, “Opportunities such as the master class with composer

Enoch Robinson and virtual recordings would not have been possible without the support of the WCPE Education Fund. WCPE also blessed us with many instruments this season. In years past we ran out of instruments, but thanks to you and the WCPE Education Fund, every child received their first choice of instrument, and students who needed a bigger-size instrument were able to receive the next size up. We cannot say ‘thank you’ enough. We truly appreciate your support.”

Since its founding in 2010, the WCPE Education Fund has awarded over \$90,000 in grants to music education nonprofits in central North Carolina. This year, we hope to surpass the \$100,000 mark. We can do that only with your help! Please allocate 10% of your donation to The Classical Station to our Education Fund. You can help provide students the chance to learn a new instrument, participate in an afterschool program, and so much more. Thank you for your support! For more information, please visit online at [TheClassicalStation.org/Membership/Education-Fund](http://TheClassicalStation.org/Membership/Education-Fund). ♪



Wake Forest Community Youth Orchestra

Help The Classical Station get the Membership Drive off to a great start by encouraging others to match your donation of \$300 or more. For more information, please call Member Services at 919-556-5178.





WCPE salutes its business partners! These public-spirited companies, organizations, and individuals have joined the friends of WCPE in supporting Great Classical Music.

## American Guild of Organists Central NC Chapter

P.O. Box 2512  
Raleigh, NC 27602  
cnccago.org

## Carolina Ballet

3401-131 Atlantic Ave.  
Raleigh, NC 27604  
919-719-0800  
carolinaballet.com

## Carolina Performing Arts

*Fulfilling UNC-Chapel Hill's  
commitment to the arts since 2005*  
Box office: 919-843-3333  
carolinaperformingarts.org

## Cary Skin Center

*Offering comprehensive services  
through its Skin Cancer Center and  
Aesthetic Surgery and Laser Center*  
At the corner of NC 55 and  
High House Rd.  
Cary, NC 27519  
919-363-7546  
caryskincenter.com

## Chamber Music of Raleigh

P.O. Box 2059  
Raleigh, NC 27602  
chambermusicraleigh.org

## Chamber Orchestra of the Triangle

309 W. Morgan St.  
Durham, NC 27701  
chamberorchestraofthetriangle.org

## Chamblee Graphics

*Printer of WCPE's Quarter Notes*  
1300 Hodges St.  
Raleigh, NC 27604  
919-833-7561

## Choral Society of Durham

120 Morris St.  
Durham, NC 27701  
919-560-2733  
choral-society.org

## Christ Episcopal Church Concert Series

102 Edenton St.  
Raleigh, NC 27601

## Daniel Lee Buffinga Grandfather Clock Repair

919-345-4488

## Duke Health

919-373-3515  
dukehealth.org

## Duke Performances

2010 Campus Dr., Box 90757  
Durham, NC 27708  
919-660-3356  
dukeperformances.duke.edu

## Duke University, Chapel Music

P.O. 90883  
Durham, NC 27708  
919-684-3855  
chapel.duke.edu/music.html

## Duke University, Dept. of Music

Box 90665  
Durham, NC 27708  
919-660-3300  
music.duke.edu

## Durham Medical Orchestra

dmomusic.org

## Durham Savoyards

120 Morris St.  
Durham NC 27701  
durhamsavoyards.org

## Eastern Music Festival

200 N. Davie Street Suite 11  
Greensboro, NC 27401  
336-333-7450  
easternmusicfestival.org

## Greensboro Symphony

200 N. Davie St., Suite 301  
Greensboro, NC 27401  
336-335-5456  
greensborosymphony.org

## Halle Cultural Arts Center of Apex

P.O. Box 250  
237 N. Salem St.  
Apex, NC 27502  
919-249-1120  
thehalle.org

## Hamilton Hill Jewelry

905 W. Main St.  
Durham, NC 27701  
919-683-1474  
hamiltonhilljewelry.com

## Tom Keith & Associates, Inc.

*Serving the Carolinas for over 46  
years in the valuation of corporations,  
partnerships, professional practices,  
and sole proprietorships*  
121 S. Cool Spring St.  
Fayetteville, NC 28301  
910-323-3222  
keithvaluation.com

## The Musician's Notebook

themusiciansnotebook.com

## North Carolina Museum of Art

2110 Blue Ridge Rd.  
Raleigh, NC 27607  
919-839-6262  
ncartmuseum.org

## North Carolina Opera

612 Wade Ave. Suite 100  
Raleigh, NC 27605  
919-792-3850  
ncopera.org

## North Carolina Symphony

3700 Glenwood Ave. Suite 130  
Raleigh, NC 27612  
919-733-2750  
ncsymphony.org

## Paderewski Festival of Raleigh

*Dr. Alvin M. Fountain of  
Raleigh, organizer*  
103 Birkhaven Dr.  
Cary, NC 27518-8942

## Raleigh Community Orchestra

6339 Glenwood Ave.  
Raleigh, NC 27612  
919-807-1487  
raleighcommunityorchestra.org

## Raleigh Symphony Orchestra

2424 Wycliff Rd. Suite 102A  
Raleigh, NC 27607  
919-546-9755  
raleighsymphony.org

## Red Oak Brewery

6901 Konica Dr.  
Whitsett, NC 27377  
redoakbrewery.com

## Keith Robertson

9121 Anson Way Suite 200  
Raleigh, NC 27615  
919-258-2984  
keithrobertson-ea.com

## Triangle Brass Band

P.O. Box 14344  
Research Triangle Park, NC 27709  
trianglebrass.org

## Triangle Wind Ensemble

P.O. Box 701  
Cary, NC 27512  
919-960-1893  
trianglewind.org

## Vocal Arts Ensemble of Durham

Box 90665  
Duke University  
Durham, NC 27708  
919-660-3302  
vocalartsensemble.org

## Volunteers of America

207 Commons Blvd.  
Durham, NC 27704  
919-794-4300  
voa.org

## Vox Virorum Men's Chorus

Durham, NC  
voxvirorum.org

## Wake Radiology

*Over 60 years of comprehensive  
radiology care and advanced imaging  
for your family*  
3949 Browning Pl.  
Raleigh, NC 27609  
919-232-4700  
wakerad.com

## Women's Voices Chorus

P. O. Box 2854  
Chapel Hill, NC 27515  
womensvoiceschorus.org



## Classical Events\* and Promotional Partners

### 27587 Magazine

27587magazine.com

### Carolina Ballet

carolinaballet.com

### Chamber Music Raleigh

chambermusicraleigh.org

### Chamber Orchestra of the Triangle

chamberorchestraofthetriangle.org

### Duke Chapel Music

chapel.duke.edu

### Louisburg College

louisburg.edu

### Mallarmé Chamber Players

mallarmemusic.org

### \*North Carolina Opera

ncopera.org

### \*North Carolina Symphony

ncsymphony.org

### \*Quail Ridge Bookstore

quailridgebooks.com

### \*Wake Forest Chamber of Commerce

wakeforestchamber.org

### Wake Forest Garden Club

wfgardenclub.org

### Women's Voice Chorus

womensvoicechorus.org

For information on becoming a business partner, contact  
[development@theclassicalstation.org](mailto:development@theclassicalstation.org).

## What You're Saying



I love the quote attributed to Pepe Romero: "Music makes us communicate through our soul, and if you can leave the theatre feeling that connection, that's what I want more than anything." By that standard, WCPE hits it out of the proverbial ballpark every day! Thank you...to the all-star team at WCPE that regularly "rounds the bases and scores" the gratitude of listeners every day and makes it look effortless, too. *(Scott on Facebook)*

I just started receiving *Quarter Notes*. Just wanted to say that I think you are putting out a very classy magazine. It is so tastefully done, and just plain fun to read through. Thanks for your efforts. *(Robert)*

I enjoy the music so much. It helps bring peace in a time when we need all the peace we can bring into our lives. Also, no commercials, and not a barrage of COVID19 news. Thanks again, and I pray that the goals for operating funds are reached, and then some. *(Thomas in Raleigh)*

Today has been a particularity of an especially stellar day of musical enjoyment (listening to my favorite Berlioz piece at present) and I could not be more grateful! Simply sublime. Thank you all! *(Diana on Facebook)*

## MEMBERSHIP CORNER

It's hard to believe a year has gone by. During last spring's Membership Drive, the world slowly ground to a halt. Everything changed and nobody was quite sure what to do. We continued with our fundraiser as planned as we spaced out, masked up, and stayed home. Despite everything that has changed over the last year, classical music has been there for us.

One of the silver linings of this past year has been hearing from so many of our listeners. As we listened together, Beethoven and Tchaikovsky kept us company. Hearing a sonata by Mozart seemed to brighten so many days.

Everything we do here at The Classical Station is made possible thanks to listener contributions. As a nonprofit, we rely on members like you to help us keep the music playing. We are proud to continue our mission of broadcasting Great Classical Music on the radio and around the world online. Please continue to help WCPE by making a contribution today.

Classical music will always have a home here on The Classical Station. We appreciate all of your support and for listening. Thanks for being a member of WCPE!—Dan McHugh, Membership Director

**Were you a first-time donor in the spring of 2020?** Don't forget to renew your donation in 2021! Or, why not become a sustainer and have the same amount automatically debited every month?

WCPE in Raleigh, NC, is licensed by the Federal Communications Commission to broadcast on 89.7MHz with 100,000 watts.

WCPE is the flagship of The Classical Station (TCS). TCS's programming is carried on the following FM channels in North Carolina and Virginia:

- W202BQ on 88.3 MHz (Aberdeen, Pinehurst, Southern Pines)
- W205CA on 88.9 MHz (Foxfire Village)
- W210BS on 89.9 MHz (New Bern)
- WZPE on 90.1 MHz (Bath)
- WURI on 90.9 MHz (Manteo)
- W216BE on 91.1 MHz (Buxton)
- W237CM on 95.3 MHz (Fayetteville)
- W247BG on 97.3 MHz (Greenville)
- W275AW on 102.9 MHz (Danville, VA)
- W292DF on 106.3 MHz (Martinsville, VA)

TCS's programming is carried on partner stations across America listed at: <https://theclassicalstation.org/listen/partner-stations/>.

TCS's programming is carried on cable systems across America.

TCS streams on the Internet in Windows Media, aac, MP3, and Ogg Vorbis at: <https://theclassicalstation.org/listen/>.

TCS streams on the Internet to IOS and Android smartphone apps.

TCS grants blanket permission to retransmit and rebroadcast its programming in real time without charge or obligation to WCPE, to any entity and/or anyone who may legally disseminate programming to the general public. This permission includes AM, FM, and television stations and translators; cable TV systems; closed-circuit TV systems; common carriers; direct-broadcast satellite systems; Internet service providers and audio services; multipoint distribution systems; pay-TV systems; subscription TV systems; satellite master antenna TV systems; and similar licensed or authorized entities.

It is a violation of law to record copyrighted music or performances without authorization; please use TCS's programs and services properly.

## Let Me Help!

Fill out this form and send it to WCPE.  
Thank you for your support!

name \_\_\_\_\_  
address \_\_\_\_\_  
city \_\_\_\_\_  
state \_\_\_\_\_ zip \_\_\_\_\_  
telephone \_\_\_\_\_

### Yes! I want to support WCPE with a:

single donation or  monthly donation of:

\$10  \$25  \$50  \$100

\$250  \$500  Other \$\_\_\_\_\_

I would like to use my gift of \$300 or more as an Angel Challenge.

Please use:

My full name  My first name & city

I would like to be contacted about leaving WCPE in my estate plans.

My check is enclosed, or

Please charge to my:

Visa  MasterCard

AmEx  Discover

card number \_\_\_\_\_

print your name as it appears on your card \_\_\_\_\_

expiration date \_\_\_\_\_

signature \_\_\_\_\_

I want to be a WCPE volunteer.

My matching gift employer is: \_\_\_\_\_

Please mail to:

WCPE  
PO Box 828  
Wake Forest, NC 27588

WCPE

P.O. Box 828

Wake Forest, NC 27588

ELECTRONIC SERVICE REQUESTED

Dated material—do not delay

**PLEASE NOTE:**

Don't forget to renew your WCPE membership before the date shown below.

Non-Profit Org.  
US Postage  
PAID  
Permit No. 1348  
Raleigh, NC

## Want to listen to Classical music on your smart phone?

The free WCPE Radio app plays nothing but Great Classical Music, 24 hours a day. You can hear the music you love on The Classical Station everywhere you go!

photo: cottonbro

89.7



WCPE

GreatClassicalMusic, 24HoursADay